



## Series 200

The series 200 consist of a broad range of valves with various type of actuation.  
The connections for this series are from G 1/8" to G 1".  
Due to their special construction with a balanced spool, these valves can be used interchangeably as 3 ways or 5 ways.  
The 3 ways can be used normally closed or normally open and the 5 ways can be fed through the exhausts 3 and 5 with different pressures according to the need.  
The spool, as it is moving, isolates the connections without being affected by the inlet pressure.

### Construction characteristics

|           | G 1/8" - G 1/4" - G 1/2" - G 1"  |
|-----------|--|
| Body      | Aluminium  |
| Spacers   | Technopolymer<br>Aluminium for G1" (211)   |
| Seals     | NBR<br>PUR for 212/2   |
| Springs   | Spring steel   |
| Operators | Aluminium<br>Technopolymer   |
| Pistons   | Technopolymer, for 228 pneumatic command valves Aluminium,<br>for 224, 212, 212/2 and 211 pneumatic command valves |
| Spools    | Steel<br>Aluminium, for 212/2  |

### Use and maintenance

This valves have an average life of 15 million cycles depending on the application and air quality.  
Filtered and lubricated air using specified lubricants will reduce the wear of the seals and ensures long and trouble free operation.  
Please ensure that the valve is being used according with the manufacturers specification, such as air pressure and temperature.  
The exhaust port of the distributor has to be protected in a dusty and dirty environment.  
Repair kits including the spool complete with seals are available for overhauling the valves.  
However, although this is a simple operation it should be carried out by a competent person.

**ATTENTION:** use hydraulic oil class H for lubrication such as CASTROL MAGNA SW32.



AIR DISTRIBUTION

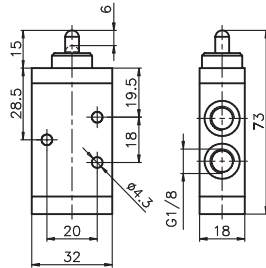
**Tappet - Spring**

Coding: 228.1.0.1

| Operational characteristics           |  |
|---------------------------------------|--|
| Fluid                                 | Filtered air. No lubrication needed, if applied it shall be continuous |
| Max. working pressure (bar)           | 10   |
| Temperature °C                        | -5 ... +70   |
| Flow rate at 6 bar with Δp=1 (NI/min) | 540  |
| Orifice size (mm)                     | 6  |
| Working ports size                    | G1/8"  |

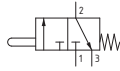
| TYPE |                          |
|------|--------------------------|
| 1    | 32 = 3 ways, 2 positions |
|      | 52 = 5 ways, 2 positions |

3/2 ways

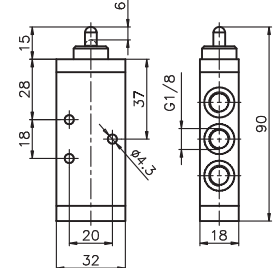


Weight 85 g  
Operating force 33 N

228.32.0.1

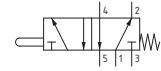


5/2 ways



Weight 105 g  
Operating force 33 N

228.52.0.1



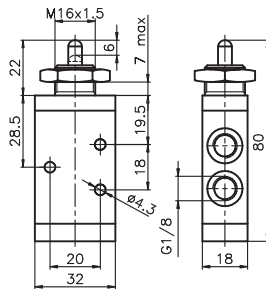
**Tappet panel - Spring**

Coding: 228.1.1.1

| Operational characteristics           |  |
|---------------------------------------|--|
| Fluid                                 | Filtered air. No lubrication needed, if applied it shall be continuous |
| Max. working pressure (bar)           | 10   |
| Temperature °C                        | -5 ... +70   |
| Flow rate at 6 bar with Δp=1 (NI/min) | 540  |
| Orifice size (mm)                     | 6  |
| Working ports size                    | G1/8"  |

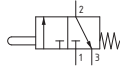
| TYPE |                          |
|------|--------------------------|
| 1    | 32 = 3 ways, 2 positions |
|      | 52 = 5 ways, 2 positions |

3/2 ways

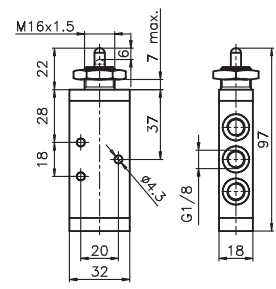


Weight 102 g  
Operating force 33 N

228.32.1.1

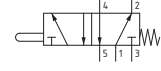


5/2 ways



Weight 122 g  
Operating force 33 N

228.52.1.1



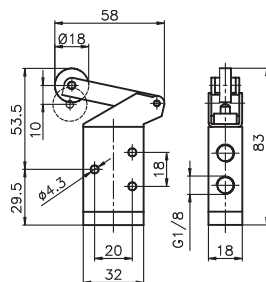
**Lever roller-Spring**

Coding: 228.1.2.V

| Operational characteristics           |  |
|---------------------------------------|--|
| Fluid                                 | Filtered air. No lubrication needed, if applied it shall be continuous |
| Max. working pressure (bar)           | 10   |
| Temperature °C                        | -5 ... +70   |
| Flow rate at 6 bar with Δp=1 (NI/min) | 540  |
| Orifice size (mm)                     | 6  |
| Working ports size                    | G1/8"  |

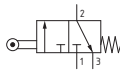
| TYPE    |                          |
|---------|--------------------------|
| 1       | 32 = 3 ways, 2 positions |
|         | 52 = 5 ways, 2 positions |
| VERSION |                          |
| V       | 1 = Plastic roller       |
|         | 1/2 = Metal roller       |

3/2 ways

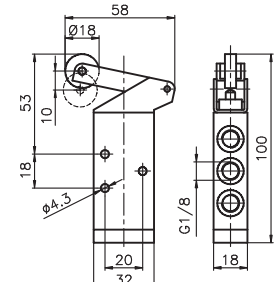


Weight 115 g  
Operating force 15 N

228.32.2.V

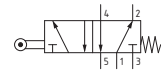


5/2 ways



Weight 135 g  
Operating force 15 N

228.52.2.V

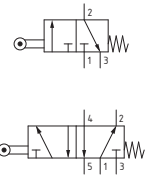


**Lever roller ball bearing - Spring**

Coding: 228.1.2.1/1

| Operational characteristics                   |  |
|---|--|
| Fluid   | Filtered air. No lubrication needed, if applied it shall be continuous |
| Max. working pressure (bar)                   | 10   |
| Temperature °C                                | -5 ... +70   |
| Flow rate at 6 bar with $\Delta p=1$ (NI/min) | 540  |
| Orifice size (mm)                             | 6  |
| Working ports size                            | G1/8"  |

| TYPE |                          |
|------|--------------------------|
| 1    | 32 = 3 ways, 2 positions |
|      | 52 = 5 ways, 2 positions |

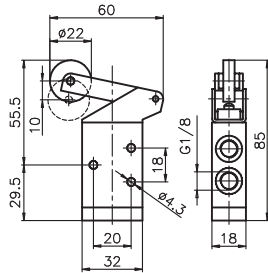


3/2 ways



Weight 130 g  
Operating force 15 N

228.32.2.1/1

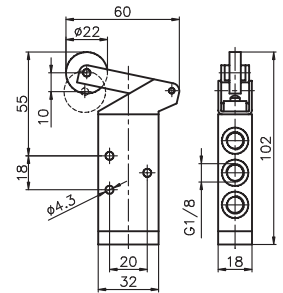


5/2 ways



Weight 150 g  
Operating force 15 N

228.52.2.1/1

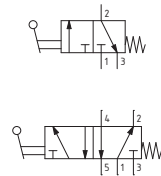


**Lever button - Spring**

Coding: 228.1.2.6/C

| Operational characteristics                   |  |
|---|--|
| Fluid   | Filtered air. No lubrication needed, if applied it shall be continuous |
| Max. working pressure (bar)                   | 10   |
| Temperature °C                                | -5 ... +70   |
| Flow rate at 6 bar with $\Delta p=1$ (NI/min) | 540  |
| Orifice size (mm)                             | 6  |
| Working ports size                            | G1/8"  |

| TYPE         |                          |
|--------------|--------------------------|
| 1            | 32 = 3 ways, 2 positions |
|              | 52 = 5 ways, 2 positions |
| BUTTON COLOR |                          |
| C            | 1 = Red                  |
|              | 2 = Black                |
|              | 3 = Green                |

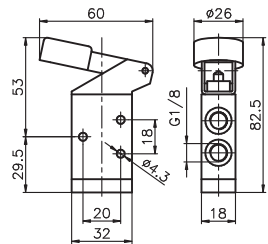


3/2 ways



Weight 120 g  
Operating force 15 N

228.32.2.6/C

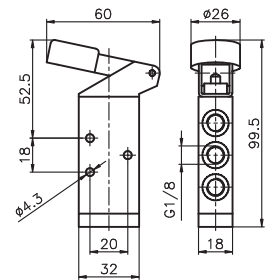


5/2 ways



Weight 120 g  
Operating force 15 N

228.52.2.6/C

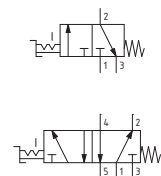


**Switch lateral 2 positions**

Coding: 228.1.27

| Operational characteristics                   |  |
|---|--|
| Fluid   | Filtered air. No lubrication needed, if applied it shall be continuous |
| Max. working pressure (bar)                   | 10   |
| Temperature °C                                | -5 ... +70   |
| Flow rate at 6 bar with $\Delta p=1$ (NI/min) | 540  |
| Orifice size (mm)                             | 6  |
| Working ports size                            | G1/8"  |

| TYPE |                          |
|------|--------------------------|
| 1    | 32 = 3 ways, 2 positions |
|      | 52 = 5 ways, 2 positions |

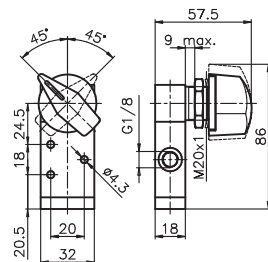


3/2 ways



Weight 190 g

228.32.27

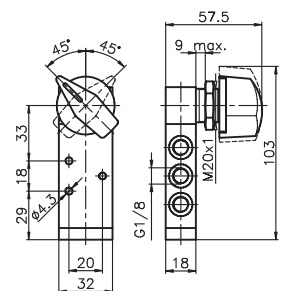


5/2 ways



Weight 210 g

228.52.27

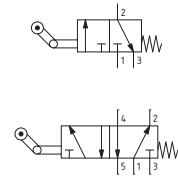


**Lever roller unidirectional - Spring**

Coding: 228. **T**.3. **V**

| Operational characteristics                   |  |
|---|--|
| Fluid   | Filtered air. No lubrication needed, if applied it shall be continuous |
| Max. working pressure (bar)                   | 10   |
| Temperature °C                                | -5 ... +70   |
| Flow rate at 6 bar with $\Delta p=1$ (NI/min) | 540  |
| Orifice size (mm)                             | 6  |
| Working ports size                            | G1/8"  |

| TYPE     |  |
|----------|--|
| <b>T</b> | 32 = 3 ways, 2 positions<br>52 = 5 ways, 2 positions |
| VERSION  |  |
| <b>V</b> | 1 = Plastic roller<br>1/2 = Metal roller             |



1 AIR DISTRIBUTION

3/2 ways

Weight 110 g  
228.32.3. **V**

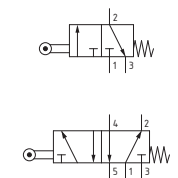
Weight 130 g  
228.52.3. **V**

**Lever roller lateral bidirectional - Spring**

Coding: 228. **T**.4.1

| Operational characteristics                   |  |
|---|--|
| Fluid   | Filtered air. No lubrication needed, if applied it shall be continuous |
| Max. working pressure (bar)                   | 10   |
| Temperature °C                                | -5 ... +70   |
| Flow rate at 6 bar with $\Delta p=1$ (NI/min) | 540  |
| Orifice size (mm)                             | 6  |
| Working ports size                            | G1/8"  |

| TYPE     |  |
|----------|--|
| <b>T</b> | 32 = 3 ways, 2 positions<br>52 = 5 ways, 2 positions |



3/2 ways

Weight 180 g  
228.32.4.1

5/2 ways

Weight 200 g  
228.52.4.1

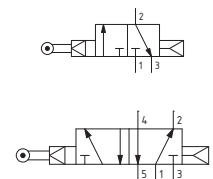
**Lever sensitive - differential**

Coding: 228. **T**.4.13

| Operational characteristics                   |  |
|---|--|
| Fluid   | Filtered air. No lubrication needed, if applied it shall be continuous |
| Max. working pressure (bar)                   | 10   |
| Temperature °C                                | -5 ... +70   |
| Flow rate at 6 bar with $\Delta p=1$ (NI/min) | 540  |
| Orifice size (mm)                             | 6  |
| Working ports size                            | G1/8"  |

| TYPE     |  |
|----------|--|
| <b>T</b> | 32 = 3 ways, 2 positions<br>52 = 5 ways, 2 positions |

Minimum rotation angle 11°



3/2 ways

Weight 200 g  
Minimum working pressure 2,5 bar  
228.32.4.13

5/2 ways

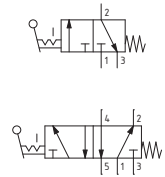
Weight 220 g  
Minimum rotation angle 11°  
Minimum working pressure 2,5 bar  
228.52.4.13

**Lever panel Ø30 - 2 positions**

Coding: 228.1.5/Ⓒ

| Operational characteristics           |  |
|---------------------------------------|--|
| Fluid                                 | Filtered air. No lubrication needed, if applied it shall be continuous |
| Max. working pressure (bar)           | 10   |
| Temperature °C                        | -5 ... +70   |
| Flow rate at 6 bar with Δp=1 (NI/min) | 540  |
| Orifice size (mm)                     | 6  |
| Working ports size                    | G1/8"  |

|             |  |
|-------------|--|
| TYPE        | 32 = 3 ways, 2 positions<br>52 = 5 ways, 2 positions |
| LEVER COLOR | 1 = Red<br>2 = Black<br>3 = Green                    |

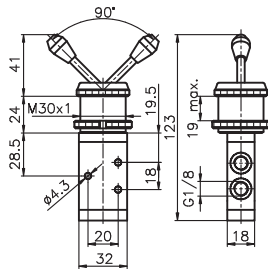


3/2 ways



Weight 198 g

228.32.5/Ⓒ

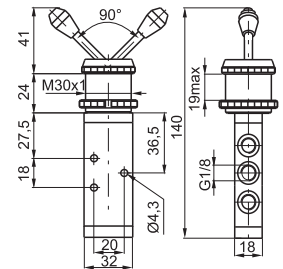


5/2 ways



Weight 218 g

228.52.5/Ⓒ

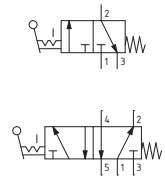


**Frontal lever - 2 positions**

Coding: 228.1.55/Ⓒ

| Operational characteristics           |  |
|---------------------------------------|--|
| Fluid                                 | Filtered air. No lubrication needed, if applied it shall be continuous |
| Max. working pressure (bar)           | 10   |
| Temperature °C                        | -5 ... +70   |
| Flow rate at 6 bar with Δp=1 (NI/min) | 540  |
| Orifice size (mm)                     | 6  |
| Working ports size                    | G1/8"  |

|             |  |
|-------------|--|
| TYPE        | 32 = 3 ways, 2 positions<br>52 = 5 ways, 2 positions |
| LEVER COLOR | 1 = Red<br>2 = Black<br>3 = Green                    |

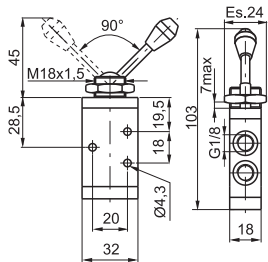


3/2 ways



Weight 115 g

228.32.55/Ⓒ

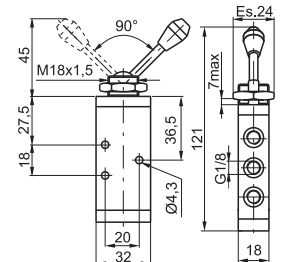


5/2 ways



Weight 135 g

228.52.55/Ⓒ

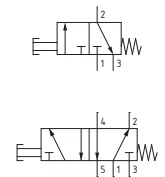


**Push button Ø30 - spring**

Coding: 228.1.6.1/Ⓒ

| Operational characteristics           |  |
|---------------------------------------|--|
| Fluid                                 | Filtered air. No lubrication needed, if applied it shall be continuous |
| Max. working pressure (bar)           | 10   |
| Temperature °C                        | -5 ... +70   |
| Flow rate at 6 bar with Δp=1 (NI/min) | 540  |
| Orifice size (mm)                     | 6  |
| Working ports size                    | G1/8"  |

|              |  |
|--------------|--|
| TYPE         | 32 = 3 ways, 2 positions<br>52 = 5 ways, 2 positions |
| BUTTON COLOR | 1 = Red<br>2 = Black<br>3 = Green                    |

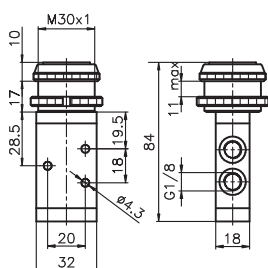


3/2 ways



Weight 155 g  
Operating force 33 N

228.32.6.1/Ⓒ

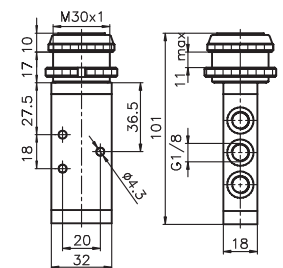


5/2 ways



Weight 175 g  
Operating force 33 N

228.52.6.1/Ⓒ

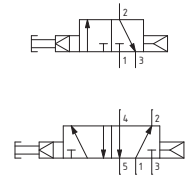


**Sensitive push button Ø30 - differential**

Coding: 228. **T**.6.13/**C**

| Operational characteristics                   |  |
|---|--|
| Fluid   | Filtered air. No lubrication needed, if applied it shall be continuous |
| Max. working pressure (bar)                   | 10   |
| Temperature °C                                | -5 ... +70   |
| Flow rate at 6 bar with $\Delta p=1$ (NI/min) | 540  |
| Orifice size (mm)                             | 6  |
| Working ports size                            | G1/8"  |

|              |  |
|--------------|--|
| TYPE         |  |
| <b>T</b>     | 32 = 3 ways, 2 positions<br>52 = 5 ways, 2 positions |
| BUTTON COLOR |  |
| <b>C</b>     | 1 = Red<br>2 = Black<br>3 = Green                    |



1 AIR DISTRIBUTION

**3/2 ways**

Weight 197 g  
Operating force 18,5 N (at 6 bar)

228.32.6.13/**C**

**5/2 ways**

Weight 217 g  
Operating force 18,5 N (at 6 bar)

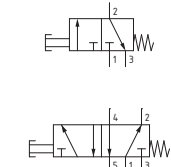
228.52.6.13/**C**

**Push button - Spring**

Coding: 228. **T**.6.22/**C**

| Operational characteristics                   |  |
|---|--|
| Fluid   | Filtered air. No lubrication needed, if applied it shall be continuous |
| Max. working pressure (bar)                   | 10   |
| Temperature °C                                | -5 ... +70   |
| Flow rate at 6 bar with $\Delta p=1$ (NI/min) | 540  |
| Orifice size (mm)                             | 6  |
| Working ports size                            | G1/8"  |

|              |  |
|--------------|--|
| TYPE         |  |
| <b>T</b>     | 32 = 3 ways, 2 positions<br>52 = 5 ways, 2 positions |
| BUTTON COLOR |  |
| <b>C</b>     | 1 = Red<br>2 = Black<br>3 = Green<br>4 = Yellow      |



**3/2 ways**

Weight 225 g  
Operating force 33 N

228.32.6.22/**C**

**5/2 ways**

Weight 245 g  
Operating force 33 N

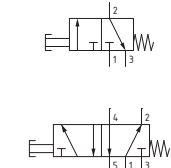
228.52.6.22/**C**

**Raised push button Ø22 - Spring**

Coding: 228. **T**.6.23/**C**

| Operational characteristics                   |  |
|---|--|
| Fluid   | Filtered air. No lubrication needed, if applied it shall be continuous |
| Max. working pressure (bar)                   | 10   |
| Temperature °C                                | -5 ... +70   |
| Flow rate at 6 bar with $\Delta p=1$ (NI/min) | 540  |
| Orifice size (mm)                             | 6  |
| Working ports size                            | G1/8"  |

|              |  |
|--------------|--|
| TYPE         |  |
| <b>T</b>     | 32 = 3 ways, 2 positions<br>52 = 5 ways, 2 positions |
| BUTTON COLOR |  |
| <b>C</b>     | 1 = Red<br>2 = Black<br>3 = Green<br>4 = Yellow      |



**3/2 ways**

Weight 230 g  
Operating force 33 N

228.32.6.23/**C**

**5/2 ways**

Weight 250 g  
Operating force 33 N

228.52.6.23/**C**

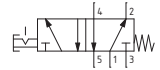
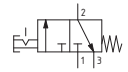
**Push button Ø22 - 2 positions**

Coding: 228.1.6.25

| Operational characteristics           |  |
|---------------------------------------|--|
| Fluid                                 | Filtered air. No lubrication needed, if applied it shall be continuous |
| Max. working pressure (bar)           | 10   |
| Temperature °C                        | -5 ... +70   |
| Flow rate at 6 bar with Δp=1 (NI/min) | 540  |
| Orifice size (mm)                     | 6  |
| Working ports size                    | G1/8"  |

| TYPE |                          |
|------|--------------------------|
| 1    | 32 = 3 ways, 2 positions |
|      | 52 = 5 ways, 2 positions |

Emergency - Rotate to unlock

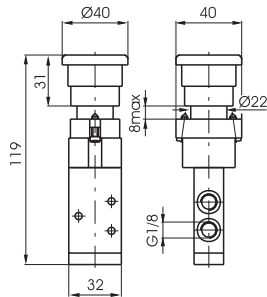


3/2 ways



Weight 235 g  
Operating force 33 N

228.32.6.25

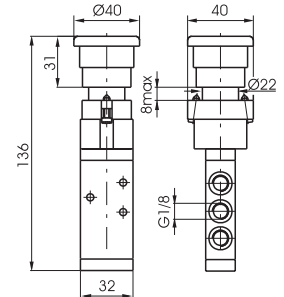


5/2 ways



Weight 235 g  
Operating force 33 N

228.52.6.25

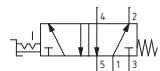
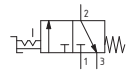


**Switch 2 positions**

Coding: 228.1.6.27

| Operational characteristics           |  |
|---------------------------------------|--|
| Fluid                                 | Filtered air. No lubrication needed, if applied it shall be continuous |
| Max. working pressure (bar)           | 10   |
| Temperature °C                        | -5 ... +70   |
| Flow rate at 6 bar with Δp=1 (NI/min) | 540  |
| Orifice size (mm)                     | 6  |
| Working ports size                    | G1/8"  |

| TYPE |                          |
|------|--------------------------|
| 1    | 32 = 3 ways, 2 positions |
|      | 52 = 5 ways, 2 positions |

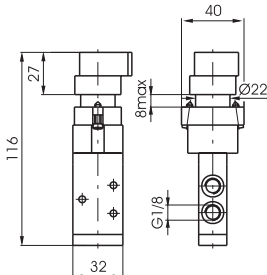


3/2 ways



Weight 230 g

228.32.6.27

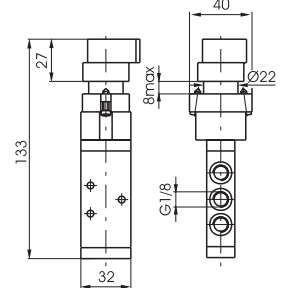


5/2 ways



Weight 250 g

228.52.6.27

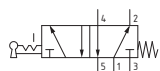
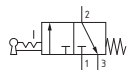


**Key switch 2 positions**

Coding: 228.1.6.28

| Operational characteristics           |  |
|---------------------------------------|--|
| Fluid                                 | Filtered air. No lubrication needed, if applied it shall be continuous |
| Max. working pressure (bar)           | 10   |
| Temperature °C                        | -5 ... +70   |
| Flow rate at 6 bar with Δp=1 (NI/min) | 540  |
| Orifice size (mm)                     | 6  |
| Working ports size                    | G1/8"  |

| TYPE |                          |
|------|--------------------------|
| 1    | 32 = 3 ways, 2 positions |
|      | 52 = 5 ways, 2 positions |

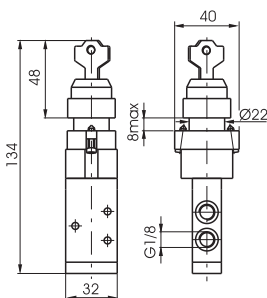


3/2 ways



Weight 230 g

228.32.6.28

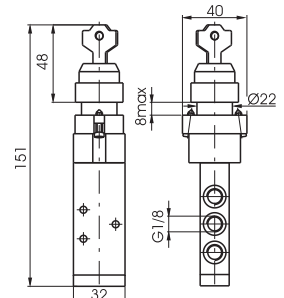


5/2 ways



Weight 250 g

228.52.6.28

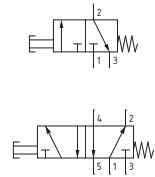


**Palm push button Ø30 2 positions**

Coding: 228. **T**.7.1/**C**

| Operational characteristics           |  |
|---------------------------------------|--|
| Fluid                                 | Filtered air. No lubrication needed, if applied it shall be continuous |
| Max. working pressure (bar)           | 10   |
| Temperature °C                        | -5 ... +70   |
| Flow rate at 6 bar with Δp=1 (NI/min) | 540  |
| Orifice size (mm)                     | 6  |
| Working ports size                    | G1/8"  |

|              |   |
|--------------|---|
| TYPE         | <b>T</b> 32 = 3 ways, 2 positions<br>52 = 5 ways, 2 positions |
| BUTTON COLOR | <b>C</b> 1 = Red<br>2 = Black<br>3 = Green                    |



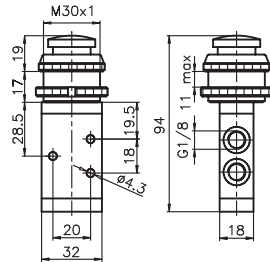
1 AIR DISTRIBUTION

3/2 ways



Weight 148 g

228.32.7.1/**C**

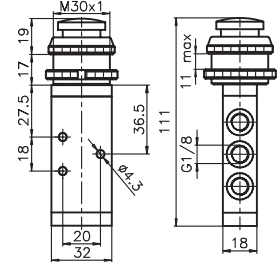


5/2 ways



Weight 168 g

228.52.7.1/**C**

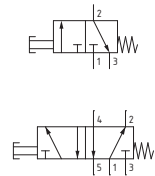


**Push button - Spring**

Coding: 228. **T**.8.1/**C**

| Operational characteristics           |  |
|---------------------------------------|--|
| Fluid                                 | Filtered air. No lubrication needed, if applied it shall be continuous |
| Max. working pressure (bar)           | 10   |
| Temperature °C                        | -5 ... +70   |
| Flow rate at 6 bar with Δp=1 (NI/min) | 540  |
| Orifice size (mm)                     | 6  |
| Working ports size                    | G1/8"  |

|              |   |
|--------------|---|
| TYPE         | <b>T</b> 32 = 3 ways, 2 positions<br>52 = 5 ways, 2 positions |
| BUTTON COLOR | <b>C</b> 1 = Red<br>2 = Black<br>3 = Green                    |

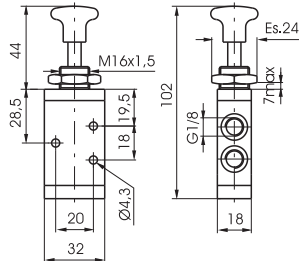


3/2 ways



Weight 120 g

228.32.8.1/**C**

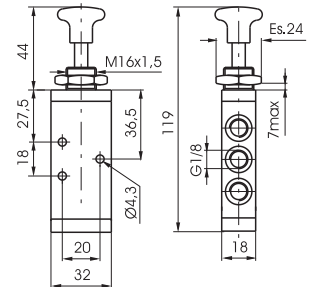


5/2 ways



Weight 140 g

228.52.8.1/**C**

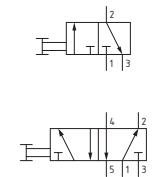


**Push button 2 positions**

Coding: 228. **T**.8/**C**

| Operational characteristics           |  |
|---------------------------------------|--|
| Fluid                                 | Filtered air. No lubrication needed, if applied it shall be continuous |
| Max. working pressure (bar)           | 10   |
| Temperature °C                        | -5 ... +70   |
| Flow rate at 6 bar with Δp=1 (NI/min) | 540  |
| Orifice size (mm)                     | 6  |
| Working ports size                    | G1/8"  |

|              |   |
|--------------|---|
| TYPE         | <b>T</b> 32 = 3 ways, 2 positions<br>52 = 5 ways, 2 positions |
| BUTTON COLOR | <b>C</b> 1 = Red<br>2 = Black<br>3 = Green                    |

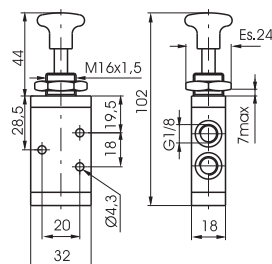


3/2 ways



Weight 120 g

228.32.8/**C**

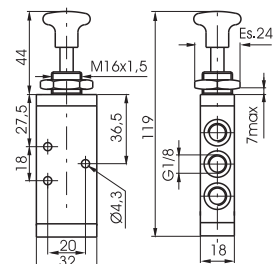


5/2 ways



Weight 140 g

228.52.8/**C**

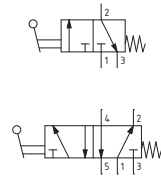


### Lever lateral - Spring

Coding: 228.1.9.1/Ⓒ

| Operational characteristics           |  |
|---------------------------------------|--|
| Fluid                                 | Filtered air. No lubrication needed, if applied it shall be continuous |
| Max. working pressure (bar)           | 10   |
| Temperature °C                        | -5 ... +70   |
| Flow rate at 6 bar with Δp=1 (NI/min) | 540  |
| Orifice size (mm)                     | 6  |
| Working ports size                    | G1/8"  |

|             |   |
|-------------|---|
| TYPE        | 1<br>32 = 3 ways, 2 positions<br>52 = 5 ways, 2 positions |
| LEVER COLOR | Ⓒ<br>1 = Red<br>2 = Black<br>3 = Green                    |

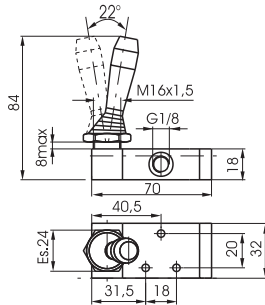


3/2 ways



Weight 140 g

228.32.9.1/Ⓒ

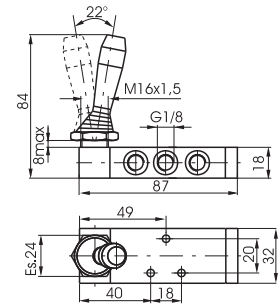


5/2 ways



Weight 160 g

228.52.9.1/Ⓒ

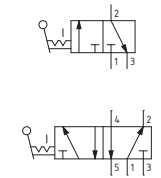


### Lever lateral 2 positions

Coding: 228.1.9/Ⓒ

| Operational characteristics           |  |
|---------------------------------------|--|
| Fluid                                 | Filtered air. No lubrication needed, if applied it shall be continuous |
| Max. working pressure (bar)           | 10   |
| Temperature °C                        | -5 ... +70   |
| Flow rate at 6 bar with Δp=1 (NI/min) | 540  |
| Orifice size (mm)                     | 6  |
| Working ports size                    | G1/8"  |

|             |   |
|-------------|---|
| TYPE        | 1<br>32 = 3 ways, 2 positions<br>52 = 5 ways, 2 positions |
| LEVER COLOR | Ⓒ<br>1 = Red<br>2 = Black<br>3 = Green                    |

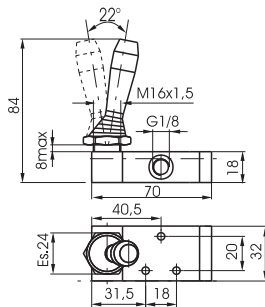


3/2 ways



Weight 140 g

228.32.9/Ⓒ

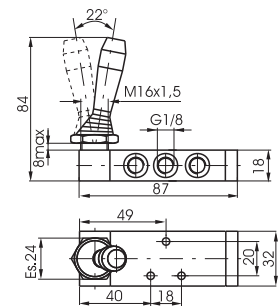


5/2 ways



Weight 160 g

228.52.9/Ⓒ

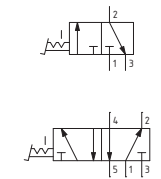


### Pedal aluminium 2 positions

Coding: 228.1.10

| Operational characteristics           |  |
|---------------------------------------|--|
| Fluid                                 | Filtered air. No lubrication needed, if applied it shall be continuous |
| Max. working pressure (bar)           | 10   |
| Temperature °C                        | -5 ... +70   |
| Flow rate at 6 bar with Δp=1 (NI/min) | 540  |
| Orifice size (mm)                     | 6  |
| Working ports size                    | G1/8"  |

|      |   |
|------|---|
| TYPE | 1<br>32 = 3 ways, 2 positions<br>52 = 5 ways, 2 positions |
|------|---|

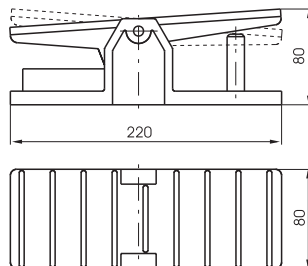


3/2 ways



Weight 790 g

228.32.10

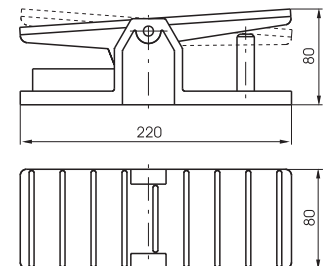


5/2 ways



Weight 810 g

228.52.10



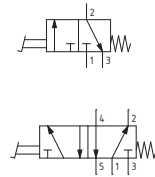
**Pedal aluminium - Spring**

Coding: 228.Ⓣ.10.1

**Operational characteristics**

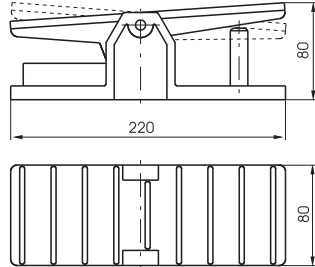
|                                       |  |
|---------------------------------------|--|
| Fluid                                 | Filtered air. No lubrication needed, if applied it shall be continuous |
| Max. working pressure (bar)           | 10   |
| Temperature °C                        | -5 ... +70   |
| Flow rate at 6 bar with Δp=1 (NI/min) | 540  |
| Orifice size (mm)                     | 6  |
| Working ports size                    | G1/8"  |

|                          |   |
|--------------------------|---|
| TYPE                     | Ⓣ |
| 32 = 3 ways, 2 positions |   |
| 52 = 5 ways, 2 positions |   |



1 AIR DISTRIBUTION

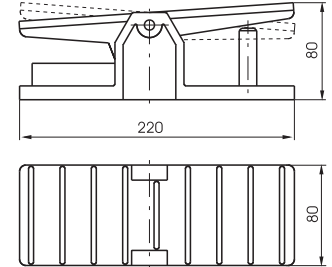
3/2 ways



Weight 790 g

228.32.10.1

5/2 ways



Weight 810 g

228.52.10.1

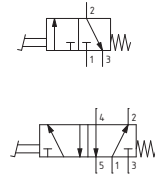
**Pedal protected - Spring**

Coding: 228.Ⓣ.10.Ⓥ

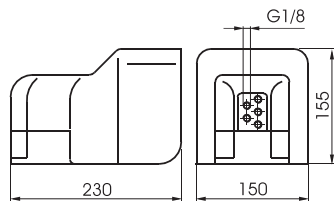
**Operational characteristics**

|                                       |  |
|---------------------------------------|--|
| Fluid                                 | Filtered air. No lubrication needed, if applied it shall be continuous |
| Max. working pressure (bar)           | 10   |
| Temperature °C                        | -5 ... +70   |
| Flow rate at 6 bar with Δp=1 (NI/min) | 540  |
| Orifice size (mm)                     | 6  |
| Working ports size                    | G1/8"  |

|                             |   |
|-----------------------------|---|
| TYPE                        | Ⓣ |
| 32 = 3 ways, 2 positions    |   |
| 52 = 5 ways, 2 positions    |   |
| VERSION                     | Ⓥ |
| 1/1 = Standard version      |   |
| 2/1 = without safety device |   |



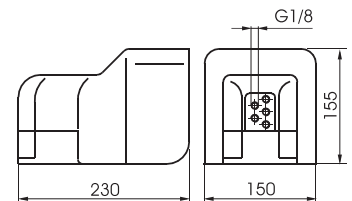
3/2 ways



Weight 1120 g

228.32.10.Ⓥ

5/2 ways



Weight 1120 g

228.52.10.Ⓥ

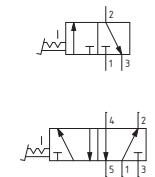
**Pedal protected 2 positions**

Coding: 228.Ⓣ.10/1

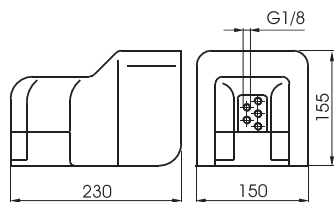
**Operational characteristics**

|                                       |  |
|---------------------------------------|--|
| Fluid                                 | Filtered air. No lubrication needed, if applied it shall be continuous |
| Max. working pressure (bar)           | 10   |
| Temperature °C                        | -5 ... +70   |
| Flow rate at 6 bar with Δp=1 (NI/min) | 540  |
| Orifice size (mm)                     | 6  |
| Working ports size                    | G1/8"  |

|                          |   |
|--------------------------|---|
| TYPE                     | Ⓣ |
| 32 = 3 ways, 2 positions |   |
| 52 = 5 ways, 2 positions |   |



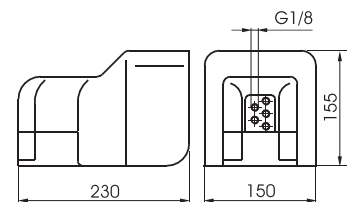
3/2 ways



Weight 1120 g

228.32.10/1

5/2 ways



Weight 1120 g

228.52.10/1

### Pedal plastic miniaturized - Spring

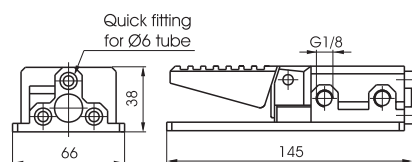
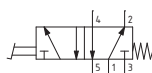
Coding: 228.52.10. **F**

| Operational characteristics                   |  |
|---|--|
| Fluid   | Filtered air. No lubrication needed, if applied it shall be continuous |
| Max. working pressure (bar)                   | 10   |
| Temperature °C                                | -5 ... +70   |
| Flow rate at 6 bar with $\Delta p=1$ (NI/min) | 540  |
| Orifice size (mm)                             | 6  |
| Working ports size                            | G1/8"  |

| FUNCTION |  |
|----------|--|
| <b>F</b> | <b>1P</b> = Standard version<br><b>1PX</b> = Stainless steel spool |



Weight 230 g



### Lever lateral spring centre 3 positions

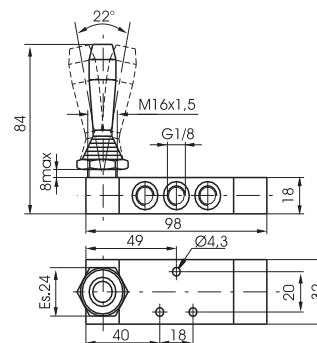
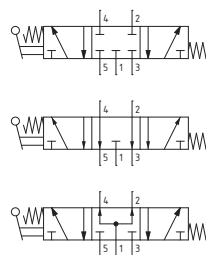
Coding: 228.53. **F.9.1/C**

| Operational characteristics                   |  |
|---|--|
| Fluid   | Filtered air. No lubrication needed, if applied it shall be continuous |
| Max. working pressure (bar)                   | 10   |
| Temperature °C                                | -5 ... +70   |
| Flow rate at 6 bar with $\Delta p=1$ (NI/min) | 540  |
| Orifice size (mm)                             | 6  |
| Working ports size                            | G1/8"  |

| FUNCTION    |   |
|-------------|---|
| <b>F</b>    | <b>31</b> = Closed centres<br><b>32</b> = Open centres<br><b>33</b> = Pressured centres |
| LEVER COLOR |   |
| <b>C</b>    | <b>1</b> = Red<br><b>2</b> = Black<br><b>3</b> = Green                                  |



Weight 190 g



### Lever lateral 3 positions detent

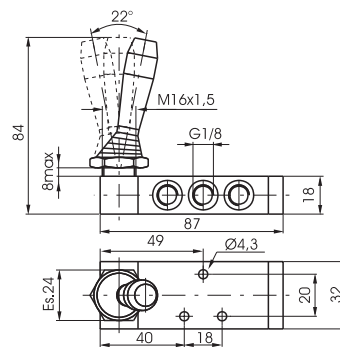
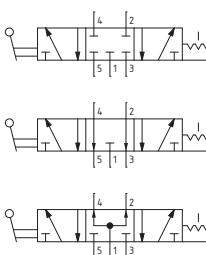
Coding: 228.53. **F.9/C**

| Operational characteristics                   |  |
|---|--|
| Fluid   | Filtered air. No lubrication needed, if applied it shall be continuous |
| Max. working pressure (bar)                   | 10   |
| Temperature °C                                | -5 ... +70   |
| Flow rate at 6 bar with $\Delta p=1$ (NI/min) | 540  |
| Orifice size (mm)                             | 6  |
| Working ports size                            | G1/8"  |

| FUNCTION    |   |
|-------------|---|
| <b>F</b>    | <b>31</b> = Closed centres<br><b>32</b> = Open centres<br><b>33</b> = Pressured centres |
| LEVER COLOR |   |
| <b>C</b>    | <b>1</b> = Red<br><b>2</b> = Black<br><b>3</b> = Green                                  |



Weight 160 g



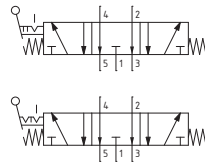
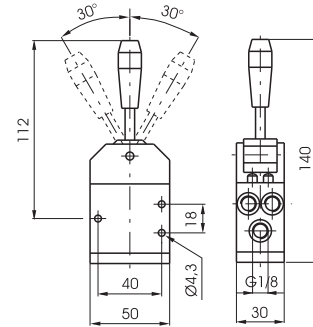


**Lever central Metal**

Coding: 228.53.32.99. **F/C**

| Operational characteristics                   |  |
|---|--|
| Fluid   | Filtered air. No lubrication needed, if applied it shall be continuous |
| Max. working pressure (bar)                   | 10   |
| Temperature °C                                | -5 ... +70   |
| Flow rate at 6 bar with $\Delta p=1$ (NI/min) | 410  |
| Orifice size (mm)                             | 6  |
| Working ports size                            | G1/8"  |

|          |                      |
|----------|----------------------|
| <b>F</b> | FUNCTION             |
| <b>2</b> | = 2 stable positions |
| <b>3</b> | = 3 stable positions |
| <b>C</b> | LEVER COLOR          |
| <b>1</b> | = Red                |
| <b>2</b> | = Black              |



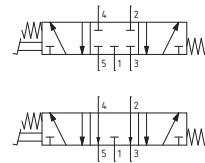
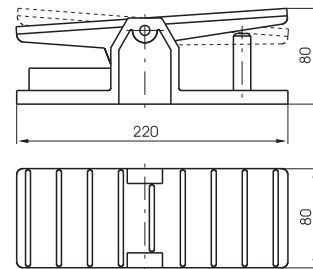
Weight 140 g

**Pedal - Spring 3 positions**

Coding: 228.53. **F**.10.1

| Operational characteristics                   |  |
|---|--|
| Fluid   | Filtered air. No lubrication needed, if applied it shall be continuous |
| Max. working pressure (bar)                   | 10   |
| Temperature °C                                | -5 ... +70   |
| Flow rate at 6 bar with $\Delta p=1$ (NI/min) | 410  |
| Orifice size (mm)                             | 6  |
| Working ports size                            | G1/8"  |

|           |                  |
|-----------|------------------|
| <b>F</b>  | FUNCTION         |
| <b>31</b> | = Closed centres |
| <b>32</b> | = Open centres   |



Weight 810 g

1  
AIR DISTRIBUTION



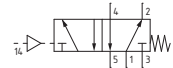
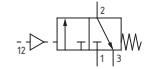
**Pneumatic - Spring**

Coding: 228.●.11.1

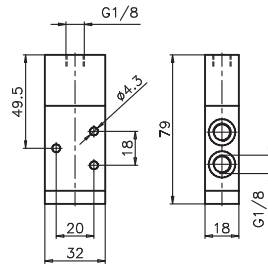
**Operational characteristics**

|                                       |  |
|---------------------------------------|--|
| Fluid                                 | Filtered air. No lubrication needed, if applied it shall be continuous |
| Max. working pressure (bar)           | 10   |
| Temperature °C                        | -5 ... +70   |
| Flow rate at 6 bar with Δp=1 (NI/min) | 540  |
| Orifice size (mm)                     | 6  |
| Working ports size                    | G1/8"  |
| Pilot ports size                      | G1/8"  |

|      |                          |
|------|--------------------------|
| TYPE |                          |
| ●    | 32 = 3 ways, 2 positions |
| ●    | 52 = 5 ways, 2 positions |



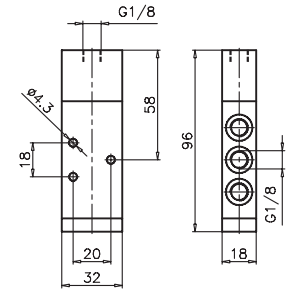
3/2 ways



Weight 110 g  
Minimum pilot pressure 2,5 bar

228.32.11.1

5/2 ways



Weight 130 g  
Minimum pilot pressure 2,5 bar

228.52.11.1

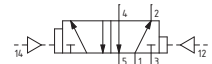
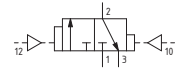
**Pneumatic - Differential**

Coding: 228.●.11.12

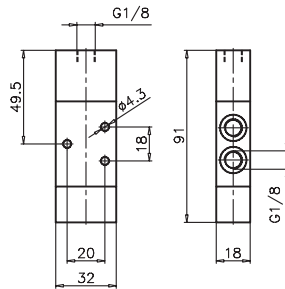
**Operational characteristics**

|                                       |  |
|---------------------------------------|--|
| Fluid                                 | Filtered air. No lubrication needed, if applied it shall be continuous |
| Max. working pressure (bar)           | 10   |
| Temperature °C                        | -5 ... +70   |
| Flow rate at 6 bar with Δp=1 (NI/min) | 540  |
| Orifice size (mm)                     | 6  |
| Working ports size                    | G1/8"  |
| Pilot ports size                      | G1/8"  |

|      |                          |
|------|--------------------------|
| TYPE |                          |
| ●    | 32 = 3 ways, 2 positions |
| ●    | 52 = 5 ways, 2 positions |



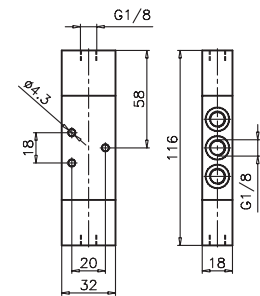
3/2 ways



Weight 140 g  
Minimum pilot pressure 2,5 bar

228.32.11.12

5/2 ways



Weight 160 g  
Minimum pilot pressure 2,5 bar

228.52.11.12

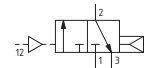
**Pneumatic-Differential (Self feeding)**

Coding: 228.●.11.12/1

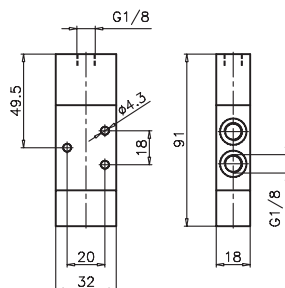
**Operational characteristics**

|                                       |  |
|---------------------------------------|--|
| Fluid                                 | Filtered air. No lubrication needed, if applied it shall be continuous |
| Max. working pressure (bar)           | 10   |
| Temperature °C                        | -5 ... +70   |
| Flow rate at 6 bar with Δp=1 (NI/min) | 540  |
| Orifice size (mm)                     | 6  |
| Working ports size                    | G1/8"  |
| Pilot ports size                      | G1/8"  |

|      |                          |
|------|--------------------------|
| TYPE |                          |
| ●    | 32 = 3 ways, 2 positions |
| ●    | 52 = 5 ways, 2 positions |



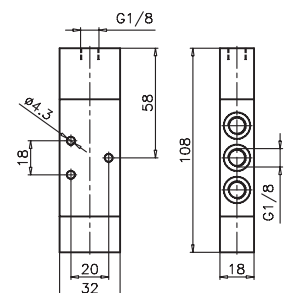
3/2 ways



Weight 130 g  
Minimum pilot pressure 2,5 bar

228.32.11.12/1

5/2 ways



Weight 150 g  
Minimum pilot pressure 2,5 bar

228.52.11.12/1

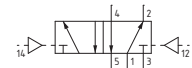
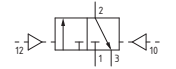
1 AIR DISTRIBUTION

**Pneumatic-Pneumatic**

Coding: 228.1.11.11

| Operational characteristics                   |  |
|---|--|
| Fluid   | Filtered air. No lubrication needed, if applied it shall be continuous |
| Max. working pressure (bar)                   | 10   |
| Temperature °C                                | -5 ... +70   |
| Flow rate at 6 bar with $\Delta p=1$ (NI/min) | 540  |
| Orifice size (mm)                             | 6  |
| Working ports size                            | G1/8"  |
| Pilot ports size                              | G1/8"  |

| TYPE |                          |
|------|--------------------------|
| 1    | 32 = 3 ways, 2 positions |
|      | 52 = 5 ways, 2 positions |

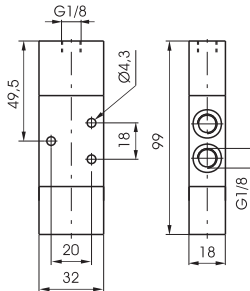


3/2 ways



Weight 140 g  
Minimum pilot pressure 2 bar

228.32.11.11

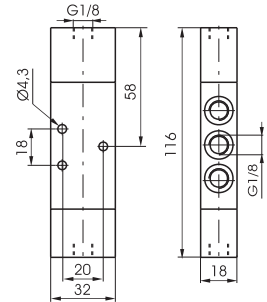


5/2 ways



Weight 160 g  
Minimum pilot pressure 2 bar

228.52.11.11

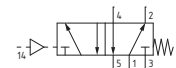
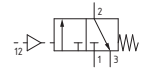


**Amplified pneumatic - Spring**

Coding: 228.1.13.1

| Operational characteristics                   |  |
|---|--|
| Fluid   | Filtered air. No lubrication needed, if applied it shall be continuous |
| Max. working pressure (bar)                   | 10   |
| Temperature °C                                | -5 ... +70   |
| Flow rate at 6 bar with $\Delta p=1$ (NI/min) | 540  |
| Orifice size (mm)                             | 6  |
| Working ports size                            | G1/8"  |
| Pilot ports size                              | G1/8"  |

| TYPE |                          |
|------|--------------------------|
| 1    | 32 = 3 ways, 2 positions |
|      | 52 = 5 ways, 2 positions |

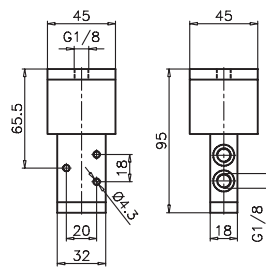


3/2 ways



Weight 260 g  
Minimum pilot pressure 0,5 bar

228.32.13.1

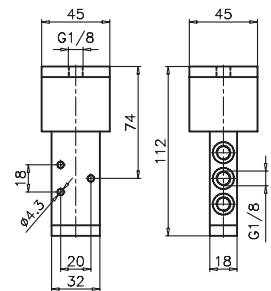


5/2 ways



Weight 290 g  
Minimum pilot pressure 0,5 bar

228.52.13.1



**Pneumatic-Pneumatic 5/3**

Coding: 228.53.1.11.11

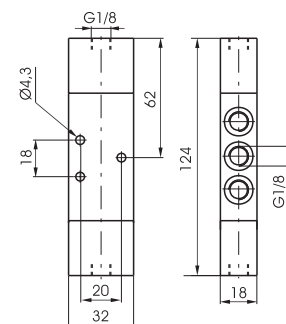
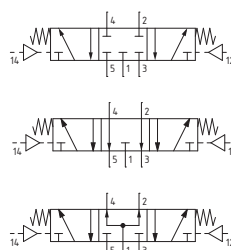
| Operational characteristics                   |  |
|---|--|
| Fluid   | Filtered air. No lubrication needed, if applied it shall be continuous |
| Max. working pressure (bar)                   | 10   |
| Temperature °C                                | -5 ... +70   |
| Flow rate at 6 bar with $\Delta p=1$ (NI/min) | 410  |
| Orifice size (mm)                             | 6  |
| Working ports size                            | G1/8"  |
| Pilot ports size                              | G1/8"  |

| FUNCTION |                        |
|----------|------------------------|
| F        | 31 = Closed centres    |
|          | 32 = Open centres      |
|          | 33 = Pressured centres |



Weight 180 g  
Minimum pilot pressure 3 bar

228.53.1.11.11



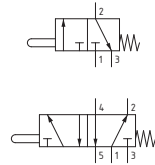
**Tappet panel - Spring**

Coding: 224.1.1.1

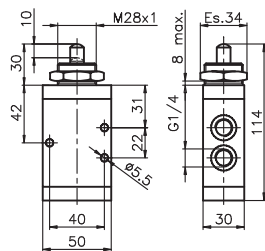
**Operational characteristics**

|   |  |
|---|--|
| Fluid   | Filtered air. No lubrication needed, if applied it shall be continuous |
| Max. working pressure (bar)                   | 10   |
| Temperature °C                                | -5 ... +70   |
| Flow rate at 6 bar with $\Delta p=1$ (NI/min) | 1360   |
| Orifice size (mm)                             | 8  |
| Working ports size                            | G1/4"  |

|      |                     |
|------|---------------------|
| TYPE |                     |
| 32   | 3 ways, 2 positions |
| 52   | 5 ways, 2 positions |



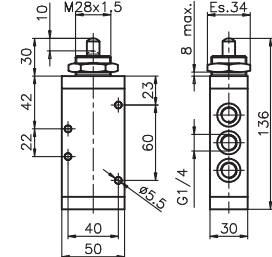
3/2 ways



Weight 370 g  
Operating force 71,5 N

224.32.1.1

5/2 ways



Weight 455 g  
Operating force 71,5 N

224.52.1.1

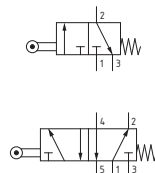
**Lever roller - Spring**

Coding: 224.2.1

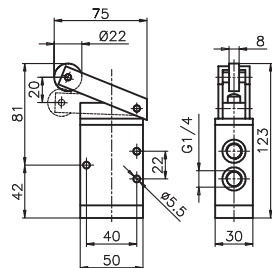
**Operational characteristics**

|   |  |
|---|--|
| Fluid   | Filtered air. No lubrication needed, if applied it shall be continuous |
| Max. working pressure (bar)                   | 10   |
| Temperature °C                                | -5 ... +70   |
| Flow rate at 6 bar with $\Delta p=1$ (NI/min) | 1360   |
| Orifice size (mm)                             | 8  |
| Working ports size                            | G1/4"  |

|      |                     |
|------|---------------------|
| TYPE |                     |
| 32   | 3 ways, 2 positions |
| 52   | 5 ways, 2 positions |



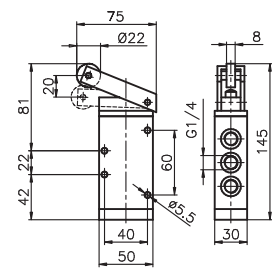
3/2 ways



Weight 510 g  
Operating force 35 N

224.32.2.1

5/2 ways



Weight 595 g  
Operating force 35 N

224.52.2.1

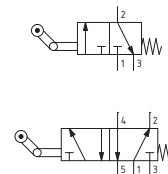
**Lever roller unidirectional - Spring**

Coding: 224.3.1

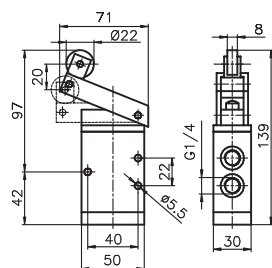
**Operational characteristics**

|   |  |
|---|--|
| Fluid   | Filtered air. No lubrication needed, if applied it shall be continuous |
| Max. working pressure (bar)                   | 10   |
| Temperature °C                                | -5 ... +70   |
| Flow rate at 6 bar with $\Delta p=1$ (NI/min) | 1360   |
| Orifice size (mm)                             | 8  |
| Working ports size                            | G1/4"  |

|      |                     |
|------|---------------------|
| TYPE |                     |
| 32   | 3 ways, 2 positions |
| 52   | 5 ways, 2 positions |



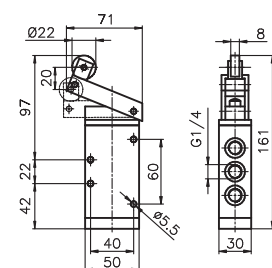
3/2 ways



Weight 525 g  
Operating force 35 N

224.32.3.1

5/2 ways



Weight 610 g  
Operating force 35 N

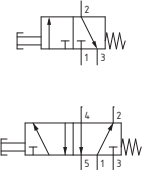
224.52.3.1

**Push button - Spring**

Coding: 224.1.8.1

| Operational characteristics                   |  |
|---|--|
| Fluid   | Filtered air. No lubrication needed, if applied it shall be continuous |
| Max. working pressure (bar)                   | 10   |
| Temperature °C                                | -5 ... +70   |
| Flow rate at 6 bar with $\Delta p=1$ (NI/min) | 1360   |
| Orifice size (mm)                             | 8  |
| Working ports size                            | G1/4"  |

| TYPE |  |
|------|--|
| 1    | 32 = 3 ways, 2 positions<br>52 = 5 ways, 2 positions |

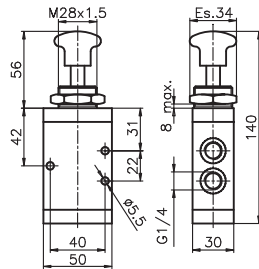


3/2 ways



Weight 395 g  
Operating force 71,5 N

224.32.8.1

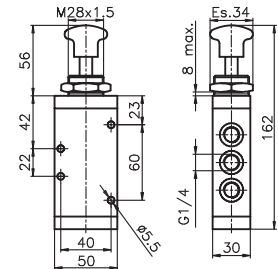


5/2 ways



Weight 480 g  
Operating force 71,5 N

224.52.8.1

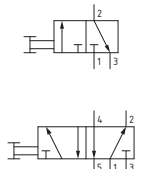


**Push button 2 positions**

Coding: 224.1.8

| Operational characteristics                   |  |
|---|--|
| Fluid   | Filtered air. No lubrication needed, if applied it shall be continuous |
| Max. working pressure (bar)                   | 10   |
| Temperature °C                                | -5 ... +70   |
| Flow rate at 6 bar with $\Delta p=1$ (NI/min) | 1360   |
| Orifice size (mm)                             | 8  |
| Working ports size                            | G1/4"  |

| TYPE |  |
|------|--|
| 1    | 32 = 3 ways, 2 positions<br>52 = 5 ways, 2 positions |

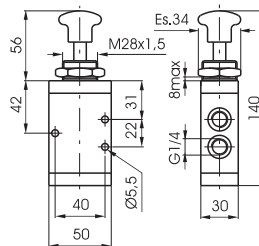


3/2 ways



Weight 385 g  
Operating force 13 N

224.32.8

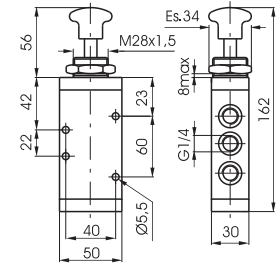


5/2 ways



Weight 470 g  
Operating force 13 N

224.52.8

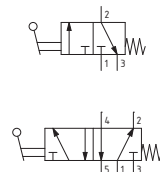


**Lever lateral - Spring**

Coding: 224.1.9.1/C

| Operational characteristics                   |  |
|---|--|
| Fluid   | Filtered air. No lubrication needed, if applied it shall be continuous |
| Max. working pressure (bar)                   | 10   |
| Temperature °C                                | -5 ... +70   |
| Flow rate at 6 bar with $\Delta p=1$ (NI/min) | 1360   |
| Orifice size (mm)                             | 8  |
| Working ports size                            | G1/4"  |

| TYPE        |  |
|-------------|--|
| 1           | 32 = 3 ways, 2 positions<br>52 = 5 ways, 2 positions |
| LEVER COLOR |  |
| C           | 1 = Red<br>2 = Black<br>3 = Green                    |

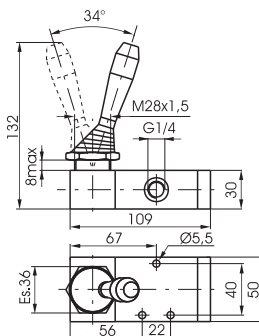


3/2 ways



Weight 520 g

224.32.9.1/C

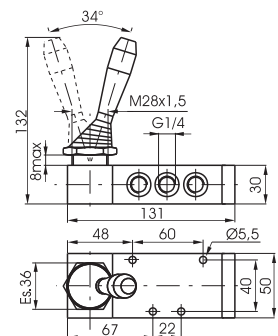


5/2 ways



Weight 605 g

224.52.9.1/C



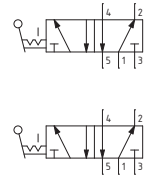


**Lever lateral 2 positions**

Coding: 224. **T**.9/ **C**

| Operational characteristics                   |  |
|---|--|
| Fluid   | Filtered air. No lubrication needed, if applied it shall be continuous |
| Max. working pressure (bar)                   | 10   |
| Temperature °C                                | -5 ... +70   |
| Flow rate at 6 bar with $\Delta p=1$ (NI/min) | 1360   |
| Orifice size (mm)                             | 8  |
| Working ports size                            | G1/4"  |

| TYPE        |  |
|-------------|--|
| <b>T</b>    | <b>32</b> = 3 ways, 2 positions<br><b>52</b> = 5 ways, 2 positions |
| LEVER COLOR |  |
| <b>C</b>    | <b>1</b> = Red<br><b>2</b> = Black<br><b>3</b> = Green             |



1  
AIR DISTRIBUTION

**3/2 ways**

Weight 510 g  
224.32.9/ **C**

**5/2 ways**

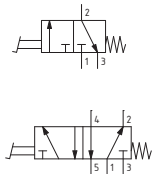
Weight 595 g  
224.52.9/ **C**

**Pedal aluminium - Spring**

Coding: 224. **T**.10.1

| Operational characteristics                   |  |
|---|--|
| Fluid   | Filtered air. No lubrication needed, if applied it shall be continuous |
| Max. working pressure (bar)                   | 10   |
| Temperature °C                                | -5 ... +70   |
| Flow rate at 6 bar with $\Delta p=1$ (NI/min) | 1360   |
| Orifice size (mm)                             | 8  |
| Working ports size                            | G1/4"  |

| TYPE     |  |
|----------|--|
| <b>T</b> | <b>32</b> = 3 ways, 2 positions<br><b>52</b> = 5 ways, 2 positions |



**3/2 ways**

Weight 1070 g  
224.32.10.1

**5/2 ways**

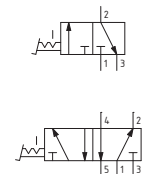
Weight 1155 g  
224.52.10.1

**Pedal aluminium 2 positions**

Coding: 224. **T**.10

| Operational characteristics                   |  |
|---|--|
| Fluid   | Filtered air. No lubrication needed, if applied it shall be continuous |
| Max. working pressure (bar)                   | 10   |
| Temperature °C                                | -5 ... +70   |
| Flow rate at 6 bar with $\Delta p=1$ (NI/min) | 1360   |
| Orifice size (mm)                             | 8  |
| Working ports size                            | G1/4"  |

| TYPE     |  |
|----------|--|
| <b>T</b> | <b>32</b> = 3 ways, 2 positions<br><b>52</b> = 5 ways, 2 positions |



**3/2 ways**

Weight 1060 g  
224.32.10

**5/2 ways**

Weight 1145 g  
224.52.10

**Lateral Lever spring - 3 positions**

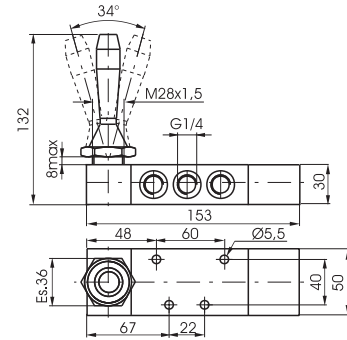
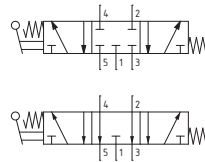
Coding: 224.53.Ⓕ.9.1/Ⓒ

| Operational characteristics                   |  |
|---|--|
| Fluid   | Filtered air. No lubrication needed, if applied it shall be continuous |
| Max. working pressure (bar)                   | 10   |
| Temperature °C                                | -5 ... +70   |
| Flow rate at 6 bar with $\Delta p=1$ (NI/min) | 1280   |
| Orifice size (mm)                             | 8  |
| Working ports size                            | G1/4"  |

|   |  |
|---|--|
| Ⓕ | FUNCTION                                 |
|   | 31 = Closed centres<br>32 = Open centres |
| Ⓒ | LEVER COLOR                              |
|   | 1 = Red                                  |
|   | 2 = Black                                |
|   | 3 = Green                                |



Weight 745 g



**Lever lateral 3 positions detent**

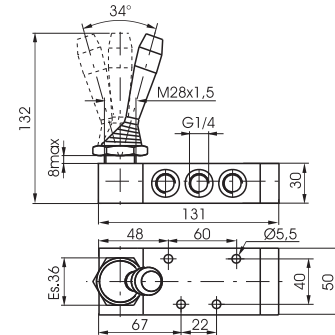
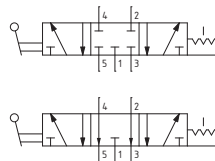
Coding: 224.53.Ⓕ.9/Ⓒ

| Operational characteristics                   |  |
|---|--|
| Fluid   | Filtered air. No lubrication needed, if applied it shall be continuous |
| Max. working pressure (bar)                   | 10   |
| Temperature °C                                | -5 ... +70   |
| Flow rate at 6 bar with $\Delta p=1$ (NI/min) | 1280   |
| Orifice size (mm)                             | 8  |
| Working ports size                            | G1/4"  |

|   |  |
|---|--|
| Ⓕ | FUNCTION                                 |
|   | 31 = Closed centres<br>32 = Open centres |
| Ⓒ | LEVER COLOR                              |
|   | 1 = Red                                  |
|   | 2 = Black                                |
|   | 3 = Green                                |



Weight 605 g



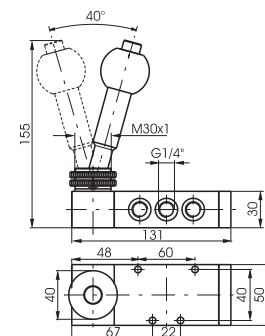
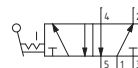
**Lever lateral with locking device - 2 positions**

Coding: 224.52.9.2

| Operational characteristics                   |  |
|---|--|
| Fluid   | Filtered air. No lubrication needed, if applied it shall be continuous |
| Max. working pressure (bar)                   | 10   |
| Temperature °C                                | -5 ... +70   |
| Flow rate at 6 bar with $\Delta p=1$ (NI/min) | 1020   |
| Orifice size (mm)                             | 8  |
| Working ports size                            | G1/4"  |



Weight 825 g





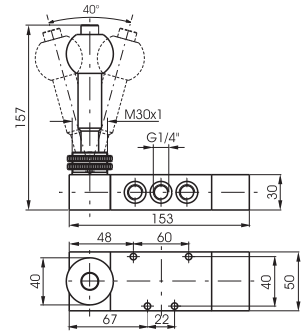
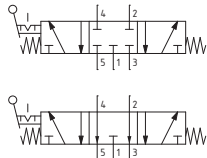
1  
AIR DISTRIBUTION

**Lever lateral with locking device - Spring 3 positions**

Coding: 224.53.9.2

| Operational characteristics           |  |
|---------------------------------------|--|
| Fluid                                 | Filtered air. No lubrication needed, if applied it shall be continuous |
| Max. working pressure (bar)           | 10   |
| Temperature °C                        | -5 ... +70   |
| Flow rate at 6 bar with Δp=1 (NI/min) | 1020   |
| Orifice size (mm)                     | 8  |
| Working ports size                    | G1/4"  |

| FUNCTION |                            |
|----------|----------------------------|
| <b>F</b> | <b>31</b> = Closed centres |
|          | <b>32</b> = Open centres   |



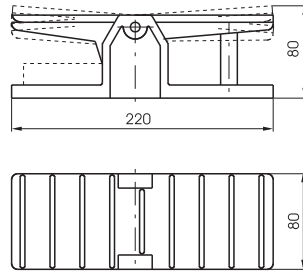
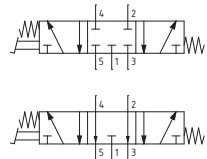
Weight 965 g

**Pedal - Spring 3 positions**

Coding: 224.53.10.1

| Operational characteristics           |  |
|---------------------------------------|--|
| Fluid                                 | Filtered air. No lubrication needed, if applied it shall be continuous |
| Max. working pressure (bar)           | 10   |
| Temperature °C                        | -5 ... +70   |
| Flow rate at 6 bar with Δp=1 (NI/min) | 1280   |
| Orifice size (mm)                     | 8  |
| Working ports size                    | G1/4"  |

| FUNCTION |                            |
|----------|----------------------------|
| <b>F</b> | <b>31</b> = Closed centres |
|          | <b>32</b> = Open centres   |



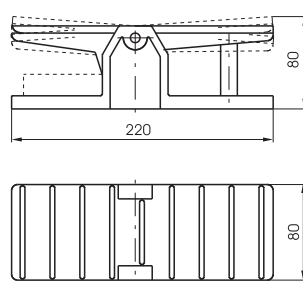
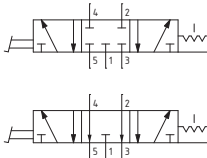
Weight 1285 g

**Pedal 3 positions**

Coding: 224.53.10

| Operational characteristics           |  |
|---------------------------------------|--|
| Fluid                                 | Filtered air. No lubrication needed, if applied it shall be continuous |
| Max. working pressure (bar)           | 10   |
| Temperature °C                        | -5 ... +70   |
| Flow rate at 6 bar with Δp=1 (NI/min) | 1280   |
| Orifice size (mm)                     | 8  |
| Working ports size                    | G1/4"  |

| FUNCTION |                            |
|----------|----------------------------|
| <b>F</b> | <b>31</b> = Closed centres |
|          | <b>32</b> = Open centres   |



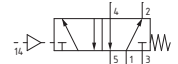
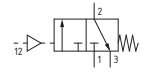
Weight 1145 g

**Pneumatic - Spring**

Coding: 224.11.1

| Operational characteristics                   |  |
|---|--|
| Fluid   | Filtered air. No lubrication needed, if applied it shall be continuous |
| Max. working pressure (bar)                   | 10   |
| Temperature °C                                | -5 ... +70   |
| Flow rate at 6 bar with $\Delta p=1$ (NI/min) | 1360   |
| Orifice size (mm)                             | 8  |
| Working ports size                            | G1/4"  |
| Pilot ports size                              | G1/8"  |

| TYPE |                          |
|------|--------------------------|
| ①    | 32 = 3 ways, 2 positions |
|      | 52 = 5 ways, 2 positions |

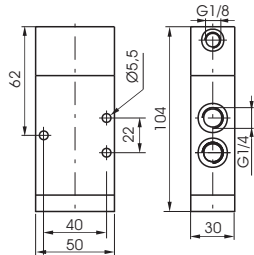


3/2 ways



Weight 370 g  
Minimum pilot pressure 2,5 bar

224.32.11.1

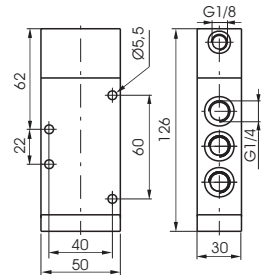


5/2 ways



Weight 450 g  
Minimum pilot pressure 2,5 bar

224.52.11.1

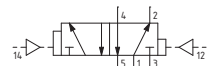
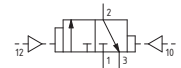


**Pneumatic - Differential**

Coding: 224.11.12

| Operational characteristics                   |  |
|---|--|
| Fluid   | Filtered air. No lubrication needed, if applied it shall be continuous |
| Max. working pressure (bar)                   | 10   |
| Temperature °C                                | -5 ... +70   |
| Flow rate at 6 bar with $\Delta p=1$ (NI/min) | 1360   |
| Orifice size (mm)                             | 8  |
| Working ports size                            | G1/4"  |
| Pilot ports size                              | G1/8"  |

| TYPE |                          |
|------|--------------------------|
| ①    | 32 = 3 ways, 2 positions |
|      | 52 = 5 ways, 2 positions |

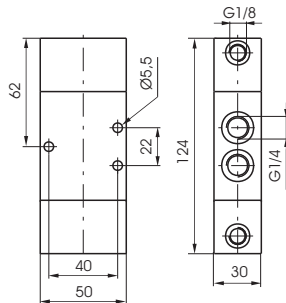


3/2 ways



Weight 480 g  
Minimum pilot pressure 2,5 bar

224.32.11.12

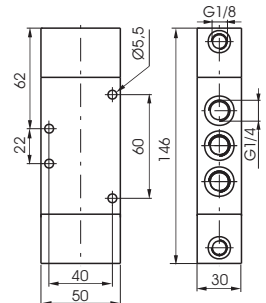


5/2 ways



Weight 550 g  
Minimum pilot pressure 2,5 bar

224.52.11.12

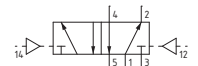
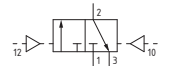


**Pneumatic-Pneumatic**

Coding: 224.11.11

| Operational characteristics                   |  |
|---|--|
| Fluid   | Filtered air. No lubrication needed, if applied it shall be continuous |
| Max. working pressure (bar)                   | 10   |
| Temperature °C                                | -5 ... +70   |
| Flow rate at 6 bar with $\Delta p=1$ (NI/min) | 1360   |
| Orifice size (mm)                             | 8  |
| Working ports size                            | G1/4"  |
| Pilot ports size                              | G1/8"  |

| TYPE |                          |
|------|--------------------------|
| ①    | 32 = 3 ways, 2 positions |
|      | 52 = 5 ways, 2 positions |

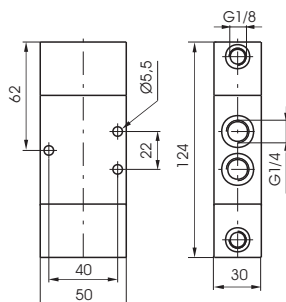


3/2 ways



Weight 470 g  
Minimum pilot pressure 2 bar

224.32.11.11

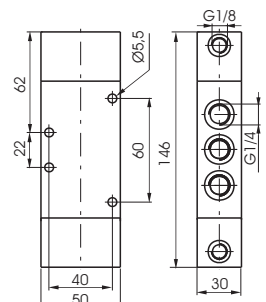


5/2 ways



Weight 540 g  
Minimum pilot pressure 2 bar

224.52.11.11



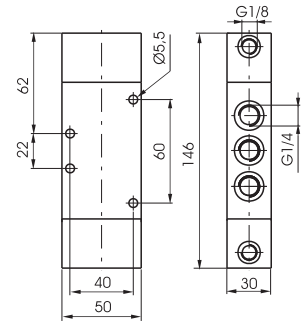
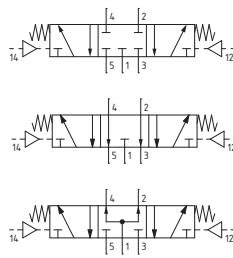


**Pneumatic-Pneumatic 5/3**

Coding: 224.53.F.11.11

| Operational characteristics           |  |
|---------------------------------------|--|
| Fluid                                 | Filtered air. No lubrication needed, if applied it shall be continuous |
| Max. working pressure (bar)           | 10   |
| Temperature °C                        | -5 ... +70   |
| Flow rate at 6 bar with Δp=1 (Nl/min) | 1280   |
| Orifice size (mm)                     | 8  |
| Working ports size                    | G1/4"  |
| Pilot ports size                      | G1/8"  |

| FUNCTION |                               |
|----------|-------------------------------|
| <b>F</b> | <b>31 = Closed centres</b>    |
|          | <b>32 = Open centres</b>      |
|          | <b>33 = Pressured centres</b> |



Weight 550 g  
 Minimum pilot pressure 3 bar

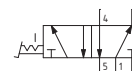
1 AIR DISTRIBUTION

**Pedal protected 2 positions**

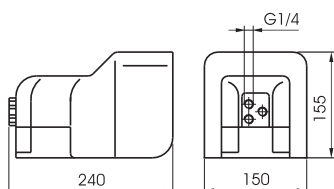
Coding: 214.10.10/1

| Operational characteristics                   |  |
|---|--|
| Fluid   | Filtered air. No lubrication needed, if applied it shall be continuous |
| Max. working pressure (bar)                   | 10   |
| Temperature °C                                | -5 ... +70   |
| Flow rate at 6 bar with $\Delta p=1$ (NI/min) | 1360   |
| Orifice size (mm)                             | 8  |
| Working ports size                            | G1/4"  |

| TYPE |                          |
|------|--------------------------|
| 1    | 32 = 3 ways, 2 positions |
|      | 52 = 5 ways, 2 positions |



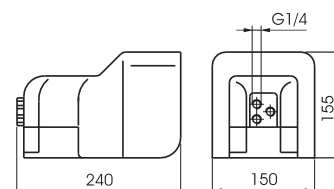
3/2 ways



Weight 1730 g

214.32.10/1

5/2 ways



Weight 1730 g

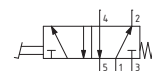
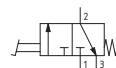
214.52.10/1

**Pedal protected - Spring**

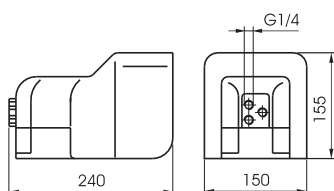
Coding: 214.10.10.V

| Operational characteristics                   |  |
|---|--|
| Fluid   | Filtered air. No lubrication needed, if applied it shall be continuous |
| Max. working pressure (bar)                   | 10   |
| Temperature °C                                | -5 ... +70   |
| Flow rate at 6 bar with $\Delta p=1$ (NI/min) | 1360   |
| Orifice size (mm)                             | 8  |
| Working ports size                            | G1/4"  |

| TYPE    |                             |
|---------|-----------------------------|
| 1       | 32 = 3 ways, 2 positions    |
|         | 52 = 5 ways, 2 positions    |
| VERSION |                             |
| V       | 1/1 = Standard version      |
|         | 2/1 = without safety device |



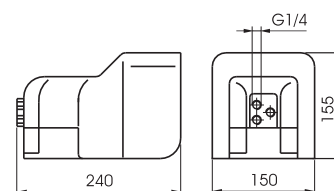
3/2 ways



Weight 1730 g

214.32.10.V

5/2 ways



Weight 1730 g

214.52.10.V

1  
AIR DISTRIBUTION

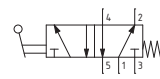
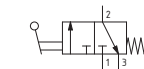
**Lever lateral - Spring**

Coding: 212.●.9.1

**Operational characteristics**

|                                       |  |
|---------------------------------------|--|
| Fluid                                 | Filtered air. No lubrication needed, if applied it shall be continuous |
| Max. working pressure (bar)           | 10   |
| Temperature °C                        | -5 ... +70   |
| Flow rate at 6 bar with Δp=1 (NI/min) | 3500   |
| Orifice size (mm)                     | 15   |
| Working ports size                    | G1/2"  |

|      |                          |
|------|--------------------------|
| TYPE |                          |
| ●    | 32 = 3 ways, 2 positions |
| ●    | 52 = 5 ways, 2 positions |

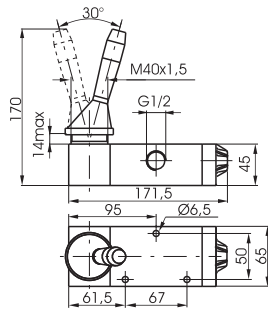


3/2 ways



Weight 1480 g

212.32.9.1

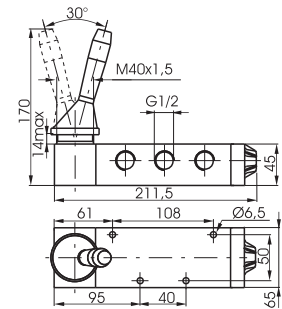


5/2 ways



Weight 1765 g

212.52.9.1



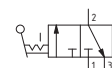
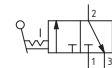
**Lever lateral 2 positions**

Coding: 212.●.9

**Operational characteristics**

|                                       |  |
|---------------------------------------|--|
| Fluid                                 | Filtered air. No lubrication needed, if applied it shall be continuous |
| Max. working pressure (bar)           | 10   |
| Temperature °C                        | -5 ... +70   |
| Flow rate at 6 bar with Δp=1 (NI/min) | 3500   |
| Orifice size (mm)                     | 15   |
| Working ports size                    | G1/2"  |

|      |                          |
|------|--------------------------|
| TYPE |                          |
| ●    | 32 = 3 ways, 2 positions |
| ●    | 52 = 5 ways, 2 positions |

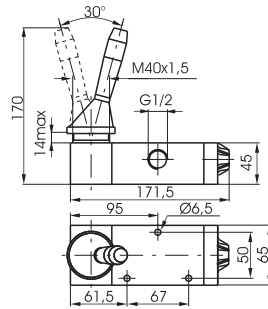


3/2 ways



Weight 1460 g

212.32.9

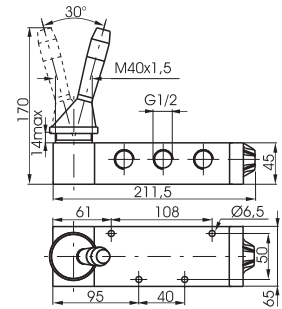


5/2 ways



Weight 1745 g

212.52.9



**Lever lateral spring centre 3 positions**

Coding: 212.53.●.9.1

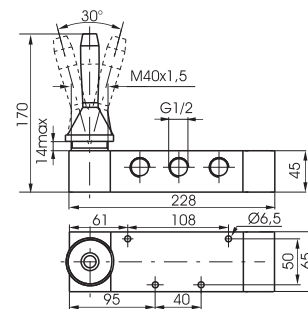
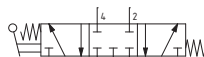
**Operational characteristics**

|                                       |  |
|---------------------------------------|--|
| Fluid                                 | Filtered air. No lubrication needed, if applied it shall be continuous |
| Max. working pressure (bar)           | 10   |
| Temperature °C                        | -5 ... +70   |
| Flow rate at 6 bar with Δp=1 (NI/min) | 3000   |
| Orifice size (mm)                     | 15   |
| Working ports size                    | G1/2"  |

|          |                     |
|----------|---------------------|
| FUNCTION |                     |
| ●        | 31 = Closed centres |
| ●        | 32 = Open centres   |



Weight 2100 g



AIR DISTRIBUTION

**Lever lateral 3 positions detent**

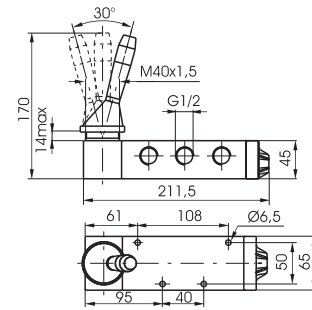
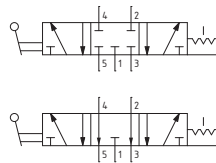
Coding: 212.53.F.9

| Operational characteristics                   |  |
|---|--|
| Fluid   | Filtered air. No lubrication needed, if applied it shall be continuous |
| Max. working pressure (bar)                   | 10   |
| Temperature °C                                | -5 ... +70   |
| Flow rate at 6 bar with $\Delta p=1$ (Nl/min) | 3000   |
| Orifice size (mm)                             | 15   |
| Working ports size                            | G1/2"  |

| FUNCTION |                            |
|----------|----------------------------|
| <b>F</b> | <b>31</b> = Closed centres |
|          | <b>32</b> = Open centres   |



Weight 1765 g





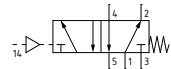
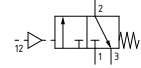
**Pneumatic - Spring**

Coding: 212.1.11.1

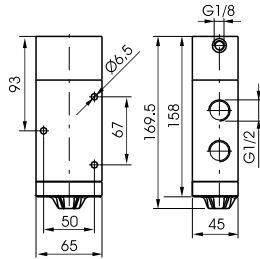
**Operational characteristics**

|   |  |
|---|--|
| Fluid   | Filtered air. No lubrication needed, if applied it shall be continuous |
| Max. working pressure (bar)                   | 10   |
| Temperature °C                                | -5 ... +70   |
| Flow rate at 6 bar with $\Delta p=1$ (NI/min) | 3500   |
| Orifice size (mm)                             | 15   |
| Working ports size                            | G1/2"  |
| Pilot ports size                              | G1/8"  |

|      |                     |
|------|---------------------|
| TYPE |                     |
| 32   | 3 ways, 2 positions |
| 52   | 5 ways, 2 positions |



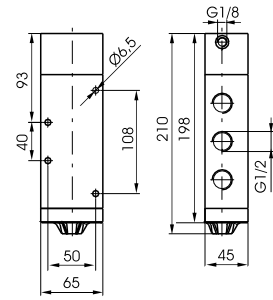
3/2 ways



Weight 1110 g  
Minimum pilot pressure 2,5 bar

212.32.11.1

5/2 ways



Weight 1390 g  
Minimum pilot pressure 2,5 bar

212.52.11.1

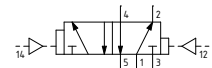
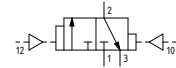
**Pneumatic - Differential**

Coding: 212.1.11.12

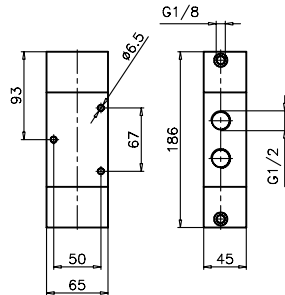
**Operational characteristics**

|   |  |
|---|--|
| Fluid   | Filtered air. No lubrication needed, if applied it shall be continuous |
| Max. working pressure (bar)                   | 10   |
| Temperature °C                                | -5 ... +70   |
| Flow rate at 6 bar with $\Delta p=1$ (NI/min) | 3500   |
| Orifice size (mm)                             | 15   |
| Working ports size                            | G1/2"  |
| Pilot ports size                              | G1/8"  |

|      |                     |
|------|---------------------|
| TYPE |                     |
| 32   | 3 ways, 2 positions |
| 52   | 5 ways, 2 positions |



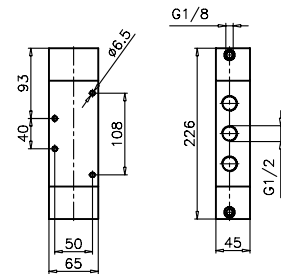
3/2 ways



Weight 1380 g  
Minimum pilot pressure 2,5 bar

212.32.11.12

5/2 ways



Weight 1660 g  
Minimum pilot pressure 2,5 bar

212.52.11.12

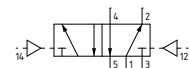
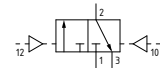
**Pneumatic-Pneumatic**

Coding: 212.1.11.11

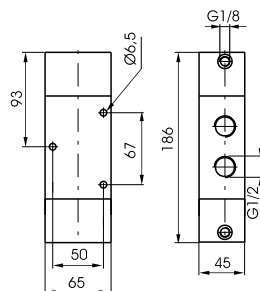
**Operational characteristics**

|   |  |
|---|--|
| Fluid   | Filtered air. No lubrication needed, if applied it shall be continuous |
| Max. working pressure (bar)                   | 10   |
| Temperature °C                                | -5 ... +70   |
| Flow rate at 6 bar with $\Delta p=1$ (NI/min) | 3500   |
| Orifice size (mm)                             | 15   |
| Working ports size                            | G1/2"  |
| Pilot ports size                              | G1/8"  |

|      |                     |
|------|---------------------|
| TYPE |                     |
| 32   | 3 ways, 2 positions |
| 52   | 5 ways, 2 positions |



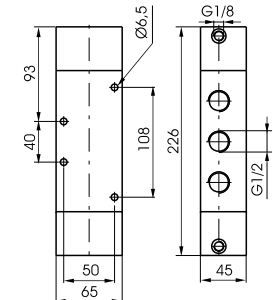
3/2 ways



Weight 1350 g  
Minimum pilot pressure 2 bar

212.32.11.11

5/2 ways



Weight 1630 g  
Minimum pilot pressure 2 bar

212.52.11.11

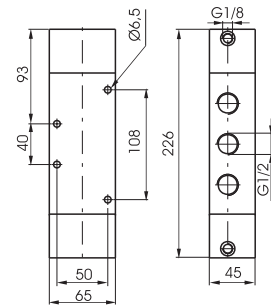
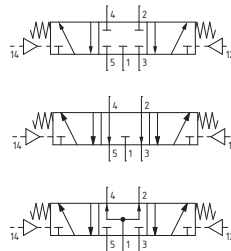
1 AIR DISTRIBUTION

**Pneumatic-Pneumatic 5/3**

Coding: 212.53.11.11

| Operational characteristics                   |  |
|---|--|
| Fluid   | Filtered air. No lubrication needed, if applied it shall be continuous |
| Max. working pressure (bar)                   | 10   |
| Temperature °C                                | -5 ... +70   |
| Flow rate at 6 bar with $\Delta p=1$ (NI/min) | 3000   |
| Orifice size (mm)                             | 15   |
| Working ports size                            | G1/2"  |
| Pilot ports size                              | G1/8"  |

| FUNCTION |                        |
|----------|------------------------|
| Ⓢ        | 31 = Closed centres    |
|          | 32 = Open centres      |
|          | 33 = Pressured centres |



Weight 1650 g  
Minimum pilot pressure 3 bar



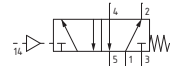
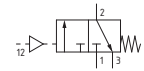
**Pneumatic - Spring**

Coding: 212/2.11.1

**Operational characteristics**

|   |  |
|---|--|
| Fluid   | Filtered air. No lubrication needed, if applied it shall be continuous |
| Max. working pressure (bar)                   | 10   |
| Temperature °C                                | -5 ... +70   |
| Flow rate at 6 bar with $\Delta p=1$ (NI/min) | 3600   |
| Orifice size (mm)                             | 15   |
| Working ports size                            | G1/2"  |
| Pilot ports size                              | G1/8"  |

|                          |  |
|--------------------------|--|
| TYPE                     |  |
| 32 = 3 ways, 2 positions |  |
| 52 = 5 ways, 2 positions |  |

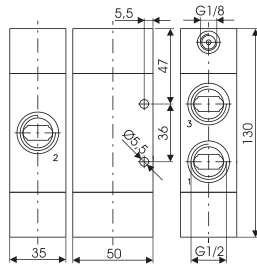


3/2 ways



Weight 524 g  
Minimum pilot pressure 2,5 bar

212/2.32.11.1

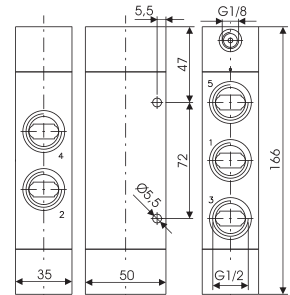


5/2 ways



Weight 644 g  
Minimum pilot pressure 2,5 bar

212/2.52.11.1



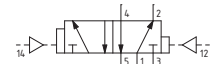
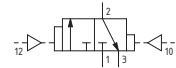
**Pneumatic - Differential**

Coding: 212/2.11.12

**Operational characteristics**

|   |  |
|---|--|
| Fluid   | Filtered air. No lubrication needed, if applied it shall be continuous |
| Max. working pressure (bar)                   | 10   |
| Temperature °C                                | -5 ... +70   |
| Flow rate at 6 bar with $\Delta p=1$ (NI/min) | 3600   |
| Orifice size (mm)                             | 15   |
| Working ports size                            | G1/2"  |
| Pilot ports size                              | G1/8"  |

|                          |  |
|--------------------------|--|
| TYPE                     |  |
| 32 = 3 ways, 2 positions |  |
| 52 = 5 ways, 2 positions |  |

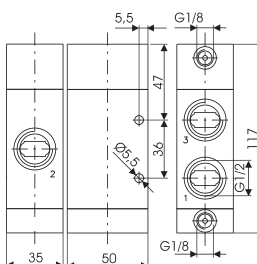


3/2 ways



Weight 464 g  
Minimum pilot pressure 2,5 bar

212/2.32.11.12

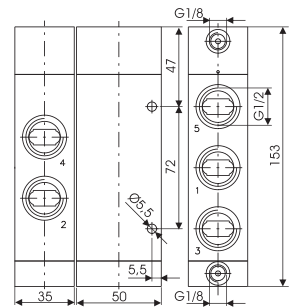


5/2 ways



Weight 586 g  
Minimum pilot pressure 2,5 bar

212/2.52.11.12



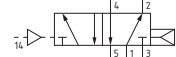
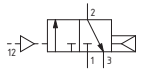
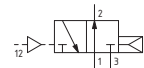
**Pneumatic-Differential (Self feeding)**

Coding: 212/2.11.12/1

**Operational characteristics**

|   |  |
|---|--|
| Fluid   | Filtered air. No lubrication needed, if applied it shall be continuous |
| Max. working pressure (bar)                   | 10   |
| Temperature °C                                | -5 ... +70   |
| Flow rate at 6 bar with $\Delta p=1$ (NI/min) | 3600   |
| Orifice size (mm)                             | 15   |
| Working ports size                            | G1/2"  |
| Pilot ports size                              | G1/8"  |

|   |  |
|---|--|
| TYPE                                    |  |
| 32 = 3 ways, 2 positions                |  |
| 52 = 5 ways, 2 positions                |  |
| FUNCTION                                |  |
| 1.C = Normally closed (only for 3 ways) |  |
| 1.A = Normally open (only for 3 ways)   |  |
| 1 = Self feeding (only for 5 ways)      |  |

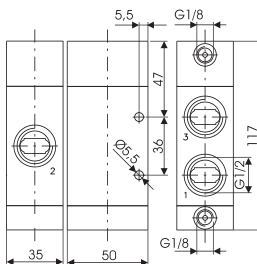


3/2 ways



Weight 466 g  
Minimum pilot pressure 2,5 bar

212/2.32.11.12/1

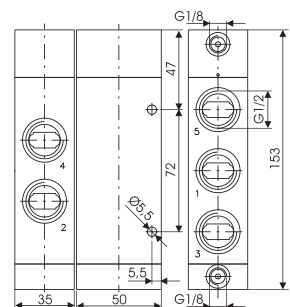


5/2 ways



Weight 588 g  
Minimum pilot pressure 2,5 bar

212/2.52.11.12/1



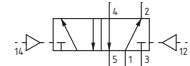
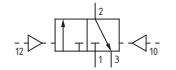
AIR DISTRIBUTION

**Pneumatic-Pneumatic**

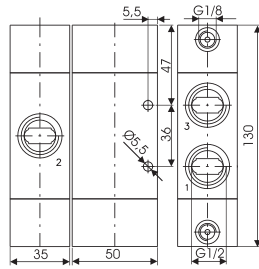
Coding: 212/2.1.11.11

| Operational characteristics                   |  |
|---|--|
| Fluid   | Filtered air. No lubrication needed, if applied it shall be continuous |
| Max. working pressure (bar)                   | 10   |
| Temperature °C                                | -5 ... +70   |
| Flow rate at 6 bar with $\Delta p=1$ (NI/min) | 3600   |
| Orifice size (mm)                             | 15   |
| Working ports size                            | G1/2"  |
| Pilot ports size                              | G1/8"  |

| TYPE |                          |
|------|--------------------------|
| 1    | 32 = 3 ways, 2 positions |
|      | 52 = 5 ways, 2 positions |



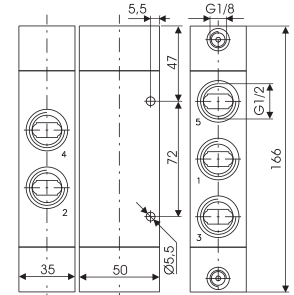
3/2 ways



Weight 518 g  
Minimum pilot pressure 2,5 bar

212/2.32.11.11

5/2 ways



Weight 640 g  
Minimum pilot pressure 2,5 bar

212/2.52.11.11

1

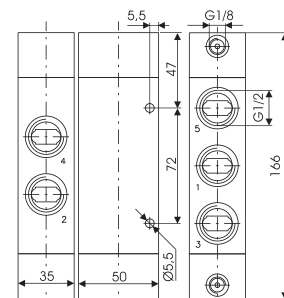
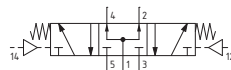
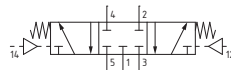
AIR DISTRIBUTION

**Pneumatic-Pneumatic 5/3**

Coding: 212/2.53.F.11.11

| Operational characteristics                   |  |
|---|--|
| Fluid   | Filtered air. No lubrication needed, if applied it shall be continuous |
| Max. working pressure (bar)                   | 10   |
| Temperature °C                                | -5 ... +70   |
| Flow rate at 6 bar with $\Delta p=1$ (NI/min) | 3300   |
| Orifice size (mm)                             | 15   |
| Working ports size                            | G1/2"  |
| Pilot ports size                              | G1/8"  |

| FUNCTION |                        |
|----------|------------------------|
| F        | 31 = Closed centres    |
|          | 32 = Open centres      |
|          | 33 = Pressured centres |



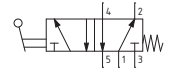
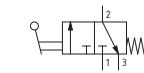
Weight 684 g  
Minimum pilot pressure 3 bar

**Lever lateral - Spring**

Coding: 211.●.9.1

| Operational characteristics           |  |
|---------------------------------------|--|
| Fluid                                 | Filtered air. No lubrication needed, if applied it shall be continuous |
| Max. working pressure (bar)           | 10   |
| Temperature °C                        | -5 ... +70   |
| Flow rate at 6 bar with Δp=1 (NI/min) | 6500   |
| Orifice size (mm)                     | 20   |
| Working ports size                    | G1"  |

| TYPE |                          |
|------|--------------------------|
| ●    | 32 = 3 ways, 2 positions |
| ●    | 52 = 5 ways, 2 positions |

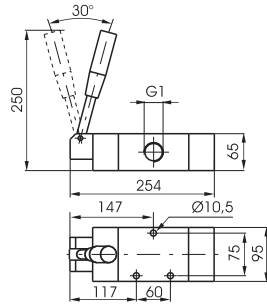


3/2 ways



Weight 4300 g

211.32.9.1

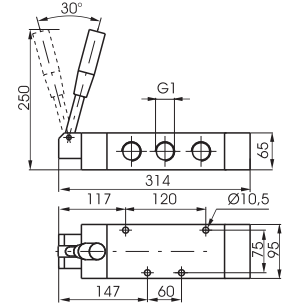


5/2 ways



Weight 4900 g

211.52.9.1

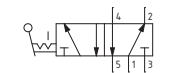
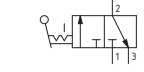


**Lever lateral 2 positions**

Coding: 211.●.9

| Operational characteristics           |  |
|---------------------------------------|--|
| Fluid                                 | Filtered air. No lubrication needed, if applied it shall be continuous |
| Max. working pressure (bar)           | 10   |
| Temperature °C                        | -5 ... +70   |
| Flow rate at 6 bar with Δp=1 (NI/min) | 6500   |
| Orifice size (mm)                     | 20   |
| Working ports size                    | G1"  |

| TYPE |                          |
|------|--------------------------|
| ●    | 32 = 3 ways, 2 positions |
| ●    | 52 = 5 ways, 2 positions |

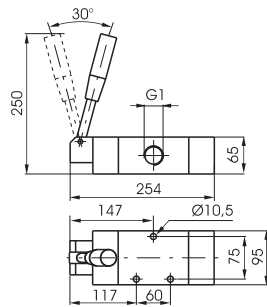


3/2 ways



Weight 4300 g

211.32.9

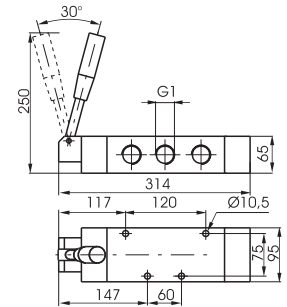


5/2 ways



Weight 4900 g

211.52.9



**Lever lateral spring centre 3 positions**

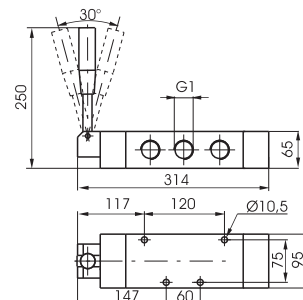
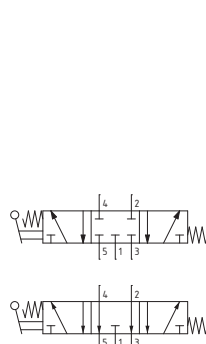
Coding: 211.53.●.9.1

| Operational characteristics           |  |
|---------------------------------------|--|
| Fluid                                 | Filtered air. No lubrication needed, if applied it shall be continuous |
| Max. working pressure (bar)           | 10   |
| Temperature °C                        | -5 ... +70   |
| Flow rate at 6 bar with Δp=1 (NI/min) | 6500   |
| Orifice size (mm)                     | 20   |
| Working ports size                    | G1"  |

| FUNCTION |                     |
|----------|---------------------|
| ●        | 31 = Closed centres |
| ●        | 32 = Open centres   |



Weight 5000 g



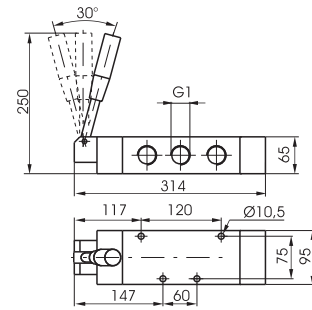
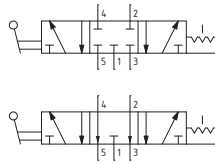
AIR DISTRIBUTION

**Lever lateral 3 positions detent**

Coding: 211.53.ⓕ.9

| Operational characteristics                  |  |
|--|--|
| Fluid  | Filtered air. No lubrication needed, if applied it shall be continuous |
| Max. working pressure (bar)                  | 10   |
| Temperature °C                               | -5 ... +70   |
| Flow rate at 6 bar with $\Delta p=1$ (l/min) | 6500   |
| Orifice size (mm)                            | 20   |
| Working ports size                           | G1"  |

| FUNCTION |                     |
|----------|---------------------|
| ⓕ        | 31 = Closed centres |
|          | 32 = Open centres   |



Weight 5000 g



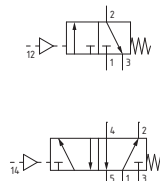
1 AIR DISTRIBUTION

**Pneumatic - Spring**

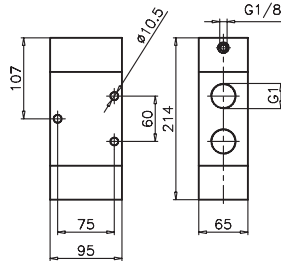
Coding: 211.11.1

| Operational characteristics                   |  |
|---|--|
| Fluid   | Filtered air. No lubrication needed, if applied it shall be continuous |
| Max. working pressure (bar)                   | 10   |
| Temperature °C                                | -5 ... +70   |
| Flow rate at 6 bar with $\Delta p=1$ (NI/min) | 6500   |
| Orifice size (mm)                             | 20   |
| Working ports size                            | G1"  |
| Pilot ports size                              | G1/8"  |

| TYPE |                     |
|------|---------------------|
| 32   | 3 ways, 2 positions |
| 52   | 5 ways, 2 positions |



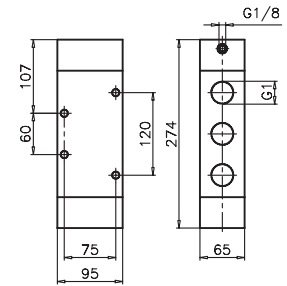
3/2 ways



Weight 3330 g  
Minimum pilot pressure 2,5 bar

211.32.11.1

5/2 ways



Weight 4200 g  
Minimum pilot pressure 2,5 bar

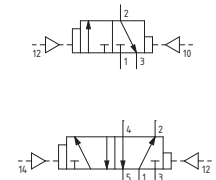
211.52.11.1

**Pneumatic - Differential**

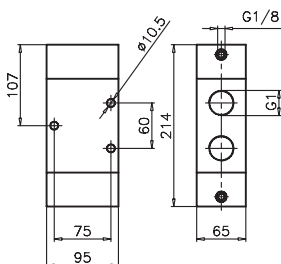
Coding: 211.11.12

| Operational characteristics                   |  |
|---|--|
| Fluid   | Filtered air. No lubrication needed, if applied it shall be continuous |
| Max. working pressure (bar)                   | 10   |
| Temperature °C                                | -5 ... +70   |
| Flow rate at 6 bar with $\Delta p=1$ (NI/min) | 6500   |
| Orifice size (mm)                             | 20   |
| Working ports size                            | G1"  |
| Pilot ports size                              | G1/8"  |

| TYPE |                     |
|------|---------------------|
| 32   | 3 ways, 2 positions |
| 52   | 5 ways, 2 positions |



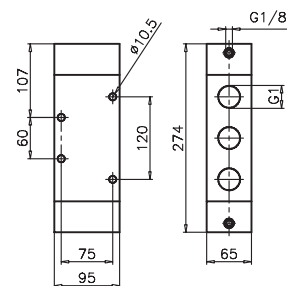
3/2 ways



Weight 3330 g  
Minimum pilot pressure 2,5 bar

211.32.11.12

5/2 ways



Weight 4200 g  
Minimum pilot pressure 2,5 bar

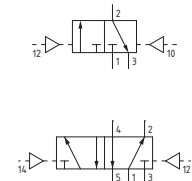
211.52.11.12

**Pneumatic-Pneumatic**

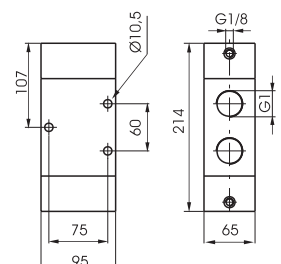
Coding: 211.11.11

| Operational characteristics                   |  |
|---|--|
| Fluid   | Filtered air. No lubrication needed, if applied it shall be continuous |
| Max. working pressure (bar)                   | 10   |
| Temperature °C                                | -5 ... +70   |
| Flow rate at 6 bar with $\Delta p=1$ (NI/min) | 6500   |
| Orifice size (mm)                             | 20   |
| Working ports size                            | G1"  |
| Pilot ports size                              | G1/8"  |

| TYPE |                     |
|------|---------------------|
| 32   | 3 ways, 2 positions |
| 52   | 5 ways, 2 positions |



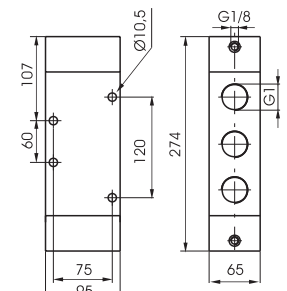
3/2 ways



Weight 3330 g  
Minimum pilot pressure 2 bar

211.32.11.11

5/2 ways



Weight 4200 g  
Minimum pilot pressure 2 bar

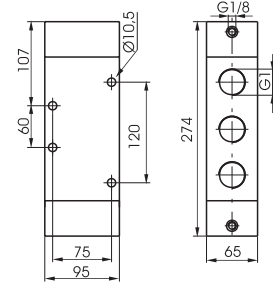
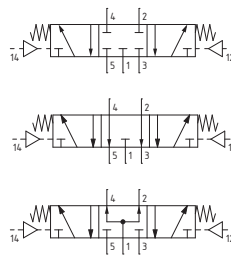
211.52.11.11

**Pneumatic-Pneumatic 5/3**

Coding: 211.53.Ⓢ.11.11

| Operational characteristics                  |  |
|--|--|
| Fluid  | Filtered air. No lubrication needed, if applied it shall be continuous |
| Max. working pressure (bar)                  | 10   |
| Temperature °C                               | -5 ... +70   |
| Flow rate at 6 bar with $\Delta p=1$ (l/min) | 6500   |
| Orifice size (mm)                            | 20   |
| Working ports size                           | G1"  |
| Pilot ports size                             | G1/8"  |

| FUNCTION |                        |
|----------|------------------------|
| Ⓢ        | 31 = Closed centres    |
|          | 32 = Open centres      |
|          | 33 = Pressured centres |



Weight 4200 g  
Minimum pilot pressure 3 bar