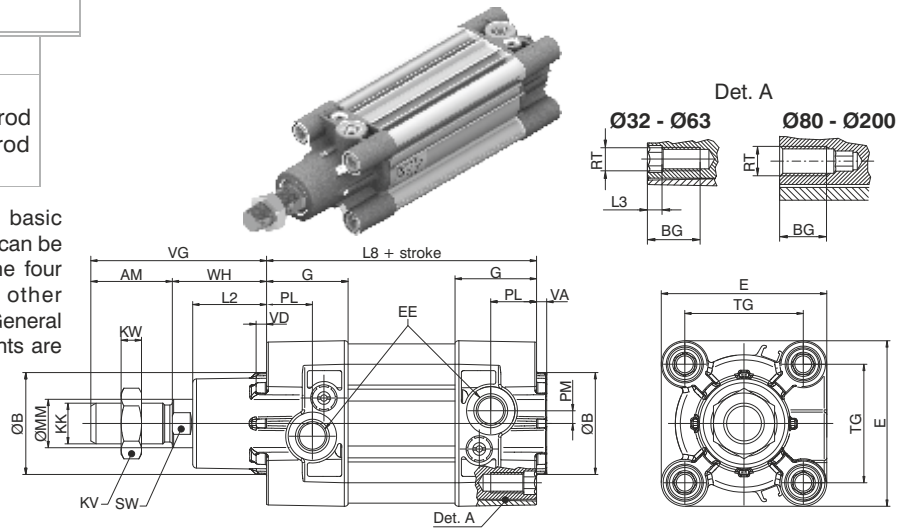


Basic version "01"

Ordering code

- 1390.Ø.stroke.01** Magnetic chromed rod
- 1391.Ø.stroke.01** Magnetic stainless steel rod
- 1392.Ø.stroke.01** Non magnetic chromed rod

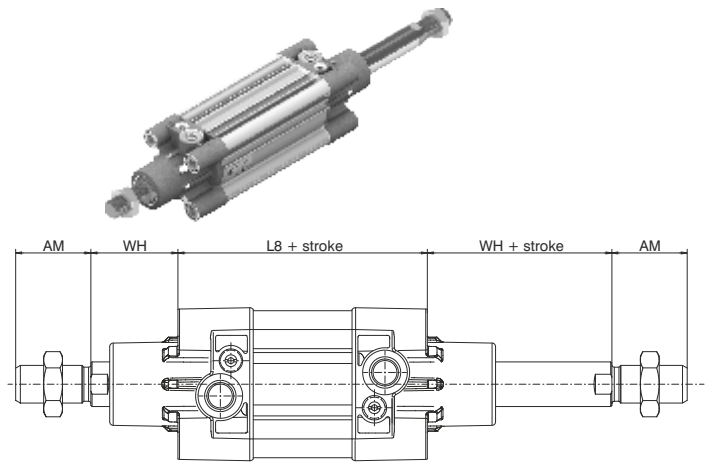
This is the configuration representing the basic cylinder according to ISO-VDMA standards. It can be directly anchored on machine parts using the four threads on the end cover screws. For other applications see "Cylinder section" on the General Catalogue, where different types of attachments are shown.



Push/pull version "02"

Ordering code

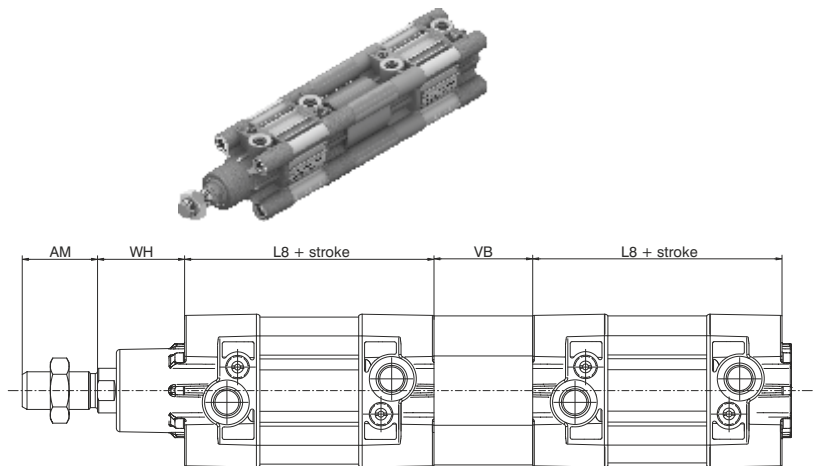
- 1390.Ø.stroke.02** Magnetic chromed rod
- 1391.Ø.stroke.02** Magnetic stainless steel rod
- 1392.Ø.stroke.02** Non magnetic chromed rod



Tandem push with common rods "G"

Ordering code

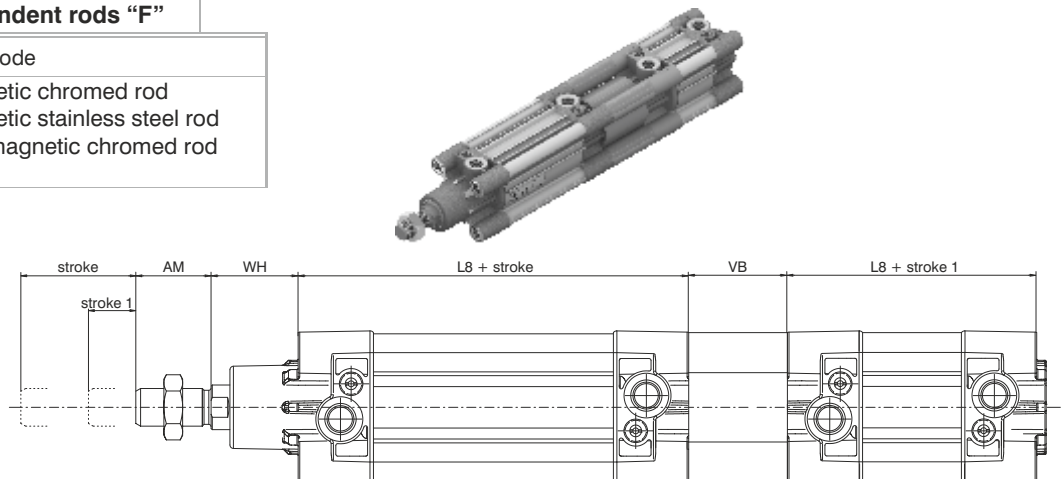
- 1390.Ø.stroke.G** Magnetic chromed rod
- 1391.Ø.stroke.G** Magnetic stainless steel rod
- 1392.Ø.stroke.G** Non magnetic chromed rod



Tandem push with independent rods "F"

Ordering code

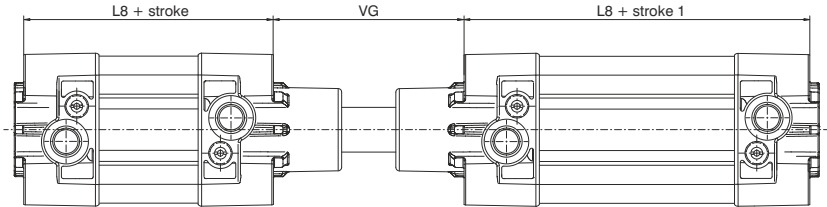
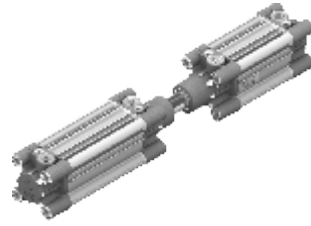
- 1390.Ø.stroke.stroke1.F** Magnetic chromed rod
- 1391.Ø.stroke.stroke1.F** Magnetic stainless steel rod
- 1392.Ø.stroke.stroke1.F** Non magnetic chromed rod



Opposed tandem with common rod "D"

Ordering code

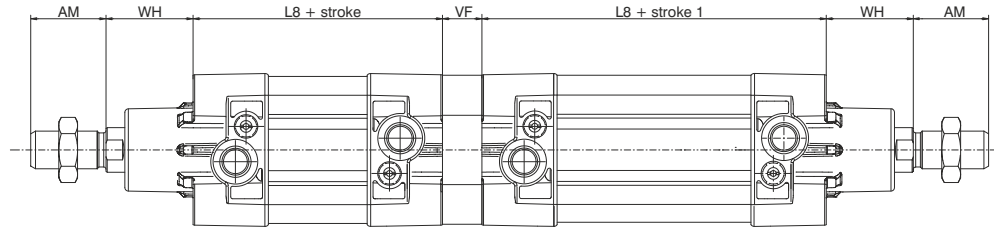
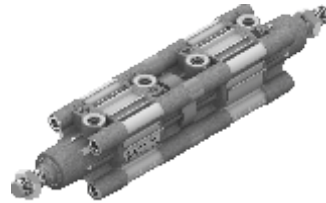
- 1390.Ø.stroke.stroke1.D Magnetic chromed rod
- 1391.Ø.stroke.stroke1.D Magnetic stainless steel rod
- 1392.Ø.stroke.stroke1.D Non magnetic chromed rod



Tandem with opposed rods "E"

Ordering code

- 1390.Ø.stroke.stroke1.E Magnetic chromed rod
- 1391.Ø.stroke.stroke1.E Magnetic stainless steel rod
- 1392.Ø.stroke.stroke1.E Non magnetic chromed rod



Version with PUR seals

Variants

Ordering code

- 139_Ø.stroke._.P = Version with PUR seals
- 139_Ø.stroke._.K = Version with aluminium piston (from Ø32 to Ø100)
- 139_Ø.stroke._.PK = Version with PUR seals and aluminium piston (from Ø32 to Ø100)
- 139_Ø.stroke._.V = Version with FPM seals and aluminium piston

Table of dimensions

Bore	32	40	50	63	80	100	125	160	200	
AM	22	24	32	32	40	40	54	72	72	
B (d 11)	30	35	40	45	45	55	60	65	75	
BG	16	16	18	18	16	16	21	25	25	
E	47	54	65	76	95	113	138	180	216	
EE	G 1/8"	G 1/4"	G 1/4"	G 3/8"	G 3/8"	G 1/2"	G 1/2"	G 3/4"	G 3/4"	
G	29.5	33	32	36	38.5	41.5	48	49	49	
KK	M10X1.25	M12X1.25	M16x1.5	M16x1.5	M20x1.5	M20x1.5	M27x2	M36x2	M36x2	
KV	17	19	24	24	30	30	41	55	55	
KW	6	7	8	8	9	9	12	18	18	
L2	19	22	29	29	35	36	45	50	60	
L3	4	4	5	5	/	/	/	/	/	
L8	94	105	106	121	128	138	160	180	180	
MM	12	16	20	20	25	25	32	40	40	
PL	13	16	18	18	16	18	25	26	25	
PM	3	4	5	4.5	2.5	6	8	11	11	
RT	M6	M6	M8	M8	M10	M10	M12	M16	M16	
SW	10	13	17	17	22	22	27	36	36	
TG	32.5	38	46.5	56.5	72	89	110	140	175	
VA	4	4	4	4	4	4	6	6	6	
VB	33	41	51	51	65	71	75	70	75	
VD	4	4	4	4	4	4	6	6	6	
VF	12	12	16	16	20	20	25	30	30	
VG	48	54	69	69	86	91	119	152	167	
WH	26	30	37	37	46	51	65	80	95	
Weight	stroke 0	460	650	1030	1360	2180	2890	5700	11200	14900
gr.	every 10 mm	23	32	45	49	75	81	130	195	245