

## Function fittings

# Series ISP



### Ordering code

**ISPC 04 G04**

#### MODEL TYPE

- ISPC** = Straight male tapered "stop fitting"
- ISPC-G** = Straight male parallel "stop fitting"
- ISPU** = Stop fitting straight connector
- ISPL** = Elbow male tapered "stop fitting"
- ISPL-G** = Elbow male parallel "stop fitting"

#### TUBE CONNECTION

4 ... 12 = Tube Diameter Ø 4; 6; 8; 10; 12 mm

#### THREADED CONNECTION

- M5** = M5x0,8
- M6** = M6x1
- 01** = R1/8" tapered
- 02** = R1/4" tapered
- 03** = R3/8" tapered
- 04** = R1/2" tapered
- G01** = G1/8" parallel
- G02** = G1/4" parallel
- G03** = G3/8" parallel
- G04** = G1/2" parallel

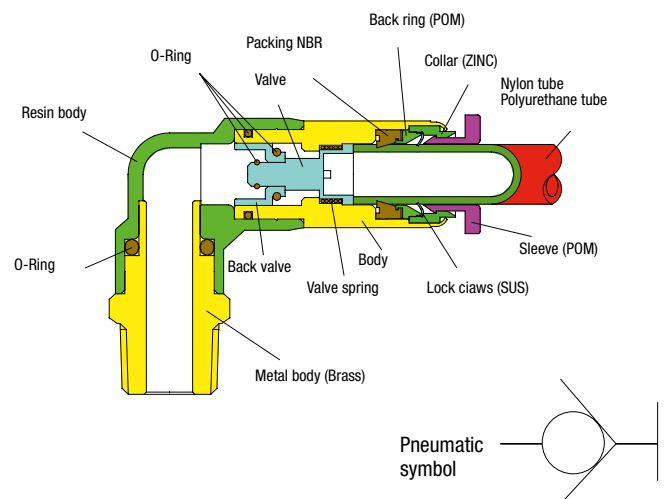
## Characteristics

Air flows is stopped from the tube if it is released, the air flows again only after the tube is connected

## Applications

Used in the place where tube frequently changes

## Structure chart

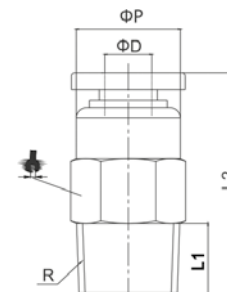


## Technical sheet

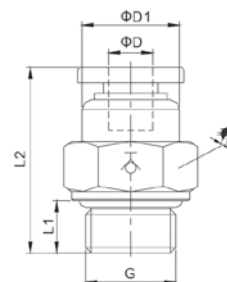
FLUID	Air
OPERATION PRESSURE	0,1-1,0Mpa (150psi)
NEGATIVE PRESSURE	Please contact our Technical Dept.
OPERATING TEMPERATURE	0-60 °C (32-140 °F)
APPLICABLE TUBE	Polyurethane, Polyamide and Nylon

**ART. ISPC**
**Straight male tapered stop fitting**

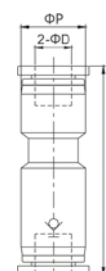

COD.	ØD	R	L1	L2	ØP			
ISPC04-01	4	1/8	7,5	27,5	10	10	1	9,30
ISPC06-01	6	1/8	7,5	27,0	12	12	1	11,20
ISPC06-02	6	1/4	9,5	27,0	12	14	1	13,50
ISPC08-01	8	1/8	7,5	29,0	14	14	1	14,40
ISPC08-02	8	1/4	9,5	29,0	14	14	1	16,10
ISPC08-03	8	3/8	10,5	29,0	14	17	1	20,40
ISPC10-02	10	1/4	9,5	37,0	17	17	1	18,80
ISPC10-03	10	3/8	10,5	37,0	17	17	1	24,60
ISPC10-04	10	1/2	13,5	37,0	17	21	1	28,50
ISPC12-02	12	1/4	9,5	38,0	20	21	1	30,20
ISPC12-03	12	3/8	10,5	38,0	20	21	1	31,70
ISPC12-04	12	1/2	13,5	38,0	20	21	1	35,50


**ART. ISPC-G**
**Straight male parallel stop fitting**


COD.	ØD	G	ØD1	L1	L2			
ISPC04-G01	4	1/8	10	5,5	27,5	14	1	9,30
ISPC06-G01	6	1/8	12	5,5	27	14	1	11,20
ISPC06-G02	6	1/4	12	7,5	27	17	1	13,50
ISPC08-G01	8	1/8	14	5,5	29	14	1	14,40
ISPC08-G02	8	1/4	14	7,5	29	17	1	16,10
ISPC08-G03	8	3/8	14	7,5	29	20	1	20,40
ISPC10-G02	10	1/4	17	7,5	37	17	1	18,80
ISPC10-G03	10	3/8	17	7,5	37	20	1	24,60
ISPC10-G04	10	1/2	17	10	37	24	1	28,50
ISPC12-G02	12	1/4	20	7,5	38	21	1	30,20
ISPC12-G03	12	3/8	20	7,5	38	21	1	31,70
ISPC12-G04	12	1/2	20	10	38	24	1	35,50


**ART. ISPU**
**Stop fitting straight connector**


COD.	ØD	ØP	L		
ISPU04	4	13,0	47,0	1	16,50
ISPU06	6	13,0	45,0	1	13,50
ISPU08	8	15,0	49,5	1	17,00
ISPU10	10	19,0	63,0	1	35,00
ISPU12	12	21,5	66,5	1	42,00

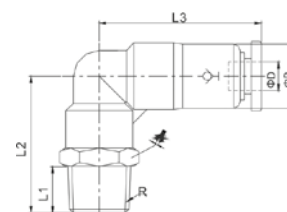


ART. **ISPL**

**Elbow male tapered stop fitting**



COD.	ØD	R	L1	L2	L3	ØP			
ISPL04-M5	4	M5	3,5	21,3	31,0	13,0	10	1	12,00
ISPL04-M6	4	M6	4,0	21,8	31,0	13,0	10	1	12,00
ISPL04-01	4	1/8	7,5	26,5	31,0	13,0	10	1	14,00
ISPL06-M5	6	M5	3,5	21,7	29,4	13,0	12	1	13,00
ISPL06-M6	6	M6	4,0	22,2	29,4	13,0	12	1	13,00
ISPL06-01	6	1/8	7,5	26,5	30,0	13,0	12	1	20,20
ISPL06-02	6	1/4	9,5	29,0	30,0	13,0	14	1	22,40
ISPL08-01	8	1/8	7,5	29,5	33,5	14,5	14	1	24,60
ISPL08-02	8	1/4	9,5	31,5	33,5	14,5	14	1	29,00
ISPL08-03	8	3/8	10,5	33,0	33,5	14,5	17	1	31,00
ISPL10-02	10	1/4	9,5	37,0	43,2	18,4	17	1	33,00
ISPL10-03	10	3/8	10,5	38,0	43,2	18,4	17	1	35,00
ISPL10-04	10	1/2	13,5	41,5	43,2	18,4	21	1	37,40
ISPL12-02	12	1/4	9,5	38,5	46,7	21,0	21	1	42,00
ISPL12-03	12	3/8	10,5	39,5	46,7	21,0	21	1	45,00
ISPL12-04	12	1/2	13,5	42,5	46,7	21,0	21	1	49,00



ART. **ISPL-G**

**Elbow male parallel stop fitting**



COD.	ØD	R	L1	L2	L3	ØP			
ISPL04-G01	4	1/8	5,5	26,5	31,7	13,0	14	1	14,00
ISPL06-G01	6	1/8	5,5	26,5	30,0	13,0	14	1	20,20
ISPL06-G02	6	1/4	7,5	29,0	30,0	13,0	17	1	22,40
ISPL08-G01	8	1/8	5,5	29,0	33,5	14,5	14	1	24,60
ISPL08-G02	8	1/4	7,5	31,5	33,5	14,5	17	1	29,00
ISPL08-G03	8	3/8	7,5	32,0	33,5	14,5	20	1	31,00
ISPL10-G02	10	1/4	7,5	37,0	43,2	18,4	17	1	33,00
ISPL10-G03	10	3/8	7,5	37,0	43,2	18,4	20	1	35,00
ISPL10-G04	10	1/2	10,0	40,5	43,2	18,4	24	1	37,40
ISPL12-G02	12	1/4	7,5	38,5	46,7	21,0	21	1	42,00
ISPL12-G03	12	3/8	7,5	38,5	46,7	21,0	21	1	45,00
ISPL12-G04	12	1/2	10,0	41,5	46,7	21,0	24	1	49,00

