

## Brass high pressure push-in fittings

### HP series



The High Pressure brass push-in fittings series have been developed for use with oils and greases in lubrication and greasing systems and can be used up to a maximum pressure of 250 bar thanks to a special crimping gripper. They are suitable for rigid and semi-rigid hoses commonly used in lubrication.

#### Ordering code

**01 HP 04 018C**

#### MODEL TYPE

- 01 = Straight male push-in fitting
- 15 = Swivel elbow push-in fitting

#### SERIES

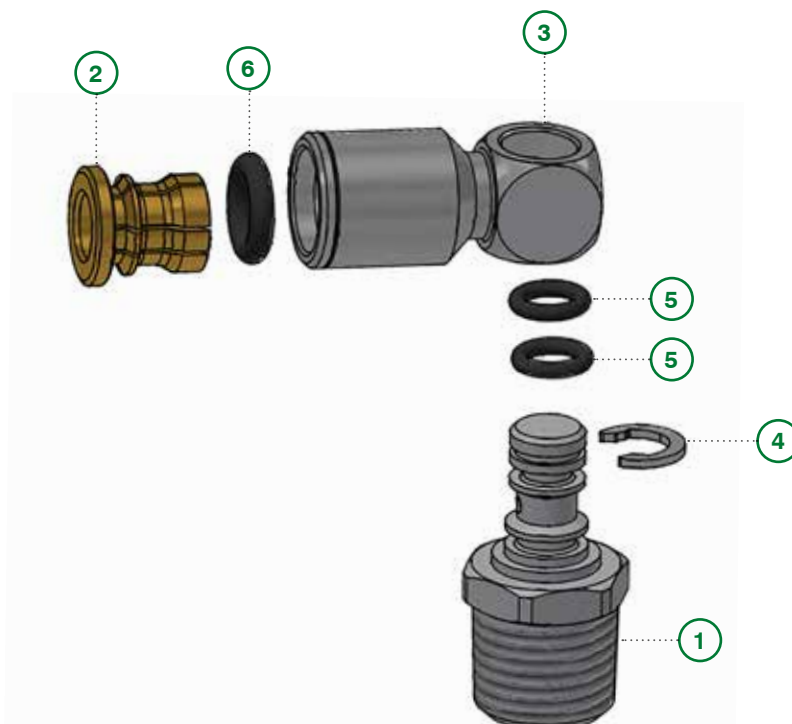
- HP = High pressure push-in fitting

#### TUBE CONNECTION

- 04 = Tube diameter (mm)
- 06 = Tube diameter (mm)

#### THREADED CONNECTION

- 018C = Gc 1/8" (UNI ISO7/1)
- 014C = Gc 1/4" (UNI ISO7/1)
- 0516 = 5/16" 24UNF
- 675D = M6x0,75 Parallel
- 0061 = M6x1 Tapered
- 0081 = M8x1 Tapered
- 081D = M8x1 Parallel
- 0101 = M10x1 Tapered
- 101D = M10x1 Parallel
- 0121 = M12x1 Tapered
- 0010 = M10x1 with O-Ring
- 0018 = G1/8" with O-Ring



#### Components

- 1 Stem for swivel banjo
- 2 Crimping gripper
- 3 Swivel banjo
- 4 Stopping ring
- 5 OR
- 6 OR



## Technical sheet

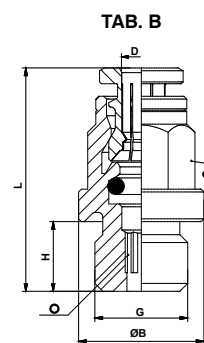
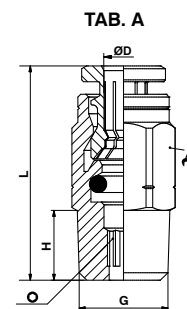
<b>FLUIDS</b>		Oil and Grease for lubrication.
<b>APPLICATIONS</b>		Centralised Lubrication and Greasing Systems such as: industrial automation, heavy industry, heavy transport, construction machinery and agricultural vehicles.
<b>WORKING PRESSURE</b>		0 ... 150 Bar
<b>MAXIMUM PRESSURE*</b>		250 Bar
<b>RECOMMENDED TUBES**</b>		PA6-6; High pressure hose with metal end terminal.
<b>TUBE TOLERANCES</b>		±0,07 mm until Ø6 mm
<b>TEMPERATURE</b>		-20°C ... +80°C
<b>THREAD TYPE</b>		M5; M6x0,75; M6x1; M8x1; M10x1; M12x1. ISO7/1 (BSPT): R1/8" - R1/4" ISO 228/1 (BSPP) G1/8" - G1/4"
<b>MATERIALS</b>	Body	Nickel plated brass
	Spring	Brass
	Seals	NBR
<b>IMPORTANT NOTE</b>	*	The maximum working pressure value is influenced by the type of hose used and the temperature, which can significantly reduce the burst pressure of the hose.
	**	If the fitting is used with a metal terminal, in case of disassembly, it is not recommended to use the same fitting with plastic pipes.

ART. **01HP**

**Straight male**



COD.	ØD	G	ØB	H	L	Tav.				
01HP04675D	4	M6x0,75 Parallel	*	6,0	25,0	A	10	2,5	100	10,00
01HP040061	4	M6x1	*	8,0	27,0	A	10	2,5	100	10,00
01HP040081	4	M8x1	*	8,0	24,0	A	10	3,0	100	10,00
01HP040516	4	5/16"	*	8,0	24,0	A	10	3,0	100	10,00
01HP040101	4	M10x1	*	8,0	23,0	A	11	3,0	100	10,00
01HP040010	4	M10x1	13,5	7,5	24,0	B	10	3,0	100	10,00
01HP040018	4	G1/8"	13,5	7,5	24,0	B	10	3,0	100	12,00
01HP04018C	4	R1/8"	*	7,5	23,0	A	10	3,0	100	10,00
01HP060061	6	M6x1	*	8,0	29,0	A	12	2,5	100	10,00
01HP060081	6	M8x1	*	8,0	29,0	A	12	4,0	100	14,00
01HP060516	6	5/16"	*	8,0	29,0	A	12	4,0	100	14,00
01HP060101	6	M10x1	*	8,0	25,0	A	12	4,0	100	10,00
01HP060010	6	M10x1	13,5	7,5	27,0	B	12	4,0	100	15,00
01HP060121	6	M12x1	*	9,0	26,0	A	13	4,0	100	20,00
01HP06018C	6	R1/8"	*	7,5	25,0	A	12	4,0	100	10,00
01HP06014C	6	R1/4"	*	11,0	27,0	A	14	4,0	100	20,00
01HP060018	6	G1/8"	13,5	7,5	27,0	B	12	4,0	100	14,00



ART. **15HP**

**Swivel elbow**



COD.	ØD	G	ØB	H	L	L1	L2	Tav.			
15HP04675D	4	M6x0,75 Parallel	10,0	6,0	23,0	24,0	13,0	A	6	100	18,00
15HP040061	4	M6x1 Tapered	10,0	8,0	23,0	26,0	13,0	A	6	100	20,00
15HP040081	4	M8x1 Tapered	10,0	8,0	23,0	26,0	15,0	A	6	100	19,00
15HP040516	4	5/16"	10,0	8,0	23,0	26,0	15,0	A	6	100	19,00
15HP040101	4	M10x1 Tapered	10,0	8,0	23,0	26,0	15,0	A	6	100	20,00
15HP040010	4	M10x1 Parallel	13,0	7,5	23,0	28,0	17,0	B	6	100	22,00
15HP04018C	4	R1/8"	10,0	7,5	23,0	25,0	14,0	A	6	100	20,00
15HP040018	4	G1/8"	13,0	7,5	23,0	27,0	16,0	B	6	100	20,00
15HP060061	6	M6x1 Tapered	10,0	8,0	25,0	26,0	15,0	A	6	100	20,00
15HP060081	6	M8x1 Tapered	10,0	8,0	25,0	26,0	15,0	A	6	100	20,00
15HP060516	6	5/16"	10,0	8,0	25,0	26,0	15,0	A	6	100	20,00
15HP060101	6	M10x1 Tapered	10,0	8,0	25,0	26,0	15,0	A	6	100	20,00
15HP060010	6	M10x1 Parallel	13,0	7,5	25,0	28,0	17,0	B	6	100	20,00
15HP060121	6	M12x1 Tapered	13,0	8,0	25,0	26,0	15,0	A	6	100	24,00
15HP06018C	6	R1/8"	10,0	7,5	25,0	25,0	14,0	A	6	100	20,00
15HP060018	6	G1/8"	13,0	7,5	25,0	27,0	16,0	B	6	100	23,00
15HP06014C	6	R1/4"	*	11,0	25,0	28,0	20,5	A	14	100	27,00

