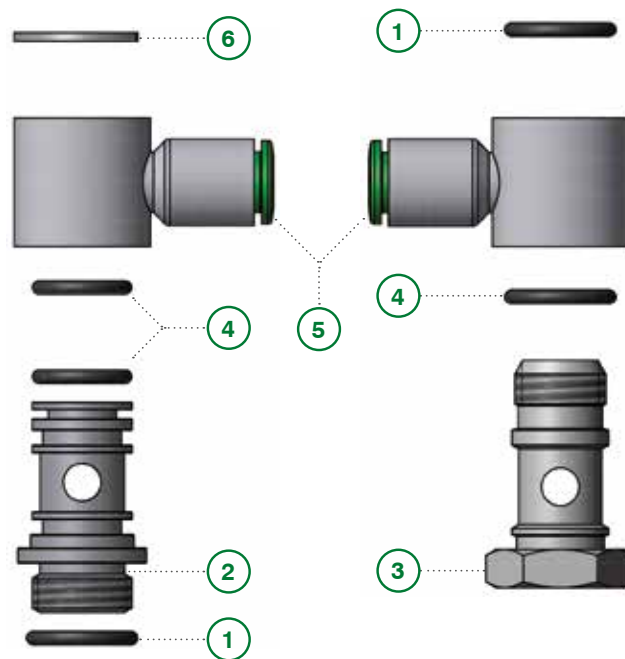


Stems for push-in fittings

Series 400-15-33



Components

- | | |
|------------------------|-------------------------|
| 1 External O-ring | 4 Internal O-ring |
| 2 Swivel stem 15A type | 5 Swivel banjo T13 type |
| 3 Fix stem 407 type | 6 Elastic ring |

Technical sheet

FLUIDS		Compressed air, water up to 100 °C (for different fluid please contact our Technical Dept.)
APPLICATIONS		Pneumatic circuits, low pressure hydraulic applications, according to DIN 3861-3870 norms
TEMPERATURE AND PRESSURE		Temperatures and pressures usually depend by the technical features of the employed tubes
THREAD TYPE		BSP parallell UNI-ISO 228 BSP tapered UNI-ISO 7 Metric ISO/R 262
MATERIALS	Body	Brass UNI EN 12164 CW614N
	Seals	NBR 70 DWGV-EN549 UL157
	Washers	Nylon/Aluminium



Stem - banjo couplings

Banjo code	Type of stem								
	407	407V	408	408V	15A	15AL	33A	33AL	34A

Push-in fittings - Series RAP - art. 13

1304M5	●				●				
130418	●		●		●		●		●
130618	●		●		●		●		●
130614	●		●		●		●		●
130818	●		●		●		●		●
130814	●		●		●		●		●
130838	●		●		●				
131014	●		●		●		●		●
131038	●		●		●				
131214	●		●		●		●		●
131238	●		●		●				
131212			●		●				

Push-in fittings - Series RAP - art. 14

140618	●		●		●		●		●
140818	●		●		●		●		●
140814	●		●		●		●		●
140838	●		●		●				
141014	●		●		●		●		●
141038	●		●		●				

Push-in fittings - Series Tecnorap - art. T13

T1304M5.						●		●	
T130418.	●		●		●		●		●
T130618.	●		●		●		●		●
T130614.	●		●		●		●		●
T130818.	●		●		●		●		●
T130814.	●		●		●		●		●
T130838.	●		●		●				
T131014.	●		●		●		●		●
T131038.	●		●		●				
T131214.	●		●		●		●		●
T131238.	●		●		●				
T131212.			●		●				

Push-in fittings - Series Tecnorap - art. T13B

T13B04M5						●		●	
T13B0618	●		●		●		●		●
T13B0814	●		●		●		●		●
T13B1038	●		●		●				
T13B1212			●		●				

Push-in fittings - Series Tecnorap - art. T14

T1404M5						●		●	
T140418	●		●		●		●		●
T140814	●		●		●		●		●
T140838	●		●		●				
T141038	●		●		●				
T141012					●				
T141238	●		●		●				
T141212					●				

Banjo code	Type of stem								
	407	407K	407V	408	408K	408V	15A	33A	34A

Brass compression fittings - Series 100 - art. 412

41218	●				●			●	●
41214	●				●			●	●
41238	●				●			●	
41212					●			●	

Brass compression fittings - Series 200 - art. 216

2160418			●			●			
2160618			●			●			
2160614		●			●				
2160818			●			●			
2160814		●			●				
2161014		●			●				

Brass push-on fittings - Series 300 - art. 405

40504M5	●		●						
4050418			●			●			
40506M5	●		●			●			
4050618			●			●			
4050614	●			●			●	●	●
4050818			●			●			
4050814	●			●			●	●	●
4051014	●			●			●	●	●

Brass push-on fittings - Series 300 - art. 406

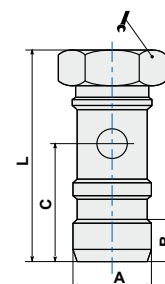
4060618			●			●			
4060614		●			●				
4060818			●			●			
4060814		●			●				
4061014		●			●				

ART. **407**

Banjo stem single with O-Ring



COD.	A	B	C	L			
40718	G1/8	4,5	13,75	25	14	100	11,78
40714	G1/4	9,9	16,7	30	17	50	22,89
40738	G3/8	6	18	34	22	25	38,58

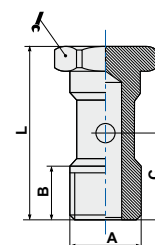


ART. **407K**

Banjo stem single



COD.	A	B	C	L			
407K14	G1/4	11	16,5	29,5	17	50	22,90

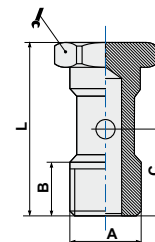


ART. **407V**

Banjo stem single



COD.	A	B	C	L			
407M5	M5	5,8	9,6	18	8	100	2,90
40718V	G1/8	9	15	28	14	100	13,27
40714V	G1/4	11	18	33	17	50	26,48
40738V	G3/8	12	21,5	37	22	50	45,68

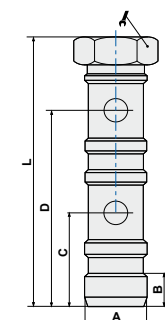


ART. **408**

Banjo stem double with O-Ring



COD.	A	B	C	D	L			
40818	G1/8	4,5	13	29	40	14	50	16,95
40814	G1/4	6	16,5	33,5	47	17	50	33,23
40838	G3/8	8,5	18	37,6	52,5	22	25	52,14
40812	G1/2	7,4	21,5	45	63	27	10	99,50

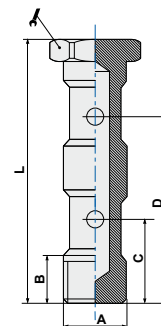


ART. **408K**

Banjo stem double



COD.	A	B	C	D	L			
408K14	G1/4	11	16,5	33	45,5	17	50	36,73

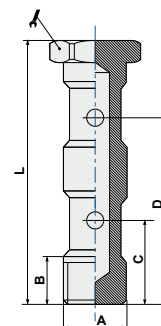


ART. **408V**

Banjo stem double



COD.	A	B	C	D	L			
40818V	G1/8	9	15	31	44,5	14	50	11,50
40814V	G1/4	11	17	36	51,5	17	50	36,73
40838V	G3/8	12	20,5	42	58,6	22	25	63,97
40812V	G1/2	14	24	50	68	24	10	78,14

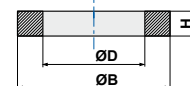


ART. **411**

Spacer washer



COD.	A	ØB	ØD	H		
411PM5	M5	9	5,1	1,5	100	0,10
411P18	G1/8	14	9,8	1,5	100	0,13
411P14	G1/4	18	13,5	1,5	100	0,21
411P38	G3/8	21	16,7	1,5	100	0,27
411P12	G1/2	26	21,1	2	100	0,32
411M5	M5	8,8	5,2	1	100	0,14
41118	G1/8	13,8	9,8	1,5	100	0,28
41114	G1/4	18	13,2	1,5	100	0,43
41138	G3/8	21	16,8	1,5	100	0,47
41112	G1/2	26	20,8	1,5	100	0,68
41134	G3/4	32,8	26,8	1,5	100	0,96



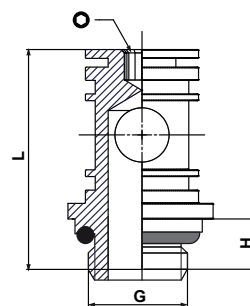
P = Nylon material
A = Size

ART. **15A**

Single stem for swivel banjo



COD.	G	L	Ø	H		
15AM5	M5	17	2,5	4,0	10	2,00
15AM5L	M5	18	2,5	4,0	10	2,13
15AM6L	M6	19	2,5	5,0	10	2,47
15A18	1/8	24,5	3	5,5	10	11,16
15A14	1/4	28	4	6,5	10	17,59
15A38	3/8	32,5	5	7,5	10	31,24
15A12	1/2	39	8	10,0	10	61,31

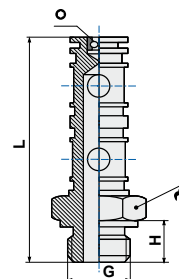


ART. **33A**

Double stem for swivel banjo



COD.	G	H	L		Ø		
33AM5L	M5	4,0	28,0	N.C.	2,5	50	3,00
33A18	1/8	5,5	43,3	14	3	50	16,92
33A14	1/4	6,5	50,0	18	4	50	20,62



ART. **34A**

Triple stem for swivel banjo



COD.	G	H	L		Ø		
34A18	1/8	5,5	58,4	14	3	50	21,50
34A14	1/4	6,5	67,1	18	4	25	20,62

