

Ball taps - MINI

Series 4000



The mini ball valves with handle are produced in Italy according to the reference ISO norms as warranty of high quality level.

Technical sheet

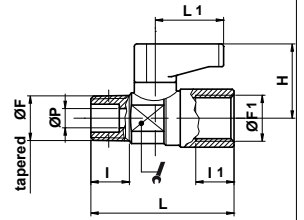
FLUIDS		Compressed air (for different fluid please contact our Technical Dept.)
APPLICATIONS		Pneumatic, oleodynamic and hydraulic circuits
SUGGESTED TUBES		Plastic: TPU, PA, PE, ecc. Metal: copper, aluminium, steel
TEMPERATURE AND PRESSURE	Working temperature	from -20°C to +80°C
	Max working pressure	20 bar
THREAD TYPE		BSPP pipe thread ISO 228 - BSPT tapered ISO 7 - DIN 2999
MATERIALS	Ball, ogive, nut, ring nut and shaft	Brass UNI EN 12164 CW614N (nickel plated)
	Body	Brass UNI EN 12165 CW617N (nickel plated)
	Handle	PA66 plastic material. Lever colours: Standard black. It is available in the following colours by adding the following letters at the end of the code: B=Blue, R=Red, G=Yellow, W=White, VE=Green
	Washer ball seat	PTFE
	O-Ring	NBR 70

ART. **4010**

Tapered male/female ball valve



COD.	ØF	ØF1	ØP	I	I1	L	L1	H			
40100900	1/8	1/8	5,5	8	8	35,5	19	21,5	14	1	34,00
40101800	1/4	1/8	5,5	11	8	38	19	21,5	14	1	38,00
40101900	1/4	1/4	5,5	11	11	40,5	19	21,5	14	1	44,50
40102800	3/8	1/4	5,5	11,5	11	41,5	19	21,5	14	1	48,00
40102900	3/8	3/8	7	13	16	48	19	22,5	18	1	66,00
40103900	3/8	1/2	10	17	23	58	25	25	22	1	128,00

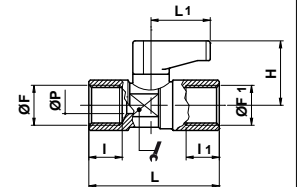


ART. **4000**

Female/female ball valve



COD.	ØF	ØF1	ØP	I	I1	L	L1	H			
40000900	1/8	1/8	5,5	8	8	36,5	19	21,5	14	1	36,00
40001900	1/4	1/4	5,5	11	11	43	19	21,5	14	1	48,00
40002900	3/8	3/8	7	11,5	16	48	19	22,5	18	1	74,00
40003900	1/2	1/2	10	16	23	59	25	32	32	1	138,00

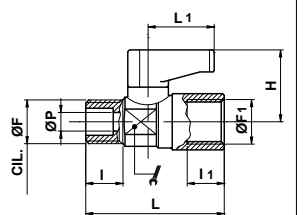


ART. **4020**

Parallel male/female ball valve

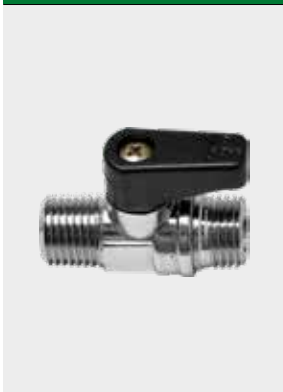


COD.	ØF	ØF1	ØP	I	I1	L	L1	H			
40200900	1/8	1/8	5,5	7	8	34,5	19	21,5	14	1	32,00
40201800	1/4	1/8	5,5	8	8	35,5	19	21,5	14	1	36,00
40201900	1/4	1/4	5,5	8	11	37,5	19	21,5	14	1	40,00
40202800	3/8	1/4	5,5	5,5	9	11	19	21,5	14	1	46,00
40202900	3/8	3/8	7	10	16	43	19	22,5	18	1	86,00
40203900	1/2	1/2	10	15	23	58	25	32	22	1	128,00

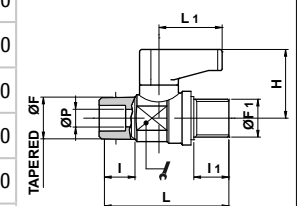


ART. **4030**

Tapered/parallel male ball valve



COD.	ØF	ØF1	ØP	I	I1	L	L1	H			
40300900	1/8	1/8	5,5	8	7	33	19	21,5	14	1	30,00
40301000	1/8	1/4	5,5	8	7,5	33,5	19	21,5	14	1	32,00
40301800	1/4	1/8	5,5	11	7	35,5	19	21,5	14	1	34,00
40301900	1/4	1/4	5,5	11	7,5	37,5	19	21,5	14	1	36,00
40302800	3/8	1/4	5,5	11,5	7,5	37	19	21,5	14	1	40,00
40302900	3/8	3/8	7	13	10	48	19	22,5	18	1	44,00
40303900	1/2	1/2	10	17	10	58	25	32	22	1	49,00

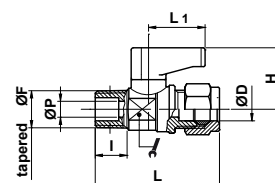


ART. **4050**

Tapered male ball valve bicone connection



COD.	ØF	ØD	ØP	I	L	L1	H			
40501570	1/8	6	5,5	8	39	19,5	21,5	14	1	38,00
40501580	1/4	6	5,5	11	42	19,5	21,5	14	1	42,00
40501660	1/8	8	5,5	8	39	19,5	21,5	14	1	42,00
40501660	1/4	8	5,5	11	42	19,5	21,5	14	1	46,00
40501680	3/8	8	5,5	11,5	43	19,5	21,5	14	1	50,00

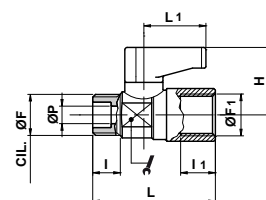


ART. **4070**

Parallel male/female ball valve (short series)

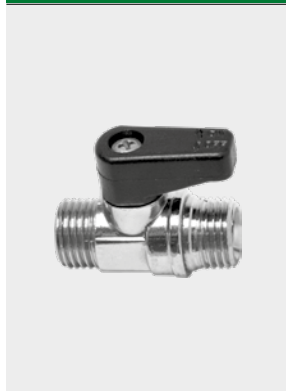


COD.	ØF	ØF1	ØP	I	I1	L	L1	H			
40700900	1/8	1/8	5,5	7	7	33,5	19,5	21,5	14	1	30,00
40701800	1/4	1/8	5,5	8	7	34	19,5	21,5	14	1	32,00
40701900	1/4	1/4	5,5	8	8	35	19,5	21,5	14	1	38,00
40702900	3/8	3/8	7	8	16	41	19,5	23	18	1	64,00
40703900	1/2	1/2	10	10	23	50	26,5	33	22	1	72,00

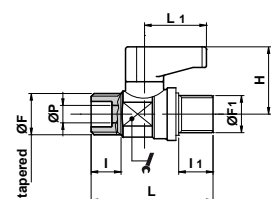


ART. **4080**

Parallel/parallel male ball valve



COD.	ØF	ØF1	ØP	I	I1	L	L1	H			
40800900	1/8	1/8	5,5	7	7	32	19,5	21,5	14	1	30,00
40801600	1/8	1/4	5,5	7	8	32,5	19,5	21,5	14	1	32,00
40801900	1/4	1/4	5,5	8	8	33	19,5	21,5	14	1	34,00
40802800	3/8	1/4	5,5	9	8	34	19,5	21,5	14	1	40,00
40802900	3/8	3/8	8	13,5	9	45,5	19,5	23	18	1	43,00
40803900	1/2	1/2	10	15	8,5	51	26,5	33	22	1	47,00

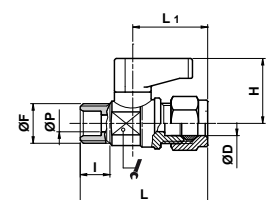


ART. **4100**

Parallel male ball valve bicone connection



COD.	ØF	ØD	ØP	I	L	L1	H			
41001570	1/8	6	5,5	7	39,5	19,5	21,5	14	1	36,00
41001580	1/4	6	5,5	8	40,5	19,5	21,5	14	1	40,00
41001660	1/8	8	5,5	7	40,5	19,5	21,5	14	1	40,00
41001670	1/4	8	5,5	8	41,5	19,5	21,5	14	1	44,00
41001680	3/8	8	5,5	9	42,5	19,5	21,5	14	1	48,00

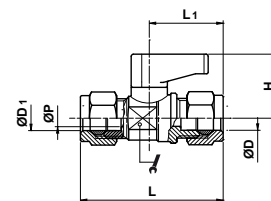


ART. **4110**

Bicone - bicone ball valve



COD.	D1	ØD	ØP	L	L1	H			
41105900	6	6	5,5	47,0	19,0	21,5	14	1	42,00
41106000	6	8	5,5	48,0	19,0	21,5	14	1	48,00
41106100	8	8	5,5	49,0	19,0	21,5	14	1	54,00

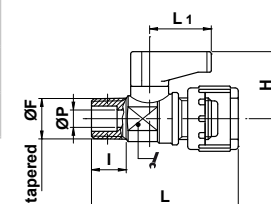


ART. **4120**

Tapered male ball valve bayonet connection with nut



COD.	ØF	ØP	I	L	L1	H			
41201000	1/8	5,5	8,0	38,5	19,0	21,5	14	1	44,00
41201900	1/4	5,5	11,0	41,0	19,0	21,5	14	1	54,00

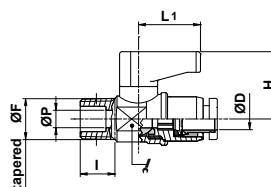


ART. **4160**

Tapered male ball valve with automatic tube connection



COD.	ØD	ØF	ØP	I	L	L1	H			
41601490	4	1/8	5,5	8,5	41,0	19	21,5	14	1	36,00
41601500	4	1/4	5,5	11,5	44,0	19	21,5	14	1	40,00
41601570	6	1/8	5,5	8,5	41,0	19	21,5	14	1	38,00
41601580	6	1/4	5,5	11,5	44,0	19	21,5	14	1	42,00
41601590	6	3/8	5,5	12,0	45,0	19	21,5	14	1	46,00
41601670	8	1/4	5,5	11,5	48,0	19	21,5	14	1	48,00
41601680	8	3/8	5,5	12,0	48,5	19	21,5	14	1	52,00

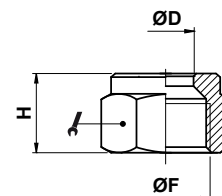


ART. **4190**

Ball valve nut with bicone

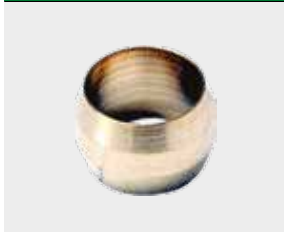


COD.	ØF	ØD	H			
41901570	1/8	6	11,5	12	10	6,00
41901670	1/4	8	12,0	15	10	8,00



ART. **4200**

Brass bicone for ball valve



COD.	ØD	H		
42007500	6	6,6	10	0,80
42008300	8	6,6	10	1,60

