



Brass standard fittings

Series 100



The standard 100 series fittings are produced in Italy according to the reference ISO norms as warranty of high quality level and reliability.

Technical sheet

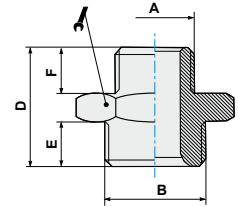
FLUIDS		Compressed air, water up to 100 °C (for different fluid please contact our Technical Dept.)
APPLICATIONS		Pneumatic, oleodynamic and hydraulic circuits.
TEMPERATURE AND PRESSURE		Temperatures and pressures usually depend by the technical features of the employed tubes. Max pressure suggested 60 bar.
THREAD TYPE		BSP parallell UNI-ISO 228; BSP tapered UNI-ISO 7; Metric ISO/R 262
MATERIALS	Body	Brass UNI EN 12164 CW614N (bar); UNI EN 12165 CW617N (molded)
	Seals	NBR 70 DWGV-EN549 UL157
	Washers	Aluminium/Nylon

ART. **101**

Parallel nipple



COD.	A	B	D	E	F			
101M5M5	M5	M5	11,5	4	4	8	100	2,35
101M518	M5	G1/8	14,5	6	4	14	100	8,58
1011818	G1/8	G1/8	16,5	6	6	14	100	8,83
1011814	G1/8	G1/4	19,0	8	6	17	100	14,62
1011838	G1/8	G3/8	20,0	9	6	19	100	19,94
1011414	G1/4	G1/4	21,0	8	8	17	100	18,96
1011438	G1/4	G3/8	22,0	9	8	19	100	23,72
1011412	G1/4	G1/2	23,5	10	8	24	100	32,44
1013838	G3/8	G3/8	23,0	9	9	19	50	23,46
1013812	G3/8	G1/2	24,5	10	9	24	50	37,61
1011212	G1/2	G1/2	25,5	10	10	24	50	41,00
1011234	G1/2	G3/4	27,5	11	10	30	25	74,00
1013434	G3/4	G3/4	28,5	11	11	30	25	72,00

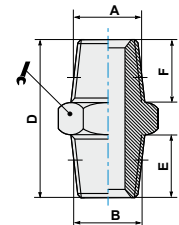


ART. **102**

Taper nipple



COD.	A	B	D	E	F			
1021818	G1/8	G1/8	20,0	8,0	8,0	12	100	8,85
1021814	G1/8	G1/4	24,0	11,0	8,0	14	100	14,89
1021838	G1/8	G3/8	24,5	11,5	8,0	17	100	20,73
1021812	G1/8	G1/2	27,5	14,0	8,0	22	50	37,08
1021414	G1/4	G1/4	27,0	11,0	11,0	14	100	17,90
1021438	G1/4	G3/8	27,5	11,5	11,0	17	100	23,83
1021412	G1/4	G1/2	30,5	14,0	11,0	22	50	36,50
1023838	G3/8	G3/8	28,0	11,5	11,5	17	100	25,51
1023812	G3/8	G1/2	31,0	14,0	11,5	22	50	37,42
1021212	G1/2	G1/2	33,5	14,0	14,0	22	50	41,91
1021234	G1/2	G3/4	37,5	16,5	14,0	27	25	69,40
1023434	G3/4	G3/4	40,0	16,5	16,5	27	25	79,08
1023401	G3/4	G1'	42,5	19,0	16,5	34	10	122,00
1020101	G1'	G1'	45,0	19,0	19,0	34	10	113,54

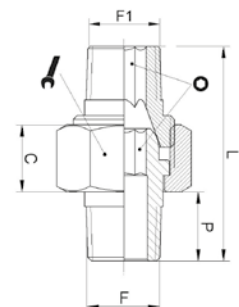


ART. **102P3**

Taper nipple - 3 pieces

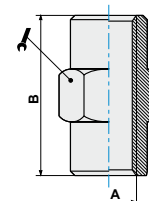


COD.	F	F1	P	L	C				
10218P3	1/8	1/8	9,0	27,0	8,6	15	5	50	47,14
10214P3	1/4	1/4	11,5	33,5	9,6	19	6	50	49,00
10238P3	3/8	3/8	13,0	36,0	10,0	22	8	50	55,26
10212P3	1/2	1/2	15,5	45,0	12,0	27	12	25	55,00
10234P3	3/4	3/4	18,0	53,0	17,0	36	14	25	84,62
10201P3	1"	1"	22,0	64,0	20,0	46	19	5	37,60
1021814P3	1/8	1/4	9,0	30,0	8,5	15	5	50	23,49
1021438P3	1/4	3/8	11,5	36,0	9,5	19	6	50	22,84
1023812P3	3/8	1/2	13,0	39,0	10,0	22	8	25	39,32

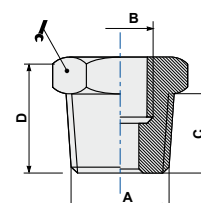


ART. 103
Sleeve

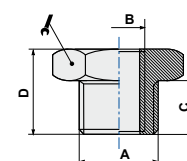

COD.	A	B			
103M5	M5	11	8	100	2,00
10318	G1/8	15	14	100	10,95
10314	G1/4	22	17	100	18,97
10338	G3/8	23	22	50	33,96
10312	G1/2	30	26	25	49,35
10334	G3/4	32	32	10	76,00


ART. 104
Taper M/F reducer

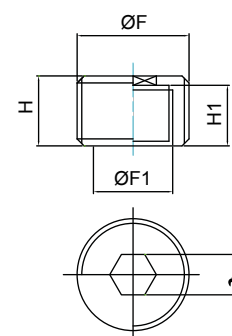

COD.	A	B	C	D			
1041418	G1/4	G1/8	11,0	16,0	14	100	9,99
1043818	G3/8	G1/8	11,5	16,5	17	100	20,90
1041218	G1/2	G1/8	14,0	19,5	22	50	44,22
1043814	G3/8	G1/4	11,5	16,5	17	100	13,06
1041214	G1/2	G1/4	14,0	19,5	22	50	30,54
1041238	G1/2	G3/8	14,0	19,5	22	50	28,43
1043412	G3/4	G1/2	16,5	23,0	27	25	42,38
1043438	G3/4	G3/8	16,5	23,0	27	10	55,86
1040112	G1'	G1/2	17,0	25,0	34	10	126,52
1040134	G1'	G3/4	17,0	25,0	34	10	73,07


ART. 104Z
Parallel M/F reducer


COD.	A	B	C	D			
104Z18M5	G1/8	M5	6,0	10,5	14	100	8,00
104Z1418	G1/4	G1/8	8,0	13,0	17	100	10,74
104Z3818	G3/8	G1/8	9,0	14,0	19	100	19,13
104Z3814	G3/8	G1/4	9,0	14,0	19	100	13,00
104Z1218	G1/2	G1/8	10,0	15,5	24	50	39,06
104Z1214	G1/2	G1/4	10,0	15,5	24	50	32,42
104Z1238	G1/2	G3/8	10,0	15,5	24	50	21,48
104Z3412	G3/4	G1/2	12,5	18,0	30	25	41,24
104Z3438	G3/4	G3/8	12,5	18,0	30	10	53,72


ART. 104S
Disapparence parallel reducer


COD.	ØF	ØF1	H	H1			
104S1418	1/4	1/8	8	7	6	50	4,16
104S3814	3/8	1/4	9	7	8	50	13,06
104S1238	1/2	3/8	10	9	10	25	65,00
104S3412	3/4	1/2	14	11	12	10	41,38
104S0134	1"	3/4	20	12,5	17	10	73,07

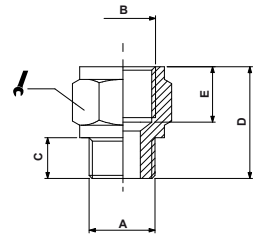


ART. **105**

Taper M/F extension



COD.	A	B	C	D	E			
1051818	G1/8	G1/8	8,0	18,0	8,0	14	100	10,85
1051814	G1/8	G1/4	8,0	21,5	11,0	17	100	17,75
1051838	G1/8	G3/8	8,0	22,5	11,5	22	50	30,26
1051414	G1/4	G1/4	11,0	24,5	11,0	17	100	21,07
1051438	G1/4	G3/8	11,0	24,5	11,5	22	50	31,86
1051412	G1/4	G1/2	11,0	29,0	14,0	24	50	50,38
1053838	G3/8	G3/8	11,5	26,0	11,5	22	50	38,16
1053812	G3/8	G1/2	11,5	29,5	14,0	24	25	40,04
1051212	G1/2	G1/2	14,0	32,0	14,0	26	25	53,33
1051234	G1/2	G3/4	14,0	35,0	16,5	32	10	77,70
1051201	G1/2	G1	14,0	37,0	18,0	38	10	104

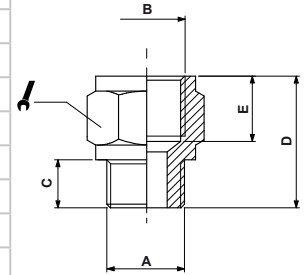


ART. **105Z**

Parallel M/F extension



COD.	A	B	C	D	E			
105ZM5M5	M5	M5	5	14,0	7,0	9	100	4,39
105ZM518	M5	G1/8	4	14,5	8,0	14	100	9,54
105ZM618	M6	G1/8	6	16,0	8,0	14	100	9,67
105Z1818	G1/8	G1/8	6	16,0	8,0	14	100	10,06
105Z1814	G1/8	G1/4	6	19,5	11,0	17	100	17,58
105Z1838	G1/8	G3/8	6	20,5	11,5	22	50	30,98
105Z1414	G1/4	G1/4	8	21,5	11,0	17	100	19,07
105Z1438	G1/4	G3/8	8	22,5	11,5	22	50	32,12
105Z1412	G1/4	G1/2	8	26,0	14,0	24	50	36,08
105Z3838	G3/8	G3/8	9	23,5	11,5	22	50	34,23
105Z3812	G3/8	G1/2	9	27,0	14,0	24	25	52,04
105Z1212	G1/2	G1/2	10	28,0	14,0	26	25	53,54
105Z1234	G1/2	G3/4	10	30,0	16,5	32	10	2,00

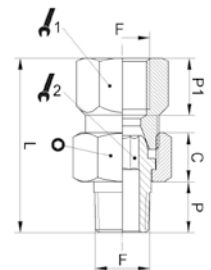


ART. **105P3**

Extension M/F - 3 pieces



COD.	F	P	P1	L	C					
10518P3	1/8	9,0	10,0	30,5	8,5	14	15	5	50	12,41
10514P3	1/4	12,0	12,0	37,0	9,5	17	19	6	50	21,07
10538P3	3/8	12,0	12,0	40,0	10,0	21	22	8	25	38,16
10512P3	1/2	15,0	15,0	48,0	12,0	25	27	12	10	53,33

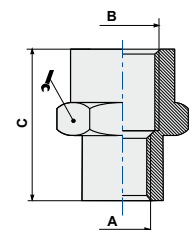


ART. **106**

Reducing sleeve

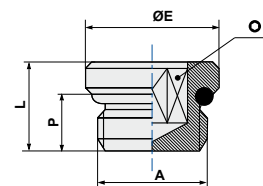


COD.	A	B	C			
106M518	M5	G1/8	13,5	14	100	9,58
1061814	G1/8	G1/4	19,0	17	100	16,39
1061838	G1/8	G3/8	20,0	22	25	27,57
1061812	G1/8	G1/2	24,0	26	50	57,96
1061438	G1/4	G3/8	23,0	22	50	30,55
1061412	G1/4	G1/2	25,0	26	50	32,94
1063812	G3/8	G1/2	27,5	26	25	38,93
1061234	G1/2	G3/4	30,0	32	10	36,00



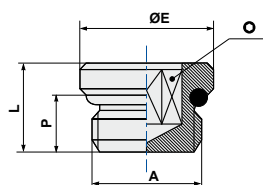
ART. 107
Parallel male plug + O-Ring


COD.	A	P	L	ØE	⊙		
107M5	M5	4,0	5,5	8	2,5	100	0,81
10718	G1/8	5,5	7,5	14	4,0	100	4,39
10714	G1/4	6,5	8,5	17	6,0	100	7,68
10738	G3/8	7,5	10,5	20	8,0	100	15,21
10712	G1/2	9,0	12,0	24	10,0	50	25,00
10734	G3/4	15,0	20,0	32	12,0	10	27,00

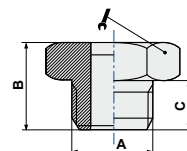

ART. 107P
Parallel male plug + OR (Technopolymer)


COD.	A	P	L	ØE	Nm*	⊙		
107P18	G1/8	5,3	8,2	14	1,2	4	100	1,13
107P14	G1/4	6,5	9,2	18	1,5	6	100	2,11

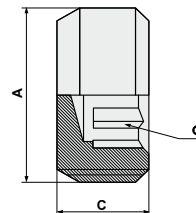
Nm* = Tightening torque
 Note: Product made of Technopolymer IXEF 1022


ART. 107Z
Parallel male plug

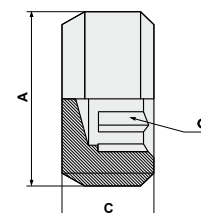

COD.	A	B	C			
107Z18	G1/8	10,5	6	14	100	7,07
107Z14	G1/4	13,0	8	17	100	13,99
107Z38	G3/8	14,0	9	19	50	17,82
107Z12	G1/2	15,5	10	24	50	31,44
107Z34	G3/4	16,5	11	30	25	48,70
107Z01	G1"	19,0	13	38	10	152,71


ART. E100
Disappearance tapered plug


COD.	A	C	⊙		
E10018	G1/8	8	5	100	3,04
E10018L5	G1/8	5	5	100	2,88
E10014	G1/4	10	6	100	6,83
E10038	G3/8	11	8	50	9,00
E10012	G1/2	13	10	50	14,00


ART. E200
Disappearance parallel plug


COD.	A	C	⊙		
E20018	G1/8	8	5	100	2,80
E20014	G1/4	10	6	100	6,86
E20038	G3/8	11	8	50	13,58
E20012	G1/2	13	10	50	23,11

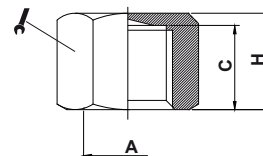


ART. **108**

Female plug



COD.	A	C	H			
10818	G1/8	8,0	10,0	14	100	9,52
10814	G1/4	11,0	13,5	17	100	16,28
10838	G3/8	11,5	14,0	20	50	30,18
10812	G1/2	14,0	16,5	24	50	31,50

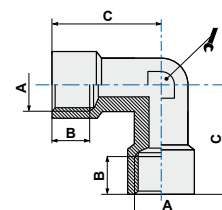


ART. **109**

F/F elbow



COD.	A	B	C			
10918	G1/8	7	20,0	10	100	20,25
10914	G1/4	8	25,5	13	50	39,05
10938	G3/8	10	29,0	17	25	62,56
10912	G1/2	11	35,0	20	10	105,15
10934	G3/4	16	36,0	25	5	143,00
10901	G1'	19	44,0	30	5	236,97

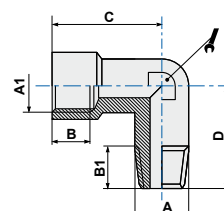


ART. **110**

M/F elbow



COD.	A	A1	B	B1	C	D			
110M5	M5	M5	4	*	11,0	11,5	9	100	7,01
11018	G1/8	G1/8	7	8	20,0	19,0	10	50	16,30
11014	G1/4	G1/4	8	11	25,5	24,0	13	50	33,90
11038	G3/8	G3/8	10	11,5	29,0	26,5	17	25	53,01
11012	G1/2	G1/2	11	14	35,0	31,5	20	20	88,06
11034	G3/4	G3/4	16	16	35,0	34,5	25	10	121,63
11001	G1'	G1'	19	16	44,0	51,0	30	5	119,02
11014F18M	G1/8	G1/4	8	8	25,5	23,0	13	50	32,28

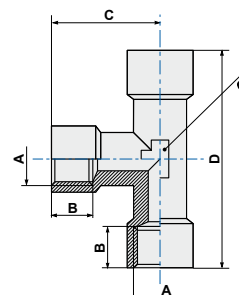


ART. **111**

F/F T



COD.	A	B	C	D			
11118	G1/8	7	20,0	40	10	50	28,79
11114	G1/4	8	25,5	51	13	25	57,04
11138	G3/8	10	29,0	58	17	10	83,55
11112	G1/2	11	35,0	70	20	10	145,94
11134	G3/4	16	31,0	73	25	5	196,05
11101	G1'	19	49,5	90	30	5	346,23

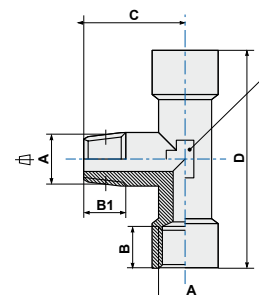


ART. **112**

F/M/F T



COD.	A	B	B1	C	D			
11218	G1/8	7	8,0	19,0	40	10	50	22,42
11214	G1/4	8	11,0	24,0	51	13	25	50,84
11238	G3/8	10	13,6	26,5	58	17	25	74,67
11212	G1/2	11	15,5	31,5	72	20	10	127,43
11234	G3/4	16	15,0	31,0	73	25	5	290,76
11201	G1'	19	16,0	38,0	90	30	5	340,00

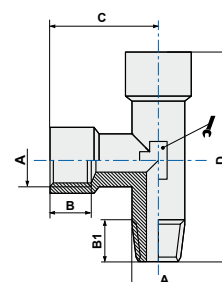


ART. **113**

M/F/F T



COD.	A	B	B1	C	D			
11318	G1/8	7	8,0	20,0	39,0	10	50	24,94
11314	G1/4	8	11,0	25,5	49,5	13	25	50,68
11338	G3/8	10	13,6	29,0	55,5	17	25	74,46
11312	G1/2	11	15,5	35,0	65,0	20	10	127,29
11334	G3/4	16	15,0	31,0	67,0	25	5	290,76
11301	G1"	19	16,0	44,0	84,0	30	5	340

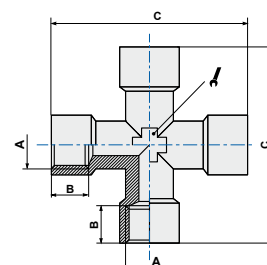


ART. **114**

F.F.F.F. cross



COD.	A	B	C			
11418	G1/8	7	40	10	25	37,69
11414	G1/4	8	51	13	25	73,04
11438	G3/8	10	58	17	10	108,34
11412	G1/2	11	72	20	5	185,92

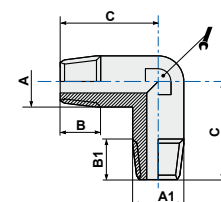


ART. **115**

M/M elbow



COD.	A	B	C	A1	B1			
11518	G1/8	8,0	19,0	G1/8	8,0	10	100	12,44
11514	G1/4	12,5	24,0	G1/4	12,5	13	50	27,87
11538	G3/8	13,6	26,5	G3/8	26,5	17	25	41,66
11512	G1/2	15,5	31,5	G1/2	15,5	20	25	70,62
11534	G3/4	15,0	35,5	G3/4	15,0	25	5	98,63
11501	G1"	16,0	51,0	G1"	51,0	30	5	151,16
1151814	G1/8	8,0	22,0	G1/4	12,5	13	100	16,10

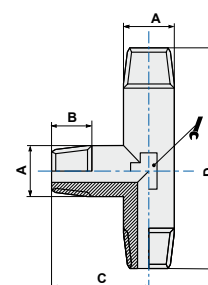


ART. **116**

M/M/M T



COD.	A	B	C	D			
11618	G1/8	8,0	19,0	38	10	100	19,07
11614	G1/4	12,5	24,0	48	13	50	32,72
11638	G3/8	13,6	26,5	53	17	25	54,98
11612	G1/2	15,5	31,5	63	20	10	91,05
11634	G3/4	15,0	35,5	66	25	5	127,06
11601	G1"	16,0	40,5	78	30	5	209,77

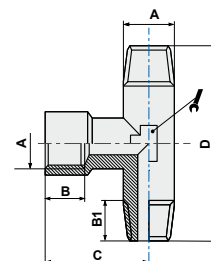


ART. **117**

M/F/M T



COD.	A	B	B1	C	D			
11718	G1/8	7	8,0	20,0	38	10	100	19,90
11714	G1/4	8	12,5	25,5	48	13	50	43,69
11738	G3/8	10	13,6	29,0	53	17	25	68,01
11712	G1/2	11	15,5	36,0	63	17	10	111,33
11734	G3/4	16	15,0	34,5	66	25	5	205,44
11701	G1"	19	16,0	46,5	78	30	5	205,12

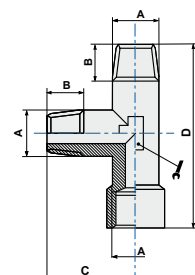


ART. **118**

M/M/F T



COD.	A	B	C	D			
11818	G1/8	8,0	19,0	39,0	10	100	20,84
11814	G1/4	12,5	24,0	49,5	13	50	44,09
11838	G3/8	13,6	26,5	55,5	17	25	64,58
11812	G1/2	15,5	31,5	67,5	20	10	109,27
11834	G3/4	15,0	34,5	69,0	25	5	157,53
11801	G1"	16,0	38,0	84,0	30	5	245,53

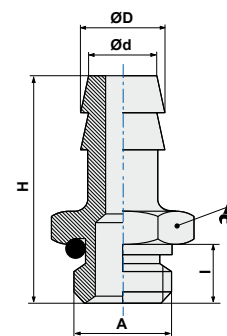


ART. **119**

Male hose adapter + O-Ring



COD.	ØD	A	I	H	Ød			
11945M5	4,5	M5	4	31,5	2,2	11	100	2,00
1190718	7	G1/8	6	31,5	4	13	100	9,00
1190714	7	G1/4	8	34,0	4	16	100	15,06
1190818	8	G1/8	6	31,5	5,30	13	100	16,21
1190918	9	G1/8	6	31,5	5,5	13	100	11,77
1190914	9	G1/4	8	34,0	5,5	16	100	19,34
1190938	9	G3/8	9	35,0	5,5	17	50	22,18
1191014	10	G1/4	8	34,0	6	16	50	21,82
1191038	10	G3/8	9	35,0	6	17	50	23,12
1191214	12	G1/4	8	34,0	8	16	50	21,27
1191238	12	G3/8	9	36,0	8	17	50	25,12
1191212	12	G1/2	11	37,0	8	22	50	35,50
1191738	17	G3/8	9	36,0	11	17	50	28,53
1191712	17	G1/2	11	37,0	12	22	50	42,18

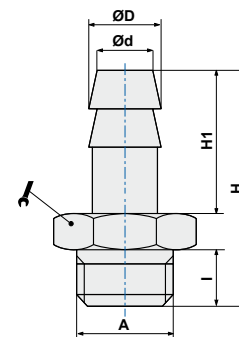


ART. **119Z**

Male hose adapter



COD.	ØD	A	I	H	H1	Ød			
119Z04M5	4,5	M5	4	22,5	15,0	2	8	100	3,00
119Z0618	6	G1/8	6	29,5	19,0	3	12	100	8,23
119Z0614	6	G1/4	8	32,0	19,0	3	14	100	14,66
119Z0718	7	G1/8	6	29,5	19,0	4	12	100	10,02
119Z0714	7	G1/4	8	32,0	19,0	4	14	100	16,06
119Z0818	8	G1/8	6	29,5	19,0	5	12	100	9,02
119Z0814	8	G1/4	8	32,0	19,0	5	14	100	13,55
119Z0838	8	G3/8	9	33,0	19,0	5	19	100	21,64
119Z0918	9	G1/8	6	29,5	19,0	6	12	100	11,24
119Z0914	9	G1/4	8	32,0	19,0	6	14	100	17,66
119Z0938	9	G3/8	9	33,0	19,0	6	19	100	21,78
119Z0912	9	G1/2	10	35,5	19,0	6	24	25	32,76
119Z1018	10	G1/8	6	30,5	20,0	7	12	100	10,26
119Z1014	10	G1/4	8	33,0	20,0	7	14	50	19,74
119Z1038	10	G3/8	9	34,0	20,0	7	19	100	23,98
119Z1012	10	G1/2	10	36,0	20,0	7	24	50	32,46
119Z1214	12	G1/4	8	33,0	20,0	9	14	50	16,19
119Z1238	12	G3/8	9	34,0	20,0	9	19	50	23,22
119Z1212	12	G1/2	10	35,5	20,0	9	22	50	31,72
119Z1414	14	G1/4	8	33,0	20,0	10	14	25	33,61
119Z1438	14	G3/8	9	36,0	22,0	10,5	19	50	26,34
119Z1412	14	G1/2	10	37,5	22,0	10,5	22	50	33,73
119Z1638	16	G3/8	9	38,0	24,0	12	19	50	29,76
119Z1612	16	G1/2	10	38,0	22,0	12,5	24	25	34,18
119Z1738	17	G3/8	9	38,0	24,0	13	19	50	31,05
119Z1712	17	G1/2	10	39,5	24,0	13	22	50	44,64
119Z2012	20	G1/2	10	39,5	24,0	14	24	25	40,26
119Z2034	20	G3/4	10	39,5	24,0	16	24	25	60,00

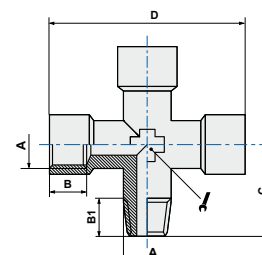


ART. **120**

M.F.F.cross



COD.	A	B	B1	C	D			
12018	G1/8	7	8,0	19,0	40	10	25	30,06
12014	G1/4	8	12,5	24,0	51	13	25	68,02
12038	G3/8	10	13,6	26,5	58	17	10	98,03
12012	G1/2	11	15,5	31,5	72	20	5	166,23

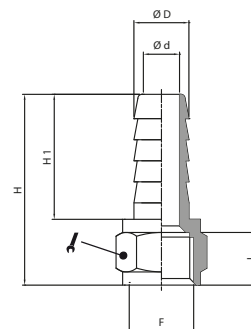


ART. **122**

Female hose adapter



COD.	ØD	F	Ød	I	H	H1			
1220618	6	G1/8	3,5	8	28,5	19	12	100	12,01
1220718	7	G1/8	4,5	8	28,5	19	12	100	27,00
1220714	7	G1/4	4,5	11	31,5	19	15	100	23,98
1220818	8	G1/8	5,5	8	28,5	19	12	100	10,00
1220814	8	G1/4	5,5	11	31,5	19	15	100	20,74
1220914	9	G1/4	6,5	11	31,5	19	15	100	25,01
1221014	10	G1/4	7,5	11	32,5	20	15	100	14,00
1221038	10	G3/8	7,5	11,5	33	20	19	100	28,09
1221238	12	G3/8	9,5	11,5	33	20	19	100	30,26
1221212	12	G1/2	9,5	14	36	20	24	100	45,02
1221438	14	G3/8	11	11,5	35	22	19	100	22,00
1221412	14	G1/2	11	14	38	22	24	25	40,00

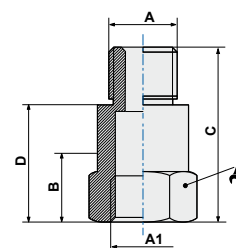


ART. **123**

Extension



COD.	A	A1	B	C	D			
12318L22	G1/8	G1/8	6	22	16	14	100	14,71
12318L32	G1/8	G1/8	6	32	26	14	100	21,57
12318L42	G1/8	G1/8	6	42	36	14	100	20,44
12318L51	G1/8	G1/8	6	51	45	14	50	36,30
12314L28	G1/4	G1/4	8	28	20	17	50	25,20
12314L35	G1/4	G1/4	8	35	27	17	50	31,32
12314L51	G1/4	G1/4	8	51	43	17	25	44,72

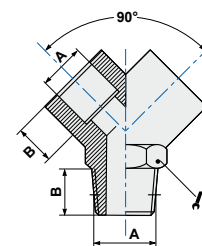


ART. **125**

Male Y



COD.	A	B			
12518	G1/8	8,0	13	50	21,52
12514	G1/4	11,0	17	25	38,07
12538	G3/8	11,5	20	25	52,03
12512	G1/2	14,0	25	10	100,72

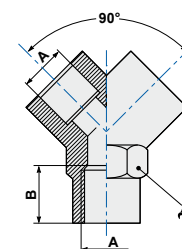


ART. **126**

Female Y

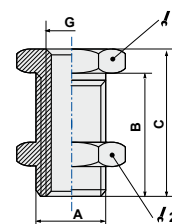


COD.	A	B			
12618	G1/8	8	13	50	19,34
12614	G1/4	11	17	25	33,84
12638	G3/8	11	20	25	45,38
12612	G1/2	14	25	10	84,53

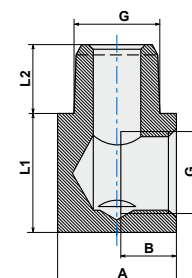


ART. 127
Female bulkhead (nickel plated)


COD.	G	A	B	C				
127M5	M5	M10x1,0	10,5	14	14	14	100	11,86
12718	G1/8	M16x1,5	14,0	18	22	19	50	29,97
12714	G1/4	M20x1,5	21,0	24	27	24	25	53,78
12738	G3/8	M26x1,5	21,0	26	32	30	25	95,70
12712	G1/2	M28x1,5	27,0	33	36	32	10	11,01


ART. RLB100
M/F elbow tapered


COD.	G	A	B	L1	L2		
RLB100M5	M5	9	4,5	9	4,5	100	5,03
RLB10018	1/8	14	6,5	14	8	100	17,21
RLB10014	1/4	18	9	18	10	100	37,13
RLB10038	3/8	19	11	19	11,5	50	50,00


ART. 412
Female single banjo body


COD.	A	ØB	ØC	D	H		
41218	G1/8	9,9	14	20	15	50	17,40
41214	G1/4	13,3	18	24	17	50	29,14
41238	G3/8	16,8	21	28,5	20	25	41,00
41212	G1/2	21	26	34,524	24	25	60,15

