

Brass push-in fittings

Series RAP - RAP BLACK - OT



The RAP series push-in fittings are produced in Italy according to the reference ISO norms as warranty of high quality level. They are available with different thrust sleeve colours and in numerous variants to meet all application requirements.

Ordering code

A 10 C 08 M5

THRUST SLEEVE COLOUR

blank = Green
A = Blue
B = Black
S = Grey

MODEL TYPE

01 ... 90

FUNCTIONAL DENOMINATIONS

OT = Nickel-plated Brass Sleeve
OTV = Nickel-plated Brass Sleeve - O-Ring Viton
OV = All Metal - O-Ring FKM
C = Conical thread
F = Threaded body
L = Extended elbow
E = Increaser
V = Thrust sleeve in POM - O-Ring FKM

TUBE CONNECTION

04 ... 14 = Tube diameter (mm)

THREADED CONNECTION

M5; M6; M12; 18; 14; 38; 12 = Thread size (M5; M6; M12x1,5; 1/8; 1/4; 3/8; 1/2)

04 ... 16 = Tube diameter

L0 = Version with lateral plug

See assembly instructions in the appendix on page 211

Series

• **B**



• **OT**



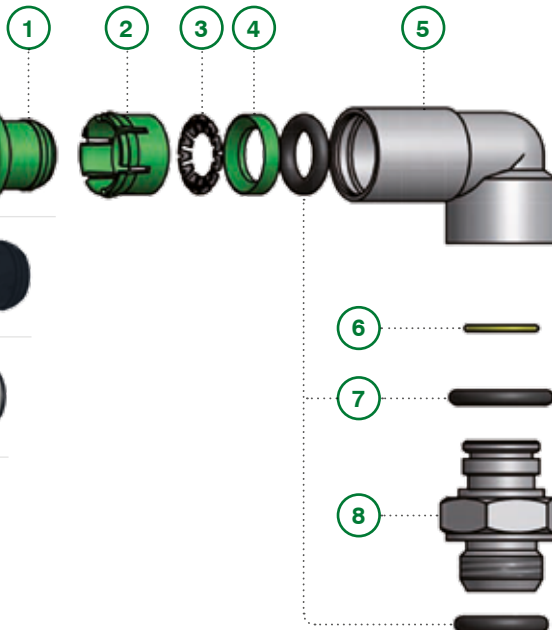
• **S**

on request



• **A**

on request



Components

- 1 Thrust sleeve
- 2 Lock ring
- 3 Crimping gripper
- 4 Supporting ring
- 5 Fitting body
- 6 Elastic ring
- 7 O-Ring seal
- 8 Swivel base



Technical sheet

| | | |
|---------------------------------|---|--|
| FLUIDS | | Compressed air (for different fluid please contact our Technical Dept.) |
| APPLICATIONS | | Pneumatic circuits, low pressure hydraulic applications, according to DIN 3861-3870 norms. Suitable for vacuum applications. |
| SUGGESTED TUBES | | TPU (Polyurethane), PA11/PA12 (Polyamide), TPE (Polyethylene), TPA (Polyurethane/Copolyester) |
| TUBES TOLERANCES | | Diam. between 4 and 10 mm +/- 0,05 Diam. from 12 mm +/- 0,1 |
| PROTECTION RATING | | IP 68 |
| TEMPERATURE AND PRESSURE | Recommended limit values | Temperatures and pressures usually depend by the technical features of the employed tubes, anyway it is suggested a limit working pressure of 15 bar and a temperature range between -20°C and +70°C |
| | Technical testing data | In the table below there are indicated the load traction resistance values and the main working and breaking limit (Pressure and Temperature) of the main commercial tubing. |
| | Note | For more complete informations please read the technical catalogue of your tube supplier. |
| THREAD TYPE | | BSP paralell UNI-ISO 228; BSP tapered UNI-ISO 7; Metric ISO/R 262 |
| MATERIALS | Body, "OT" sleeve, stems and swivel bases | Brass UNI EN 12164 CW614N |
| | Sleeve, collar and back ring | POM copolymer ISO1043-1 |
| | Spring | Stainless steel AISI 301 austenitic |
| | Seals | NBR 70 DWGV-EN549 UL157 |

Additional technical informations

Each RAP production batch is tested according to severe cyclics "lot breaker" controls along all the production period, which include shape observation, leakage verification, functionality, at the working pressure of 8 bar. Then all samples taken from the lot are tested by a traction machine which simulate a breaking pressure of 50 bar. Here below are indicated the traction loads (in Newton) for each size:

| | | | | | | |
|----------------------|------|-------|-------|-------|-------|-------|
| TUBE DIAMETER | Ø4 | Ø6 | Ø8 | Ø10 | Ø12 | Ø14 |
| BREAKING LOAD | 63 N | 141 N | 251 N | 393 N | 566 N | 750 N |

Important note: The values refer to the resistance of the crimping gripper, "core part" of both fittings, the brass RAP and the technopolymer Tecno-RAP, whereby homogeneous. The breaking experimental values measured, according to the diameter, were from 1.2 to 2.5 times higher.

Additional information regarding the working temperatures:

Further to all the necessary assessments on the use of the fittings in operating conditions different from how suggested in the initial technical sheet must be considered, with reference to temperatures, the nominal data regarding the type of the used tube and the limit imposed by the most critical component.

Series TECNORAP: **-20° +50°**
 Series RAP: **-20° +70°**
 Series RAP-BLACK: **-20° +70°**
 Series RAP OT: **-20° +80°**
 Series OV: **-20° +120°**
 Series SS: **-20° +140°**

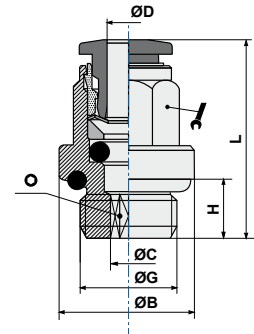
| WORKING PRESSURE AND BREAKING PRESSURE (BAR) AT DIFFERENT TEMPERATURES | | | | | | |
|--|---------------|----------------|---------------|----------------|---------------|----------------|
| Example | T-20°C | | T+23°C | | T+60°C | |
| Tube 6x4 colored | Working P bar | Breaking P bar | Working P bar | Breaking P bar | Working P bar | Breaking P bar |
| TPU | 18,7 | 74,8 | 10,0 | 40,0 | 5,2 | 20,8 |
| PA11 | 37,4 | 149,6 | 20,0 | 80,0 | 10,4 | 41,6 |
| PA12 | 48,6 | 168,3 | 26,0 | 90,0 | 10,4 | 36,0 |
| PE | 18,7 | 74,8 | 10,0 | 40,0 | 5,0 | 20,0 |

ART. **01**

Straight male adaptor (parallel)



| COD. | ØD | G | ØC | ØB | H | L | | | | |
|----------|----|-----|------|------|-----|-------|----|-----|-----|------|
| 01CH04M5 | 4 | M5 | 2 | 8 | 4 | 20,85 | 10 | 2 | 100 | 5,8 |
| 0104M5 | 4 | M5 | 2,5 | 8 | 4 | 20,85 | * | 2,5 | 100 | 4,1 |
| 0104M6 | 4 | M6 | 2,5 | 9 | 5 | 21,85 | * | 2,5 | 50 | 4,3 |
| 010418 | 4 | 1/8 | 2,5 | 13,5 | 5,5 | 20 | 9 | 2,5 | 50 | 7,4 |
| 010414 | 4 | 1/4 | 2,5 | 17 | 6,5 | 20 | 9 | 2,5 | 50 | 11 |
| 0106M5 | 6 | M5 | 2,5 | 8 | 4 | 24,4 | * | 2,5 | 50 | 6 |
| 0106M6 | 6 | M6 | 2,5 | 11 | 5 | 25,4 | * | 2,5 | 50 | 6,7 |
| 010618 | 6 | 1/8 | 4,1 | 13,5 | 5,5 | 25,4 | 11 | 4 | 50 | 10,1 |
| 010614 | 6 | 1/4 | 4,1 | 17 | 6,5 | 23,4 | 11 | 4 | 50 | 13,6 |
| 010818 | 8 | 1/8 | 5,1 | 13 | 5,5 | 26,8 | 13 | 5 | 50 | 11,3 |
| 010814 | 8 | 1/4 | 6,1 | 17 | 6,5 | 24 | 13 | 6 | 50 | 12,5 |
| 010838 | 8 | 3/8 | 6,1 | 20 | 7,5 | 24 | 13 | 6 | 50 | 18,9 |
| 010812 | 8 | 1/2 | 6,1 | 24 | 9 | 25 | 13 | 6 | 25 | 18 |
| 011018 | 10 | 1/8 | 5,1 | 13,5 | 5,5 | 30,3 | 16 | 4 | 25 | 19,6 |
| 011014 | 10 | 1/4 | 7,2 | 16 | 6,5 | 29,4 | 16 | 7 | 50 | 18,1 |
| 011038 | 10 | 3/8 | 8,2 | 21 | 7,5 | 29,4 | 16 | 8 | 50 | 24,9 |
| 011012 | 10 | 1/2 | 8,2 | 24 | 9 | 29,4 | 16 | 8 | 25 | 34,8 |
| 011214 | 12 | 1/4 | 7,2 | 16 | 6,5 | 32,2 | 19 | 7 | 25 | 26,3 |
| 011238 | 12 | 3/8 | 10,2 | 22 | 7,5 | 32,2 | 19 | 10 | 25 | 31,2 |
| 011212 | 12 | 1/2 | 10,2 | 24 | 9 | 31,7 | 19 | 10 | 25 | 37,3 |
| 011438 | 14 | 3/8 | 10,2 | 21 | 7,5 | 35 | 21 | 10 | 25 | 35,9 |
| 011412 | 14 | 1/2 | 12,2 | 25 | 9 | 34,3 | 21 | 12 | 25 | 39,3 |
| 011638 | 16 | 3/8 | 11,5 | 20 | 7,5 | 35 | 24 | 8 | 25 | 38,5 |
| 011612 | 16 | 1/2 | 15,5 | 24 | 10 | 37 | 24 | 10 | 25 | 45,5 |



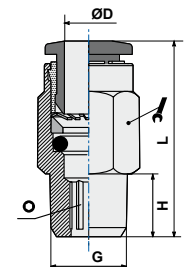
* codes without key flats having the following Ø:
0104M5 and 0104M6 = Ø9
0106M5 and 0106M6 = Ø11

ART. **01C**

Straight male adaptor (tapered)



| COD. | ØD | G | H | L | | | | |
|---------|----|-----|------|------|----|----|----|------|
| 01C0418 | 4 | 1/8 | 7,5 | 19,6 | 10 | 3 | 50 | 6,3 |
| 01C0414 | 4 | 1/4 | 9,5 | 18 | 14 | 3 | 50 | 12,1 |
| 01C0438 | 4 | 3/8 | 10,5 | 19,1 | 17 | 3 | 25 | 21,7 |
| 01C0618 | 6 | 1/8 | 7,5 | 20,3 | 12 | 4 | 50 | 7,1 |
| 01C0614 | 6 | 1/4 | 9,5 | 22,1 | 14 | 4 | 50 | 12,9 |
| 01C0638 | 6 | 3/8 | 10,5 | 20,1 | 17 | 4 | 25 | 21,1 |
| 01C0612 | 6 | 1/2 | 13,5 | 24,1 | 24 | 4 | 25 | 39,3 |
| 01C0818 | 8 | 1/8 | 7,5 | 25,7 | 14 | 5 | 50 | 11,2 |
| 01C0814 | 8 | 1/4 | 9,5 | 24,7 | 14 | 6 | 50 | 12,3 |
| 01C0838 | 8 | 3/8 | 10,5 | 21,7 | 17 | 6 | 50 | 18,3 |
| 01C0812 | 8 | 1/2 | 12,5 | 25,7 | 21 | 6 | 25 | 36,5 |
| 01C1018 | 10 | 1/8 | 7,5 | 29,3 | 17 | 4 | 25 | 18,1 |
| 01C1014 | 10 | 1/4 | 9,5 | 30,8 | 17 | 6 | 50 | 19,7 |
| 01C1038 | 10 | 3/8 | 10,5 | 28,3 | 17 | 8 | 50 | 20,5 |
| 01C1012 | 10 | 1/2 | 13,5 | 26,1 | 21 | 8 | 25 | 34,9 |
| 01C1218 | 12 | 1/8 | 7,5 | 30,8 | 21 | 4 | 25 | 28,4 |
| 01C1214 | 12 | 1/4 | 9,5 | 32,8 | 19 | 6 | 25 | 21,3 |
| 01C1238 | 12 | 3/8 | 10,5 | 29,8 | 21 | 8 | 25 | 29,7 |
| 01C1212 | 12 | 1/2 | 13,5 | 32,3 | 21 | 8 | 25 | 39 |
| 01C1438 | 14 | 3/8 | 10,5 | 34,2 | 21 | 8 | 25 | 34,9 |
| 01C1412 | 14 | 1/2 | 13,5 | 32,7 | 21 | 10 | 25 | 37,5 |

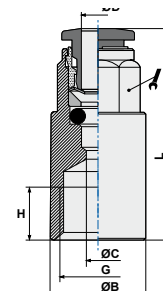


ART. **02**

Straight female adaptor



| COD. | ØD | G | ØC | ØB | H | L | | | |
|--------|----|-----|----|----|------|------|----|----|------|
| 020418 | 4 | 1/8 | 3 | 12 | 7,5 | 26,5 | 9 | 50 | 10,7 |
| 020414 | 4 | 1/4 | 3 | 17 | 11,5 | 29,5 | 9 | 50 | 19,1 |
| 020618 | 6 | 1/8 | 5 | 12 | 7,5 | 29,1 | 11 | 50 | 11 |
| 020614 | 6 | 1/4 | 5 | 17 | 11,5 | 31,9 | 11 | 50 | 16,8 |
| 020818 | 8 | 1/8 | 7 | 12 | 7,5 | 28 | 13 | 50 | 10,9 |
| 020814 | 8 | 1/4 | 7 | 17 | 11,5 | 33,3 | 13 | 50 | 19,2 |

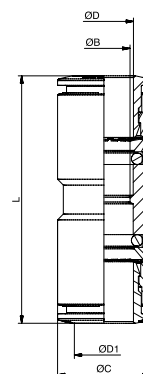


ART. **03**

Straight connector



| COD. | ØD | ØD1 | ØB | ØC | L | | |
|--------|----|-----|----|----|------|----|------|
| 030400 | 4 | 4 | 3 | 11 | 32,7 | 50 | 5,7 |
| 030600 | 6 | 6 | 5 | 13 | 37,3 | 50 | 9,5 |
| 030800 | 8 | 8 | 7 | 13 | 38,6 | 50 | 12,5 |
| 031000 | 10 | 10 | 9 | 18 | 43,3 | 50 | 17,8 |
| 031200 | 12 | 12 | 11 | 21 | 46,4 | 25 | 32,5 |
| 031400 | 14 | 14 | 13 | 21 | 50 | 25 | 36 |

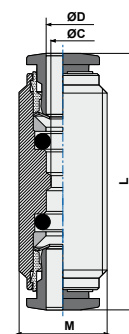


ART. **03F**

Threaded connector



| COD. | ØD | ØC | M | L | | |
|---------|----|----|------|------|----|------|
| 03F0400 | 4 | 3 | 11x1 | 32,7 | 50 | 10,7 |
| 03F0600 | 6 | 5 | 14x1 | 37,3 | 50 | 18,7 |
| 03F0800 | 8 | 7 | 16x1 | 38,6 | 50 | 24,1 |
| 03F1000 | 10 | 9 | 18x1 | 43,3 | 50 | 33,4 |
| 03F1200 | 12 | 11 | 22x1 | 46,4 | 25 | 53,3 |
| 03F1400 | 14 | 13 | 24x1 | 50 | 25 | 61,2 |

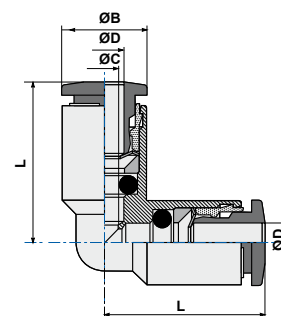


ART. **04**

Elbow connector



| COD. | ØD | ØC | ØB | L | | |
|--------|----|----|----|-------|----|------|
| 040400 | 4 | 3 | 9 | 18,55 | 50 | 7,6 |
| 040600 | 6 | 5 | 11 | 20,4 | 50 | 8,6 |
| 040800 | 8 | 7 | 13 | 23,3 | 50 | 13,7 |
| 041000 | 10 | 9 | 16 | 27,1 | 50 | 20,1 |
| 041200 | 12 | 11 | 19 | 29,3 | 25 | 47,2 |
| 041400 | 14 | 13 | 21 | 31,7 | 25 | 45 |

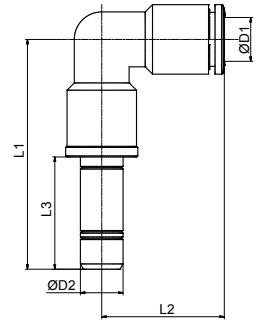


ART. **04L0**

Plug-in elbow connector



| COD. | ØD1 | ØD2 | L1 | L2 | L3 | | |
|--------|-----|-----|------|-------|------|----|------|
| 0404L0 | 4 | 4 | 34,5 | 18.55 | 16,7 | 50 | 6,6 |
| 0406L0 | 6 | 6 | 39 | 20.4 | 19,5 | 50 | 7,5 |
| 0408L0 | 8 | 8 | 43 | 23.8 | 21 | 50 | 22,4 |
| 0410L0 | 10 | 10 | 51 | 27.1 | 24 | 25 | 27 |
| 0412L0 | 12 | 12 | 54 | 29.3 | 25 | 25 | 64 |

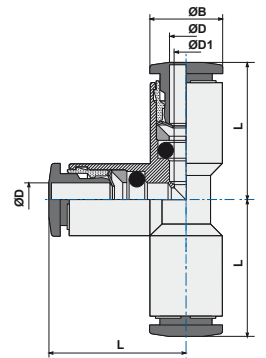


ART. **05**

T connector



| COD. | ØD | ØD1 | ØB | L | | |
|--------|----|-----|----|-------|----|------|
| 050400 | 4 | 3 | 9 | 18.55 | 50 | 10,8 |
| 050600 | 6 | 5 | 11 | 21.2 | 50 | 12,2 |
| 050800 | 8 | 7 | 13 | 23.3 | 50 | 16,4 |
| 051000 | 10 | 8 | 16 | 26.9 | 25 | 30,6 |
| 051200 | 12 | 10 | 19 | 29.3 | 25 | 56 |
| 051400 | 14 | 12 | 21 | 31.7 | 10 | 58,3 |

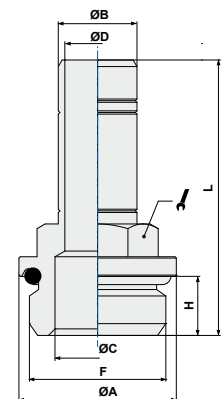


ART. **06**

Adaptor parallel (short)

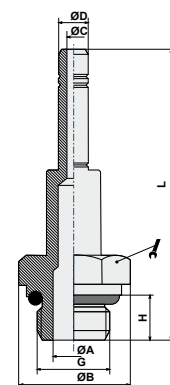


| COD. | ØB | F | ØA | ØC | ØD | H | L | | | |
|--------|----|-----|----|-----|-----|-----|------|----|----|------|
| 0604M5 | 4 | M5 | 8 | 2 | 2 | 4 | 24,7 | 8 | 50 | 3,6 |
| 0604M6 | 4 | M6 | 9 | 2 | 2 | 5 | 25,7 | 8 | 50 | 3,7 |
| 060418 | 4 | 1/8 | 13 | 5,5 | 2 | 5,5 | 27,7 | 13 | 50 | 9,1 |
| 060414 | 4 | 1/4 | 16 | 7,5 | 2 | 6,5 | 29,2 | 13 | 50 | 11,2 |
| 0606M5 | 6 | M5 | 8 | 2,6 | 2,6 | 4 | 27,5 | 8 | 50 | 4,6 |
| 060618 | 6 | 1/8 | 13 | 5,5 | 4 | 5,5 | 30,5 | 13 | 50 | 9,6 |
| 060614 | 6 | 1/4 | 16 | 7,5 | 4 | 6,5 | 33,5 | 13 | 50 | 12 |
| 060818 | 8 | 1/8 | 13 | 6 | 6 | 5,5 | 32,0 | 13 | 50 | 10,5 |
| 060814 | 8 | 1/4 | 16 | 7,5 | 6 | 6,5 | 33,5 | 13 | 50 | 31,1 |
| 060838 | 8 | 3/8 | 20 | 9 | 6 | 7,5 | 35,5 | 13 | 50 | 18,9 |
| 061018 | 10 | 1/8 | 13 | 6 | 6 | 5,5 | 35,0 | 13 | 50 | 16,7 |
| 061014 | 10 | 1/4 | 16 | 8 | 8 | 6,5 | 38 | 13 | 50 | 14,1 |
| 061038 | 10 | 3/8 | 20 | 8 | 8 | 7,5 | 39,5 | 13 | 50 | 20,8 |
| 061214 | 12 | 1/4 | 16 | 8 | 8 | 6,5 | 37,5 | 13 | 25 | 21,5 |
| 061238 | 12 | 3/8 | 20 | 11 | 10 | 7,5 | 40,5 | 13 | 25 | 21,1 |
| 061212 | 12 | 1/2 | 24 | 13 | 10 | 9 | 42,0 | 16 | 25 | 31,3 |
| 061438 | 14 | 3/8 | 20 | 12 | 12 | 7,5 | 43,0 | 16 | 25 | 22,3 |
| 061412 | 14 | 1/2 | 24 | 13 | 12 | 9 | 44,5 | 16 | 25 | 32,2 |

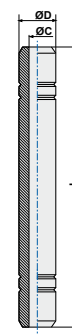


ART. 60
Adaptor parallel (long)

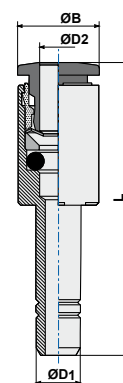

| COD. | ØD | G | ØC | ØB | H | L | ØA | | | |
|--------|----|-----|----|----|-----|------|-----|----|----|------|
| 600418 | 4 | 1/8 | 2 | 13 | 5,5 | 39,2 | 6 | 13 | 50 | 10,2 |
| 600618 | 6 | 1/8 | 4 | 13 | 5,5 | 44,5 | 5,5 | 13 | 50 | 13,5 |
| 600614 | 6 | 1/4 | 4 | 16 | 6,5 | 48 | 7,5 | 13 | 50 | 18,1 |
| 600818 | 8 | 1/8 | 6 | 13 | 5,5 | 48 | 6 | 13 | 50 | 19,1 |
| 600814 | 8 | 1/4 | 6 | 16 | 6,5 | 49,5 | 7,5 | 13 | 50 | 19,8 |
| 600838 | 8 | 3/8 | 6 | 20 | 7,5 | 51,5 | 9 | 13 | 50 | 27 |
| 601038 | 10 | 3/8 | 8 | 20 | 7,5 | 56 | 9 | 13 | 25 | 33,2 |


ART. 07
Connector

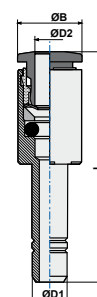

| COD. | ØD | ØB | L | | |
|--------|----|----|------|-----|------|
| 070400 | 4 | 2 | 33,4 | 100 | 2,6 |
| 070600 | 6 | 4 | 39 | 50 | 5 |
| 070800 | 8 | 6 | 42 | 50 | 7,5 |
| 071000 | 10 | 8 | 48 | 50 | 10,8 |
| 071200 | 12 | 10 | 48 | 50 | 14,3 |


ART. 08
Plug-in reducer


| COD. | ØD1 | ØD2 | ØB | L | | |
|--------|-----|-----|----|-------|----|------|
| 080604 | 6 | 4 | 9 | 32,85 | 50 | 5,5 |
| 080804 | 8 | 4 | 9 | 34 | 50 | 9,7 |
| 080806 | 8 | 6 | 11 | 36,9 | 50 | 8,6 |
| 081006 | 10 | 6 | 11 | 39,9 | 50 | 15,5 |
| 081008 | 10 | 8 | 13 | 39,3 | 50 | 11,8 |
| 081208 | 12 | 8 | 13 | 39,8 | 25 | 18,8 |
| 081210 | 12 | 10 | 16 | 41,9 | 25 | 16,6 |
| 081406 | 14 | 6 | 15 | 36,9 | 25 | 36 |


ART. 08E
Plug-in increaser


| COD. | ØD1 | ØD2 | ØB | L | | |
|---------|-----|-----|----|------|----|------|
| 08E0406 | 4 | 6 | 11 | 40,4 | 50 | 7,5 |
| 08E0608 | 6 | 8 | 13 | 44 | 50 | 11,3 |

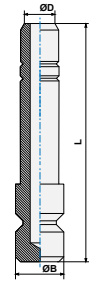


ART. **09**

Plug



| COD. | ØD | ØB | L | | |
|--------|----|----|------|----|------|
| 090400 | 4 | 5 | 26 | 50 | 3,1 |
| 090600 | 6 | 7 | 29 | 50 | 4,7 |
| 090800 | 8 | 9 | 31,5 | 50 | 7,7 |
| 091000 | 10 | 11 | 35 | 50 | 10,8 |
| 091200 | 12 | 13 | 37 | 25 | 14,5 |

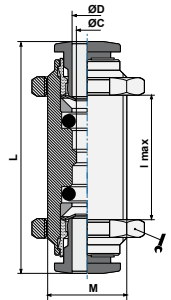


ART. **10**

Bulkhead connector



| COD. | ØD | ØC | M | lmax | L | | | |
|--------|----|----|------|------|------|----|----|------|
| 100400 | 4 | 3 | 11x1 | 14 | 32,7 | 14 | 50 | 15,8 |
| 100600 | 6 | 5 | 14x1 | 14,5 | 37,3 | 17 | 50 | 25,9 |
| 100800 | 8 | 7 | 16x1 | 15 | 38,6 | 18 | 50 | 30 |
| 101000 | 10 | 9 | 18x1 | 16,5 | 43,3 | 21 | 25 | 44,4 |
| 101200 | 12 | 11 | 22x1 | 18,6 | 46,4 | 26 | 25 | 70,6 |
| 101400 | 14 | 13 | 24x1 | 21,7 | 50 | 27 | 25 | 79,9 |

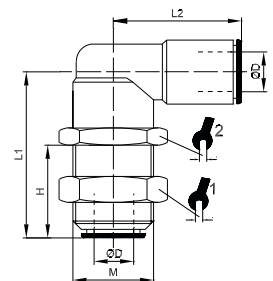


ART. **10L**

Elbow bulkhead



| COD. | ØD | M | H | L1 | L2 | | | | |
|---------|----|-------|------|------|----|----|----|----|------|
| 10L0400 | 4 | M11x1 | 12,5 | 25,5 | 20 | 13 | 13 | 50 | 22,4 |
| 10L0600 | 6 | M14x1 | 15 | 28 | 21 | 17 | 17 | 50 | 31,1 |
| 10L0800 | 8 | M16x1 | 17 | 30,5 | 24 | 18 | 18 | 50 | 35 |
| 10L1000 | 10 | M18x1 | 19 | 35 | 27 | 21 | 21 | 25 | 52,7 |

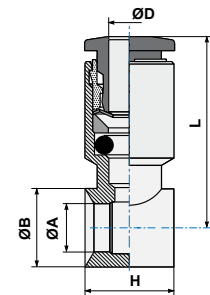


ART. **13**

Single banjo body



| COD. | ØD | G* | ØA | ØB | H | L | | |
|---------|----|-----|-------|----|----|-------|----|------|
| 1304M5 | 4 | M5 | 5 | 9 | 9 | 19,85 | 50 | 5,9 |
| 130418 | 4 | 1/8 | 9,9 | 14 | 15 | 21,65 | 50 | 13,4 |
| 130618 | 6 | 1/8 | 9,9 | 14 | 15 | 24,9 | 50 | 14,2 |
| 130614 | 6 | 1/4 | 13,3 | 18 | 17 | 26,1 | 50 | 20,4 |
| 130818 | 8 | 1/8 | 9,9 | 14 | 15 | 25,15 | 50 | 14,6 |
| 130814 | 8 | 1/4 | 13,3 | 18 | 17 | 26,8 | 50 | 20,8 |
| 130838 | 8 | 3/8 | 16,75 | 21 | 20 | 28,3 | 50 | 27,6 |
| 131014 | 10 | 1/4 | 13,3 | 18 | 17 | 28,9 | 50 | 25,7 |
| 131038 | 10 | 3/8 | 16,75 | 21 | 20 | 30,35 | 25 | 30 |
| 131214 | 12 | 1/4 | 13,3 | 18 | 17 | 30,7 | 25 | 28,1 |
| 131238 | 12 | 3/8 | 16,75 | 21 | 20 | 31,6 | 25 | 32,6 |
| 131212 | 12 | 1/2 | 21 | 26 | 24 | 35,15 | 25 | 47,3 |
| 13R04M5 | 4 | M5 | 6 | 9 | 10 | 19,85 | 50 | 5,4 |
| 13R06M5 | 6 | M5 | 6 | 9 | 10 | 22,1 | 50 | 7,9 |



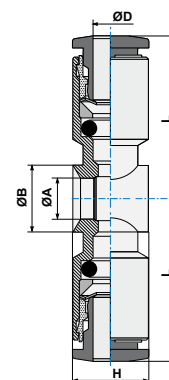
G* = stem thread. See page 95 of stem section

ART. **14**

Double banjo body



| COD. | ØD | G* | ØA | ØB | H | L | | |
|--------|----|-----|-------|----|----|------|----|------|
| 140618 | 6 | 1/8 | 9,9 | 14 | 15 | 24,3 | 50 | 17,2 |
| 140818 | 8 | 1/8 | 9,9 | 14 | 15 | 24,8 | 50 | 18 |
| 140814 | 8 | 1/4 | 13,3 | 18 | 17 | 26,5 | 50 | 27,6 |
| 140838 | 8 | 3/8 | 16,75 | 21 | 20 | 28 | 50 | 32,2 |
| 141014 | 10 | 1/4 | 13,3 | 18 | 17 | 28,4 | 50 | 31,4 |
| 141038 | 10 | 3/8 | 16,75 | 21 | 20 | 29,9 | 25 | 36,9 |



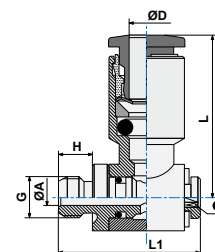
G* = Stem thread. See page 95 of stem section

ART. **15**

Complete single banjo (rotating under pressure)



| COD. | ØD | G | ØA | H | L1 | L | ⊙ | | |
|--------|----|-----|-----|-----|------|-------|-----|----|------|
| 1504M5 | 4 | M5 | 2 | 4 | 16,8 | 19,85 | 2,5 | 50 | 8,4 |
| 1504M6 | 4 | M6 | 2 | 5 | 17,8 | 19,85 | 2,5 | 50 | 8,5 |
| 150418 | 4 | 1/8 | 5,5 | 5,5 | 24,5 | 21,65 | 3 | 50 | 22,9 |
| 1506M5 | 6 | M5 | 2 | 4 | 16,8 | 22,4 | 2,5 | 50 | 9,3 |
| 150618 | 6 | 1/8 | 5,5 | 5,5 | 24,5 | 24,9 | 3 | 50 | 23,3 |
| 150614 | 6 | 1/4 | 7,8 | 6,5 | 27,8 | 26,1 | 4 | 50 | 38,8 |
| 150818 | 8 | 1/8 | 5,5 | 5,5 | 24,5 | 25,15 | 3 | 50 | 24,2 |
| 150814 | 8 | 1/4 | 7,8 | 6,5 | 27,8 | 26,8 | 4 | 50 | 39,4 |
| 150838 | 8 | 3/8 | 10 | 7,5 | 32,5 | 28,3 | 5 | 25 | 60 |
| 151014 | 10 | 1/4 | 7,8 | 6,5 | 27,8 | 28,9 | 4 | 25 | 44,6 |
| 151038 | 10 | 3/8 | 10 | 7,5 | 32,5 | 30,35 | 5 | 25 | 63,5 |
| 151214 | 12 | 1/4 | 7,8 | 6,5 | 27,8 | 30,85 | 4 | 25 | 46,9 |
| 151238 | 12 | 3/8 | 10 | 7,5 | 32,5 | 31,6 | 5 | 25 | 65,2 |
| 151212 | 12 | 1/2 | 12 | 9 | 38,8 | 35,15 | 8 | 10 | 110 |

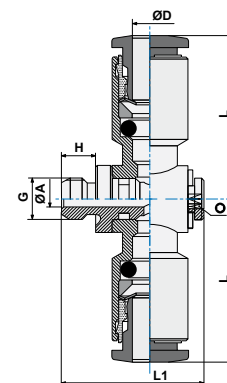


ART. **16**

Complete double banjo (rotating under pressure)



| COD. | ØD | G | ØA | H | L1 | L | ⊙ | | |
|--------|----|-----|-----|-----|------|------|---|----|------|
| 160618 | 6 | 1/8 | 5,5 | 5,5 | 24,5 | 24,3 | 3 | 50 | 27,4 |
| 160818 | 8 | 1/8 | 5,5 | 5,5 | 25 | 24,8 | 3 | 50 | 27,4 |
| 160814 | 8 | 1/4 | 7,8 | 6,5 | 28 | 26,5 | 4 | 25 | 32,1 |
| 160838 | 8 | 3/8 | 10 | 7,5 | 32,5 | 28 | 5 | 25 | 39,8 |
| 161014 | 10 | 1/4 | 7,8 | 6,5 | 28 | 28,4 | 4 | 25 | 49,9 |
| 161038 | 10 | 3/8 | 10 | 7,5 | 32,5 | 29,9 | 5 | 25 | 55,1 |

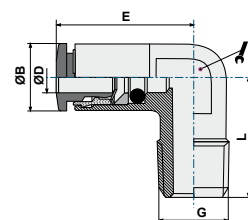


ART. **19**

Elbow male adapter



| COD. | ØD | G | ØB | E | L | | | |
|--------|----|-----|----|-------|------|----|-----|------|
| 190418 | 4 | 1/8 | 9 | 19,35 | 16,5 | 10 | 100 | 11,6 |
| 190618 | 6 | 1/8 | 11 | 24,4 | 16,5 | 10 | 100 | 13,3 |
| 190614 | 6 | 1/4 | 11 | 25,4 | 22 | 11 | 100 | 19,3 |
| 190818 | 8 | 1/8 | 13 | 25,3 | 18,5 | 11 | 100 | 16,5 |
| 190814 | 8 | 1/4 | 13 | 25,3 | 22,0 | 11 | 100 | 19,1 |
| 191014 | 10 | 1/4 | 16 | 26,9 | 23,5 | 13 | 50 | 25,4 |

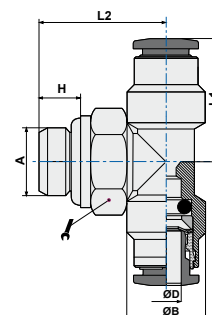


ART. **20**

Swivel male stud T (parallel)



| COD. | ØD | A | H | ØB | L1 | L2 | | | |
|--------|----|-----|-----|------|------|------|----|----|------|
| 2004M5 | 4 | M5 | 3,5 | 11 | 18,1 | 15,7 | 10 | 50 | 16,6 |
| 200418 | 4 | 1/8 | 5,5 | 11,3 | 18,1 | 18,5 | 13 | 50 | 21,5 |
| 200414 | 4 | 1/4 | 6,5 | 11,3 | 18,1 | 20,5 | 16 | 50 | 28,7 |
| 2006M5 | 6 | M5 | 3,5 | 12 | 20,1 | 15,7 | 10 | 50 | 16 |
| 200618 | 6 | 1/8 | 5,5 | 11 | 20,1 | 18,5 | 13 | 50 | 20,1 |
| 200614 | 6 | 1/4 | 6,5 | 11 | 20,1 | 20,5 | 16 | 50 | 27,4 |
| 200818 | 8 | 1/8 | 5,5 | 13 | 23,6 | 20,5 | 13 | 50 | 25,8 |
| 200814 | 8 | 1/4 | 6,5 | 13 | 23,6 | 21,3 | 16 | 50 | 29,8 |
| 200838 | 8 | 3/8 | 7,5 | 13 | 23,6 | 22,8 | 16 | 25 | 36 |
| 201014 | 10 | 1/4 | 6,5 | 16 | 28,6 | 25,7 | 16 | 25 | 50,3 |
| 201038 | 10 | 3/8 | 7,5 | 16 | 28,6 | 25,7 | 17 | 25 | 50,3 |

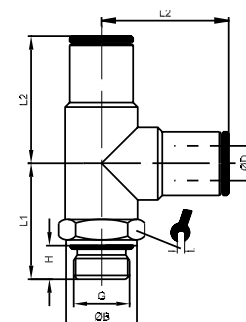


ART. **21**

Swivel male branch T (parallel)

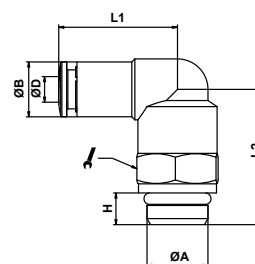


| COD. | ØD | G | H | ØB | L1 | L2 | | | |
|--------|----|------|-----|----|------|------|----|----|------|
| 2104M5 | 4 | M5 | 4 | 8 | 16,5 | 19 | 9 | 50 | 14,7 |
| 210418 | 4 | G1/8 | 5,5 | 13 | 18,5 | 17,5 | 13 | 50 | 26,8 |
| 210414 | 4 | G1/4 | 6,5 | 16 | 22,5 | 19 | 13 | 50 | 29,7 |
| 210618 | 6 | G1/8 | 5,5 | 13 | 20 | 21 | 13 | 50 | 29 |
| 210614 | 6 | G1/4 | 6,5 | 16 | 24 | 21 | 13 | 50 | 31,8 |
| 210818 | 8 | G1/8 | 5,5 | 13 | 20 | 23 | 13 | 50 | 29,6 |
| 210814 | 8 | G1/4 | 6,5 | 16 | 24 | 23 | 13 | 50 | 32,6 |
| 210838 | 8 | G3/8 | 4,5 | 20 | 25,5 | 23 | 17 | 25 | 37,2 |
| 211014 | 10 | G1/4 | 6,5 | 16 | 24 | 27 | 16 | 25 | 51,5 |

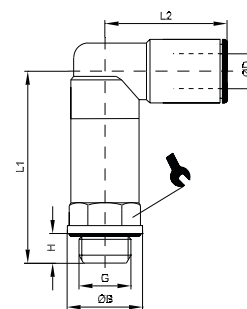


ART. 22
Swivel elbow male adaptor (parallel)

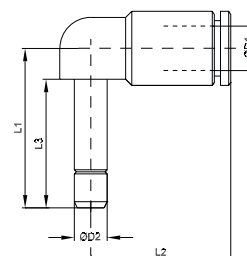

| COD. | ØD | A | H | ØB | L1 | L2 | | | |
|---------|----|---------|-----|-----|-------|------|----|-----|------|
| 2204M5 | 4 | M5 | 4 | 9,1 | 18,55 | 14,8 | 9 | 100 | 8,9 |
| 2204M12 | 4 | M12x1,5 | 6,5 | 9,1 | 20,35 | 22,4 | 13 | 100 | 10 |
| 220418 | 4 | 1/8 | 5,5 | 9,1 | 20,35 | 19,9 | 13 | 100 | 18,1 |
| 220414 | 4 | 1/4 | 6,5 | 9,1 | 20,35 | 22,7 | 13 | 100 | 21,6 |
| 220438 | 4 | 3/8 | 7,5 | 9,1 | 20,35 | 24,9 | 13 | 100 | 21,9 |
| 2206M5 | 6 | M5 | 4 | 11 | 22,4 | 15 | 9 | 100 | 10,6 |
| 2206M12 | 6 | M12x1,5 | 6,5 | 11 | 23,9 | 22,2 | 13 | 100 | 12,7 |
| 220618 | 6 | 1/8 | 5,5 | 11 | 23,9 | 19,7 | 13 | 100 | 19,5 |
| 220614 | 6 | 1/4 | 6,5 | 11 | 23,9 | 22,7 | 13 | 100 | 22,6 |
| 220638 | 6 | 3/8 | 7,5 | 11 | 23,9 | 24,7 | 13 | 100 | 28,3 |
| 2208M12 | 8 | M12x1,5 | 6,5 | 13 | 24,3 | 22,2 | 13 | 100 | 21,3 |
| 220818 | 8 | 1/8 | 5,5 | 13 | 23,95 | 19,7 | 13 | 100 | 18,8 |
| 220814 | 8 | 1/4 | 6,5 | 13 | 24,3 | 22,7 | 13 | 50 | 21,9 |
| 220838 | 8 | 3/8 | 7,5 | 13 | 24,3 | 24,7 | 13 | 50 | 28,4 |
| 221014 | 10 | 1/4 | 6,5 | 16 | 28,4 | 22,6 | 16 | 50 | 32,8 |
| 221038 | 10 | 3/8 | 7,5 | 16 | 28,4 | 26,6 | 16 | 50 | 38,8 |
| 221012 | 10 | 1/2 | 9 | 16 | 28,4 | 28,1 | 16 | 50 | 43,5 |
| 221214 | 12 | 1/4 | 6,5 | 19 | 31,4 | 29,2 | 16 | 25 | 60,3 |
| 221238 | 12 | 3/8 | 7,5 | 19 | 31,4 | 27,2 | 20 | 25 | 58,7 |
| 221212 | 12 | 1/2 | 9 | 19 | 31,4 | 31,7 | 20 | 25 | 68,8 |
| 221438 | 14 | 3/8 | 7,5 | 21 | 32,0 | 28,5 | 20 | 25 | 57,5 |
| 221412 | 14 | 1/2 | 9 | 21 | 32,0 | 33,5 | 20 | 25 | 71 |


ART. 22L
Swivel longer elbow male adaptor (parallel)


| COD. | ØD | G | ØB | H | L1 | L2 | | | |
|---------|----|------|----|-----|------|-------|----|----|------|
| 22L0418 | 4 | G1/8 | 13 | 5,5 | 33,2 | 20,35 | 13 | 25 | 29,1 |
| 22L0414 | 4 | G1/4 | 16 | 6,5 | 38,2 | 20,35 | 13 | 25 | 32,5 |
| 22L0618 | 6 | G1/8 | 13 | 5,5 | 33 | 23,9 | 13 | 25 | 30,5 |
| 22L0614 | 6 | G1/4 | 16 | 6,5 | 38 | 23,9 | 13 | 25 | 34,2 |
| 22L0818 | 8 | G1/8 | 13 | 5,5 | 33 | 24 | 13 | 25 | 30,2 |
| 22L0814 | 8 | G1/4 | 16 | 6,5 | 38 | 24,3 | 13 | 25 | 33,7 |
| 22L1014 | 10 | G1/4 | 16 | 6,5 | 40,5 | 28,4 | 16 | 25 | 52,5 |


ART. 22L0
Plug-in elbow connector


| COD. | ØD1 | ØD2 | L1 | L2 | L3 | | |
|--------|-----|-----|------|-------|------|----|------|
| 2204L0 | 4 | 4 | 25,2 | 20,35 | 16,2 | 50 | 8,9 |
| 2206L0 | 6 | 6 | 28,5 | 23,9 | 19,5 | 50 | 19,1 |
| 2208L0 | 8 | 8 | 30 | 24,3 | 21 | 50 | 21,6 |
| 2210L0 | 10 | 10 | 35 | 28,4 | 24 | 25 | 26,5 |
| 2212L0 | 12 | 12 | 38,5 | 31,4 | 25 | 25 | 31,7 |

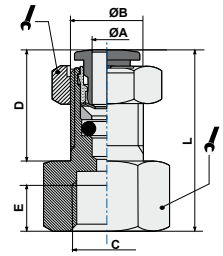


ART. **25**

Female bulkhead



| COD. | ØA | C | ØB | D | E | L | | | |
|--------|----|-----|-------|------|------|------|----|----|------|
| 250418 | 4 | 1/8 | M12x1 | 13,5 | 8,5 | 23,5 | 14 | 25 | 15,8 |
| 250618 | 6 | 1/8 | M14x1 | 16,8 | 8,5 | 29,3 | 17 | 25 | 23,7 |
| 250614 | 6 | 1/4 | M14x1 | 16,8 | 11,0 | 24,6 | 17 | 25 | 26,8 |
| 250818 | 8 | 1/8 | M16x1 | 20,7 | 8,5 | 32,2 | 19 | 25 | 29,7 |
| 250814 | 8 | 1/4 | M16x1 | 20,7 | 11,0 | 26,8 | 19 | 25 | 36,5 |

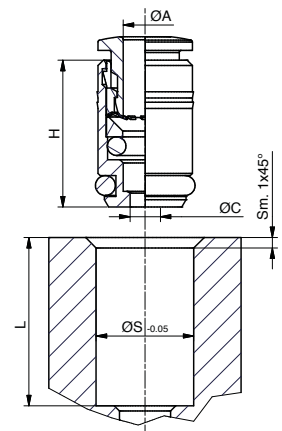


ART. **27**

Cartridge

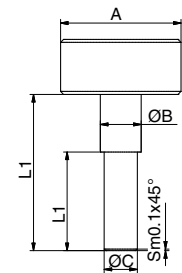


| COD. | ØD | ØC | H | ØS | L | | |
|--------|----|-----|----|------|------|-----|-----|
| 270400 | 4 | 2,9 | 14 | 9,1 | 13,5 | 100 | 1,3 |
| 270600 | 6 | 4,5 | 16 | 11,1 | 15,5 | 50 | 4,8 |
| 270800 | 8 | 6,5 | 17 | 13,6 | 16,5 | 50 | 3,2 |



Assembly instructions

| Ø Cartrige | ØA | ØB | ØC | L1 | L2 |
|------------|----|----|----------|------|------|
| Ø 4 | 20 | 4 | 3.5 -0.1 | 20 | 12,5 |
| Ø 6 | 20 | 6 | 5.1 -0.1 | 20 | 12,5 |
| Ø 8 | 20 | 8 | 7.1 -0.1 | 20.5 | 12,5 |



| COD. | ØD | ØC | ØB | H |
|--------|----|-----|------|----|
| 270400 | 4 | 2.9 | 7.8 | 14 |
| 270600 | 6 | 5 | 10 | 16 |
| 270800 | 8 | 7 | 11.8 | 17 |

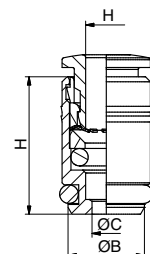
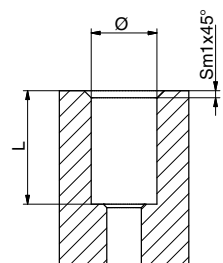


Table for housing
on plastic material

| Ø | L | Ø Cartrige |
|-------------|-----------|------------|
| 9 -0.05 | 13.5 -0.1 | Ø 4 |
| 10.97 -0.05 | 15.5 -0.1 | Ø 6 |
| 12.95 -0.05 | 16.5 -0.1 | Ø 8 |

Table for housing
on aluminium

| Ø Cartrige | Ø | L |
|------------|------------|-----------|
| Ø 4 | 9.1 -0.05 | 13.5 -0.1 |
| Ø 6 | 11.1 -0.05 | 15.5 -0.1 |
| Ø 8 | 13.6 -0.05 | 16.5 -0.1 |

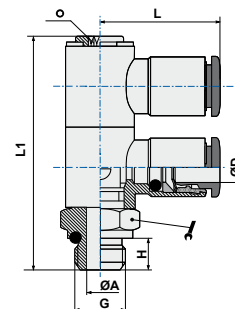


ART. **33**

Swivel double banjo stem



| COD. | ØD | G | ØA | H | L1 | L | | | | |
|--------|----|-----|-----|-----|------|-------|----|---|----|-------|
| 330418 | 4 | 1/8 | 5,5 | 5,5 | 43,3 | 21,65 | 14 | 3 | 25 | 44,41 |
| 330618 | 6 | 1/8 | 5,5 | 5,5 | 43,3 | 24,9 | 14 | 3 | 25 | 45,5 |
| 330614 | 6 | 1/4 | 7,8 | 6,5 | 50 | 26,1 | 18 | 4 | 25 | 75,6 |
| 330818 | 8 | 1/8 | 5,5 | 5,5 | 43,3 | 25,1 | 14 | 3 | 25 | 48,5 |
| 330814 | 8 | 1/4 | 7,8 | 6,5 | 50 | 26,8 | 18 | 4 | 25 | 76,4 |
| 331014 | 10 | 1/4 | 7,8 | 6,5 | 50 | 28,9 | 18 | 4 | 25 | 87 |

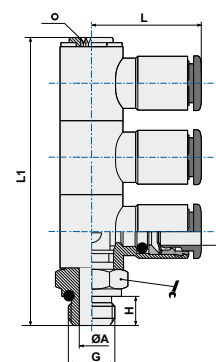


ART. **34**

Swivel triple banjo stem



| COD. | ØD | G | ØA | H | L1 | L | | | | |
|--------|----|-----|-----|-----|------|-------|----|---|----|-------|
| 340418 | 4 | 1/8 | 5,5 | 5,5 | 58,4 | 21,65 | 14 | 3 | 10 | 54,1 |
| 340618 | 6 | 1/8 | 5,5 | 5,5 | 58,4 | 24,9 | 14 | 3 | 10 | 63,9 |
| 340614 | 6 | 1/4 | 7,8 | 6,5 | 67,1 | 26,1 | 18 | 4 | 10 | 65,6 |
| 340818 | 8 | 1/8 | 5,5 | 5,5 | 58,4 | 25,1 | 14 | 3 | 10 | 66,2 |
| 340814 | 8 | 1/4 | 7,8 | 6,5 | 67,1 | 26,8 | 18 | 4 | 10 | 108 |
| 341014 | 10 | 1/4 | 7,8 | 6,5 | 67,1 | 28,9 | 18 | 4 | 10 | 151,1 |

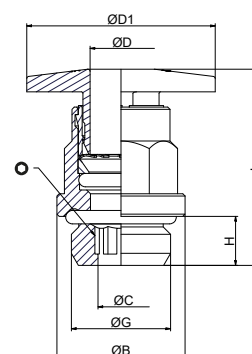


ART. **01AM**

Straight male adaptor (parallel) larger pusher



| COD. | ØD | ØD1 | G | ØC | ØB | H | L | | | |
|----------|----|-----|-----|-----|----|-----|------|----|---|----|
| 010814AM | 8 | 25 | 1/4 | 6,2 | 17 | 6,5 | 25,6 | 13 | 6 | 13 |

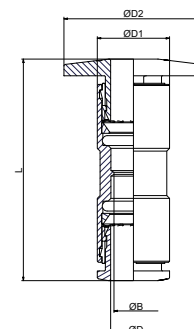


ART. **03AM**

Straight connector larger pusher



| COD. | ØD | ØD1 | ØD2 | ØB | L | |
|----------|----|-----|-----|----|------|------|
| 030800AM | 8 | 15 | 25 | 7 | 39,9 | 12,7 |

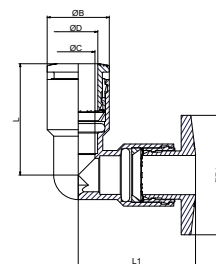


ART. **04AM**

Elbow connector larger pusher



| COD. | ØD | ØD1 | ØC | ØB | L1 | L | g |
|----------|----|-----|----|----|------|------|----|
| 040800AM | 8 | 25 | 7 | 13 | 24,6 | 23,3 | 15 |

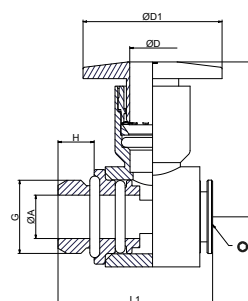


ART. **15AM**

Complete single banjo (rotating under pressure) larger pusher



| COD. | ØD | ØD1 | G | ØA | H | L | L1 | Ø | g |
|----------|----|-----|-----|-----|-----|------|------|---|----|
| 150814AM | 8 | 25 | 1/4 | 7,8 | 6,5 | 27,9 | 27,8 | 4 | 40 |

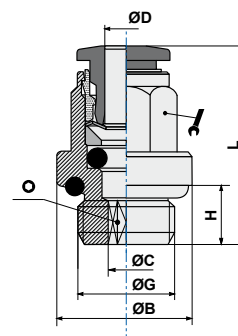


ART. **B01**

Straight male adaptor (parallel)



| COD. | ØD | G | ØC | ØB | H | L | | | | |
|---------|----|-----|------|------|-----|-------|----|-----|-----|------|
| B0104M5 | 4 | M5 | 2 | 8 | 4 | 20,85 | * | 2 | 100 | 5,8 |
| B0104M6 | 4 | M6 | 2,5 | 9 | 5 | 21,85 | * | 2,5 | 50 | 4,3 |
| B010418 | 4 | 1/8 | 2,5 | 13,5 | 5,5 | 20 | 9 | 2,5 | 50 | 7,4 |
| B010414 | 4 | 1/4 | 2,5 | 17 | 6,5 | 20 | 9 | 2,5 | 50 | 11 |
| B0106M5 | 6 | M5 | 2,5 | 8 | 4 | 24,4 | * | 2,5 | 50 | 6 |
| B0106M6 | 6 | M6 | 2,5 | 11 | 5 | 25,4 | * | 2,5 | 50 | 6,7 |
| B010618 | 6 | 1/8 | 4,1 | 13,5 | 5,5 | 25,4 | 11 | 4 | 50 | 10,1 |
| B010614 | 6 | 1/4 | 4,1 | 17 | 6,5 | 23,4 | 11 | 4 | 50 | 13,6 |
| B010818 | 8 | 1/8 | 5,1 | 13 | 5,5 | 26,8 | 13 | 5 | 50 | 11,3 |
| B010814 | 8 | 1/4 | 6,1 | 17 | 6,5 | 24 | 13 | 6 | 50 | 12,5 |
| B010838 | 8 | 3/8 | 6,1 | 20 | 7,5 | 24 | 13 | 6 | 50 | 18,9 |
| B010812 | 8 | 1/2 | 6,1 | 24 | 9 | 25 | 13 | 6 | 25 | 18 |
| B011018 | 10 | 1/8 | 5,1 | 13,5 | 5,5 | 30,3 | 16 | 4 | 25 | 19,6 |
| B011014 | 10 | 1/4 | 7,2 | 16 | 6,5 | 29,4 | 16 | 7 | 50 | 18,1 |
| B011038 | 10 | 3/8 | 8,2 | 21 | 7,5 | 29,4 | 16 | 8 | 50 | 24,9 |
| B011012 | 10 | 1/2 | 8,2 | 24 | 9 | 29,4 | 16 | 8 | 25 | 34,8 |
| B011214 | 12 | 1/4 | 7,2 | 16 | 6,5 | 32,2 | 19 | 7 | 25 | 26,3 |
| B011238 | 12 | 3/8 | 10,2 | 22 | 7,5 | 32,2 | 19 | 10 | 25 | 31,2 |
| B011212 | 12 | 1/2 | 10,2 | 24 | 9 | 31,7 | 19 | 10 | 25 | 37,3 |
| B011438 | 14 | 3/8 | 10,2 | 21 | 7,5 | 35 | 21 | 10 | 25 | 35,9 |
| B011412 | 14 | 1/2 | 12,2 | 25 | 9 | 34,3 | 21 | 12 | 25 | 39,3 |



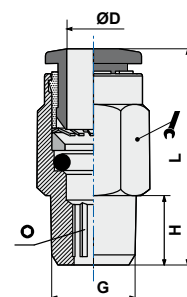
*codes without key flats having the following Ø:
B0104M5 and B0104M6 = Ø9
B0106M5 and B0106M6 = Ø11

ART. **B01C**

Straight male adaptor (tapered)



| COD. | ØD | G | H | L | | | | |
|----------|----|-----|------|------|----|----|----|------|
| B01C0418 | 4 | 1/8 | 7,5 | 19,6 | 10 | 3 | 50 | 6,3 |
| B01C0414 | 4 | 1/4 | 9,5 | 18 | 14 | 3 | 50 | 12,1 |
| B01C0438 | 4 | 3/8 | 10,5 | 19,1 | 17 | 3 | 25 | 21,7 |
| B01C0618 | 6 | 1/8 | 7,5 | 20,3 | 12 | 4 | 50 | 7,1 |
| B01C0614 | 6 | 1/4 | 9,5 | 22,1 | 14 | 4 | 50 | 12,9 |
| B01C0638 | 6 | 3/8 | 10,5 | 20,1 | 17 | 4 | 25 | 21,1 |
| B01C0612 | 6 | 1/2 | 13,5 | 24,1 | 24 | 4 | 25 | 39,3 |
| B01C0818 | 8 | 1/8 | 7,5 | 25,7 | 14 | 5 | 50 | 11,2 |
| B01C0814 | 8 | 1/4 | 9,5 | 24,7 | 14 | 6 | 50 | 12,3 |
| B01C0838 | 8 | 3/8 | 10,5 | 21,7 | 17 | 6 | 50 | 18,3 |
| B01C0812 | 8 | 1/2 | 12,5 | 25,7 | 21 | 6 | 25 | 36,5 |
| B01C1018 | 10 | 1/8 | 7,5 | 29,3 | 17 | 4 | 25 | 18,1 |
| B01C1014 | 10 | 1/4 | 9,5 | 30,8 | 17 | 6 | 50 | 19,7 |
| B01C1038 | 10 | 3/8 | 10,5 | 28,3 | 17 | 8 | 50 | 20,5 |
| B01C1012 | 10 | 1/2 | 13,5 | 26,1 | 21 | 8 | 25 | 34,9 |
| B01C1218 | 12 | 1/8 | 7,5 | 30,8 | 21 | 4 | 25 | 28,4 |
| B01C1214 | 12 | 1/4 | 9,5 | 32,8 | 19 | 6 | 25 | 21,3 |
| B01C1238 | 12 | 3/8 | 10,5 | 29,8 | 21 | 8 | 25 | 29,7 |
| B01C1212 | 12 | 1/2 | 13,5 | 32,3 | 21 | 8 | 25 | 39 |
| B01C1438 | 14 | 3/8 | 10,5 | 34,2 | 21 | 8 | 25 | 34,9 |
| B01C1412 | 14 | 1/2 | 13,5 | 32,7 | 21 | 10 | 25 | 37,5 |

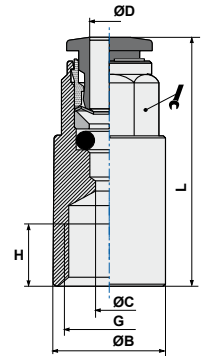


ART. **B02**

Straight female adaptor



| COD. | ØD | G | ØC | ØB | H | L | | | |
|---------|----|-----|----|----|------|------|----|----|------|
| B020418 | 4 | 1/8 | 3 | 12 | 7,5 | 26,5 | 9 | 50 | 10,7 |
| B020414 | 4 | 1/4 | 3 | 17 | 11,5 | 29,5 | 9 | 50 | 19,1 |
| B020618 | 6 | 1/8 | 5 | 12 | 7,5 | 29,1 | 11 | 50 | 11 |
| B020614 | 6 | 1/4 | 5 | 17 | 11,5 | 31,9 | 11 | 50 | 16,8 |
| B020818 | 8 | 1/8 | 7 | 12 | 7,5 | 28 | 13 | 50 | 10,9 |
| B020814 | 8 | 1/4 | 7 | 17 | 11,5 | 33,3 | 13 | 50 | 19,2 |

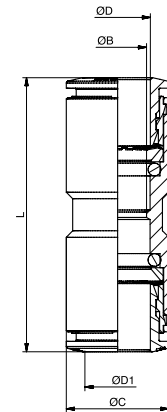


ART. **B03**

Straight connector



| COD. | ØD | ØD1 | ØB | ØC | L | | |
|---------|----|-----|----|----|------|----|------|
| B030400 | 4 | 4 | 3 | 11 | 32,7 | 50 | 5,7 |
| B030600 | 6 | 6 | 5 | 13 | 37,3 | 50 | 9,5 |
| B030800 | 8 | 8 | 7 | 13 | 38,6 | 50 | 12,5 |
| B031000 | 10 | 10 | 9 | 18 | 43,3 | 50 | 17,8 |
| B031200 | 12 | 12 | 11 | 21 | 46,4 | 25 | 32,5 |
| B031400 | 14 | 14 | 13 | 21 | 50 | 25 | 36 |

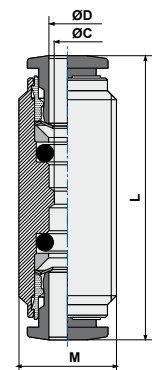


ART. **B03F**

Threaded connector



| COD. | ØD | ØC | M | L | | |
|----------|----|----|------|------|----|------|
| B03F0400 | 4 | 3 | 11x1 | 32 | 50 | 10,7 |
| B03F0600 | 6 | 5 | 14x1 | 36,1 | 50 | 18,7 |
| B03F0800 | 8 | 7 | 16x1 | 38 | 50 | 24,1 |
| B03F1000 | 10 | 9 | 18x1 | 42,3 | 50 | 33,4 |
| B03F1200 | 12 | 11 | 22x1 | 45,8 | 25 | 53,3 |
| B03F1400 | 14 | 13 | 24x1 | 47,5 | 25 | 61,2 |

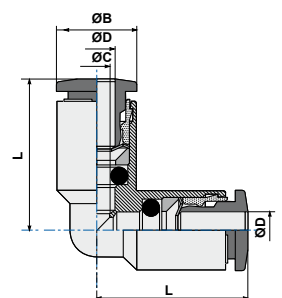


ART. **B04**

Elbow connector



| COD. | ØD | ØC | ØB | L | | |
|---------|----|----|----|-------|----|------|
| B040400 | 4 | 3 | 9 | 18,55 | 50 | 7,6 |
| B040600 | 6 | 5 | 11 | 20,4 | 50 | 8,6 |
| B040800 | 8 | 7 | 13 | 23,3 | 50 | 13,7 |
| B041000 | 10 | 9 | 16 | 27,1 | 50 | 20,1 |
| B041200 | 12 | 11 | 19 | 29,3 | 25 | 47,2 |
| B041400 | 14 | 13 | 21 | 31,7 | 25 | 45 |

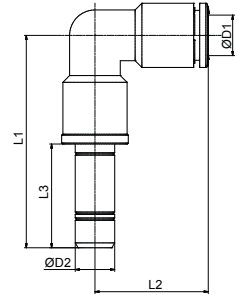


ART. **B04L0**

Plug-in elbow connector



| COD. | ØD1 | ØD2 | L1 | L2 | L3 | | |
|---------|-----|-----|------|-------|------|----|------|
| B0404L0 | 4 | 4 | 34,5 | 18.55 | 16,7 | 50 | 6,6 |
| B0406L0 | 6 | 6 | 39 | 20.4 | 19,5 | 50 | 7,5 |
| B0408L0 | 8 | 8 | 43 | 23.8 | 21 | 50 | 22,4 |
| B0410L0 | 10 | 10 | 51 | 27.1 | 24 | 25 | 27 |
| B0412L0 | 12 | 12 | 54 | 29.3 | 25 | 25 | 64 |

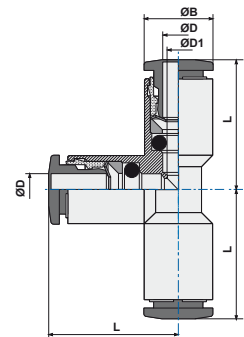


ART. **B05**

T connector



| COD. | ØD | ØC | ØB | L | | |
|---------|----|----|----|-------|----|------|
| B050400 | 4 | 3 | 9 | 18.55 | 50 | 10,8 |
| B050600 | 6 | 5 | 11 | 21.2 | 50 | 12,2 |
| B050800 | 8 | 7 | 13 | 23.3 | 50 | 16,4 |
| B051000 | 10 | 8 | 16 | 26.9 | 25 | 30,6 |
| B051200 | 12 | 10 | 19 | 29.3 | 25 | 56 |
| B051400 | 14 | 12 | 21 | 31.7 | 10 | 58,3 |

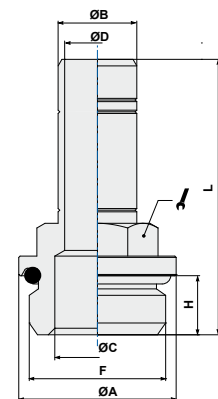


ART. **06**

Adaptor parallel (short)



| COD. | ØB | F | ØA | ØC | ØD | H | L | | | |
|--------|----|-----|----|-----|-----|-----|------|----|----|------|
| 0604M5 | 4 | M5 | 8 | 2 | 2 | 4 | 24,7 | 8 | 50 | 3,6 |
| 0604M6 | 4 | M6 | 9 | 2 | 2 | 5 | 25,7 | 8 | 50 | 3,7 |
| 060418 | 4 | 1/8 | 13 | 5,5 | 2 | 5,5 | 27,7 | 13 | 50 | 9,1 |
| 060414 | 4 | 1/4 | 16 | 7,5 | 2 | 6,5 | 29,2 | 13 | 50 | 11,2 |
| 0606M5 | 6 | M5 | 8 | 2,6 | 2,6 | 4 | 27,5 | 8 | 50 | 4,6 |
| 060618 | 6 | 1/8 | 13 | 5,5 | 4 | 5,5 | 30,5 | 13 | 50 | 9,6 |
| 060614 | 6 | 1/4 | 16 | 7,5 | 4 | 6,5 | 33,5 | 13 | 50 | 12 |
| 060818 | 8 | 1/8 | 13 | 6 | 6 | 5,5 | 32,0 | 13 | 50 | 10,5 |
| 060814 | 8 | 1/4 | 16 | 7,5 | 6 | 6,5 | 33,5 | 13 | 50 | 31,1 |
| 060838 | 8 | 3/8 | 20 | 9 | 6 | 7,5 | 35,5 | 13 | 50 | 18,9 |
| 061018 | 10 | 1/8 | 13 | 6 | 6 | 5,5 | 35,0 | 13 | 50 | 16,7 |
| 061014 | 10 | 1/4 | 16 | 8 | 8 | 6,5 | 38 | 13 | 50 | 14,1 |
| 061038 | 10 | 3/8 | 20 | 8 | 8 | 7,5 | 39,5 | 13 | 50 | 20,8 |
| 061214 | 12 | 1/4 | 16 | 8 | 8 | 6,5 | 37,5 | 13 | 25 | 21,5 |
| 061238 | 12 | 3/8 | 20 | 11 | 10 | 7,5 | 40,5 | 13 | 25 | 21,1 |
| 061212 | 12 | 1/2 | 24 | 13 | 10 | 9 | 42,0 | 16 | 25 | 31,3 |
| 061438 | 14 | 3/8 | 20 | 12 | 12 | 7,5 | 43,0 | 16 | 25 | 22,3 |
| 061412 | 14 | 1/2 | 24 | 13 | 12 | 9 | 44,5 | 16 | 25 | 32,2 |

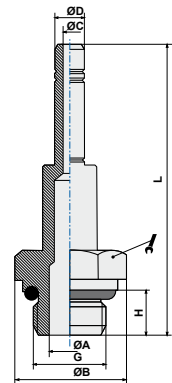


ART. **60**

Adaptor parallel (long)



| COD. | ØD | G | ØC | ØB | H | L | ØA | | | |
|--------|----|-----|----|----|-----|------|-----|----|----|------|
| 600418 | 4 | 1/8 | 2 | 13 | 5,5 | 39,2 | 6 | 13 | 50 | 10,2 |
| 600618 | 6 | 1/8 | 4 | 13 | 5,5 | 44,5 | 5,5 | 13 | 50 | 13,5 |
| 600614 | 6 | 1/4 | 4 | 16 | 6,5 | 48 | 7,5 | 13 | 50 | 18,1 |
| 600818 | 8 | 1/8 | 6 | 13 | 5,5 | 48 | 6 | 13 | 50 | 19,1 |
| 600814 | 8 | 1/4 | 6 | 16 | 6,5 | 49,5 | 7,5 | 13 | 50 | 19,8 |
| 600838 | 8 | 3/8 | 6 | 20 | 7,5 | 51,5 | 9 | 13 | 50 | 27 |
| 601038 | 10 | 3/8 | 8 | 20 | 7,5 | 56 | 9 | 13 | 25 | 33,2 |

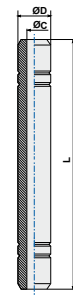


ART. **07**

Connector



| COD. | ØD | ØC | L | | |
|--------|----|----|------|-----|------|
| 070400 | 4 | 2 | 33,4 | 100 | 2,6 |
| 070600 | 6 | 4 | 39 | 50 | 5 |
| 070800 | 8 | 6 | 42 | 50 | 7,5 |
| 071000 | 10 | 8 | 48 | 50 | 10,8 |
| 071200 | 12 | 10 | 48 | 50 | 14,3 |

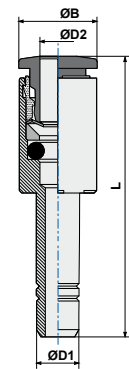


ART. **B08**

Plug-in reducer



| COD. | ØD1 | ØD2 | ØB | L | | |
|---------|-----|-----|----|-------|----|------|
| B080604 | 6 | 4 | 9 | 32,85 | 50 | 5,5 |
| B080804 | 8 | 4 | 9 | 34 | 50 | 9,7 |
| B080806 | 8 | 6 | 11 | 36,9 | 50 | 8,6 |
| B081006 | 10 | 6 | 11 | 39,9 | 50 | 15,5 |
| B081008 | 10 | 8 | 13 | 39,3 | 50 | 11,8 |
| B081208 | 12 | 8 | 13 | 39,8 | 25 | 18,8 |
| B081210 | 12 | 10 | 16 | 41,9 | 25 | 16,6 |
| B081406 | 14 | 6 | 15 | 36,9 | 25 | 36 |

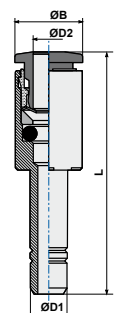


ART. **B08/E**

Plug-in increaser

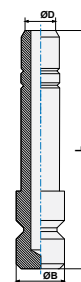


| COD. | ØD1 | ØD2 | ØB | L | | |
|----------|-----|-----|----|------|----|------|
| B08E0406 | 4 | 6 | 11 | 40,4 | 50 | 7,5 |
| B08E0608 | 6 | 8 | 13 | 44 | 50 | 11,3 |

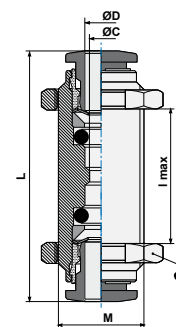


ART. 09
Plug

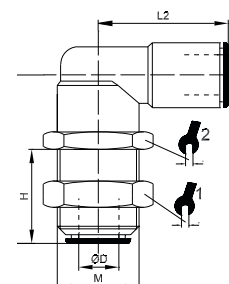

| COD. | ØD | ØB | L | | |
|--------|----|----|------|----|------|
| 090400 | 4 | 5 | 26 | 50 | 3,1 |
| 090600 | 6 | 7 | 29 | 50 | 4,7 |
| 090800 | 8 | 9 | 31,5 | 50 | 7,7 |
| 091000 | 10 | 11 | 35 | 50 | 10,8 |
| 091200 | 12 | 13 | 37 | 25 | 14,5 |


ART. B10
Bulkhead connector

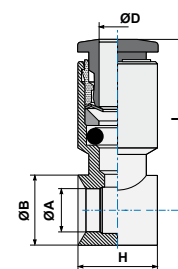

| COD. | ØD | ØC | M | lmax | L | | | |
|---------|----|----|------|------|------|----|----|------|
| B100400 | 4 | 3 | 11x1 | 14 | 32,7 | 14 | 50 | 15,8 |
| B100600 | 6 | 5 | 14x1 | 14,5 | 37,3 | 17 | 50 | 25,9 |
| B100800 | 8 | 7 | 16x1 | 15 | 38,6 | 18 | 50 | 30 |
| B101000 | 10 | 9 | 18x1 | 16,5 | 43,3 | 21 | 25 | 44,4 |
| B101200 | 12 | 11 | 22x1 | 18,6 | 46,4 | 26 | 25 | 70,6 |
| B101400 | 14 | 13 | 24x1 | 21,7 | 50 | 27 | 25 | 79,9 |


ART. B10L
Elbow bulkhead


| COD. | ØD | M | H | L1 | L2 | | | | |
|----------|----|-------|------|------|----|----|----|----|------|
| B10L0400 | 4 | M11x1 | 12,5 | 25,5 | 20 | 13 | 13 | 50 | 22,4 |
| B10L0600 | 6 | M14x1 | 15 | 28 | 21 | 17 | 17 | 50 | 31,1 |
| B10L0800 | 8 | M16x1 | 17 | 30,5 | 24 | 18 | 18 | 50 | 35 |
| B10L1000 | 10 | M18x1 | 19 | 35 | 27 | 21 | 21 | 25 | 52,7 |


ART. B13
Single banjo body


| COD. | ØD | G* | ØA | ØB | H | L | | |
|----------|----|-----|-------|----|----|-------|----|------|
| B1304M5 | 4 | M5 | 5 | 9 | 9 | 19,85 | 50 | 5,9 |
| B130418 | 4 | 1/8 | 9,9 | 14 | 15 | 21,65 | 50 | 13,4 |
| B130618 | 6 | 1/8 | 9,9 | 14 | 15 | 24,9 | 50 | 14,2 |
| B130614 | 6 | 1/4 | 13,3 | 18 | 17 | 26,1 | 50 | 20,4 |
| B130818 | 8 | 1/8 | 9,9 | 14 | 15 | 25,15 | 50 | 14,6 |
| B130814 | 8 | 1/4 | 13,3 | 18 | 17 | 26,8 | 50 | 20,8 |
| B130838 | 8 | 3/8 | 16,75 | 21 | 20 | 28,3 | 50 | 27,6 |
| B131014 | 10 | 1/4 | 13,3 | 18 | 17 | 28,9 | 50 | 25,7 |
| B131038 | 10 | 3/8 | 16,75 | 21 | 20 | 30,35 | 25 | 30 |
| B131214 | 12 | 1/4 | 13,3 | 18 | 17 | 30,7 | 25 | 28,1 |
| B131238 | 12 | 3/8 | 16,75 | 21 | 20 | 31,6 | 25 | 32,6 |
| B131212 | 12 | 1/2 | 21 | 26 | 24 | 35,15 | 25 | 47,3 |
| B13R04M5 | 4 | M5 | 6 | 9 | 10 | 19,85 | 50 | 5,4 |
| B13R06M5 | 6 | M5 | 6 | 9 | 10 | 22,1 | 50 | 7,9 |



G* = Stem thread. See page 94 of stem section.

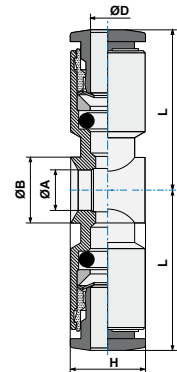
ART. **B14**

Double banjo body



| COD. | ØD | G* | ØA | ØB | H | L | | |
|---------|----|-----|-------|----|----|------|----|------|
| B140618 | 6 | 1/8 | 9,9 | 14 | 15 | 24,3 | 50 | 17,2 |
| B140818 | 8 | 1/8 | 9,9 | 14 | 15 | 24,8 | 50 | 18 |
| B140814 | 8 | 1/4 | 13,3 | 18 | 17 | 26,5 | 50 | 27,6 |
| B140838 | 8 | 3/8 | 16,75 | 21 | 20 | 28 | 50 | 32,2 |
| B141014 | 10 | 1/4 | 13,3 | 18 | 17 | 28,4 | 50 | 31,4 |
| B141038 | 10 | 3/8 | 16,75 | 21 | 20 | 29,9 | 25 | 36,9 |

G* = Stem thread. See page 95 of stem section.

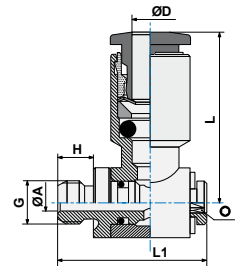


ART. **B15**

Complete single banjo (rotating under pressure)



| COD. | ØD | G | ØA | H | L1 | L | | | |
|---------|----|-----|-----|-----|------|-------|-----|----|------|
| B1504M5 | 4 | M5 | 2 | 4 | 16,8 | 19,85 | 2,5 | 50 | 8,4 |
| B1504M6 | 4 | M6 | 2 | 5 | 17,8 | 19,85 | 2,5 | 50 | 8,5 |
| B150418 | 4 | 1/8 | 5,5 | 5,5 | 24,5 | 21,65 | 3 | 50 | 22,9 |
| B1506M5 | 6 | M5 | 2 | 4 | 16,8 | 22,4 | 2,5 | 50 | 9,3 |
| B150618 | 6 | 1/8 | 5,5 | 5,5 | 24,5 | 24,9 | 3 | 50 | 23,3 |
| B150614 | 6 | 1/4 | 7,8 | 6,5 | 27,8 | 26,1 | 4 | 50 | 38,8 |
| B150818 | 8 | 1/8 | 5,5 | 5,5 | 24,5 | 25,15 | 3 | 50 | 24,2 |
| B150814 | 8 | 1/4 | 7,8 | 6,5 | 27,8 | 26,8 | 4 | 50 | 39,4 |
| B150838 | 8 | 3/8 | 10 | 7,5 | 32,5 | 28,3 | 5 | 25 | 60 |
| B151014 | 10 | 1/4 | 7,8 | 6,5 | 27,8 | 28,9 | 4 | 25 | 44,6 |
| B151038 | 10 | 3/8 | 10 | 7,5 | 32,5 | 30,35 | 5 | 25 | 63,5 |
| B151214 | 12 | 1/4 | 7,8 | 6,5 | 27,8 | 30,85 | 4 | 25 | 46,9 |
| B151238 | 12 | 3/8 | 10 | 7,5 | 32,5 | 31,6 | 5 | 25 | 65,2 |
| B151212 | 12 | 1/2 | 12 | 9 | 38,8 | 35,15 | 8 | 10 | 110 |

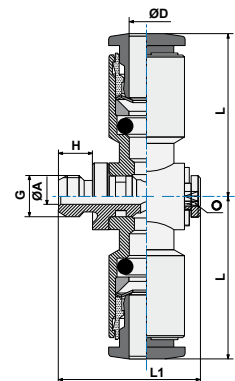


ART. **B16**

Complete single banjo (rotating under pressure)



| COD. | ØD | G | ØA | H | L1 | L | | | |
|---------|----|-----|-----|-----|------|------|---|----|------|
| B160618 | 6 | 1/8 | 5,5 | 5,5 | 24,5 | 24,3 | 3 | 50 | 27,4 |
| B160818 | 8 | 1/8 | 5,5 | 5,5 | 25 | 24,8 | 3 | 50 | 27,4 |
| B160814 | 8 | 1/4 | 7,8 | 6,5 | 28 | 26,5 | 4 | 25 | 32,1 |
| B160838 | 8 | 3/8 | 10 | 7,5 | 32,5 | 28 | 5 | 25 | 39,8 |
| B161014 | 10 | 1/4 | 7,8 | 6,5 | 28 | 28,4 | 4 | 25 | 49,9 |
| B161038 | 10 | 3/8 | 10 | 7,5 | 32,5 | 29,9 | 5 | 25 | 55,1 |

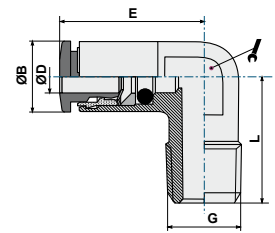


ART. **B19**

Elbow male adaptor



| COD. | ØD | G | ØB | E | L | | | |
|---------|----|-----|----|-------|------|----|-----|------|
| B190418 | 4 | 1/8 | 9 | 19,35 | 16,5 | 10 | 100 | 11,6 |
| B190618 | 6 | 1/8 | 11 | 24,4 | 16,5 | 10 | 100 | 13,3 |
| B190614 | 6 | 1/4 | 11 | 25,4 | 22 | 11 | 100 | 19,3 |
| B190818 | 8 | 1/8 | 13 | 25,3 | 18,5 | 11 | 100 | 16,5 |
| B190814 | 8 | 1/4 | 13 | 25,3 | 22,0 | 11 | 100 | 19,1 |
| B191014 | 10 | 1/4 | 16 | 26,9 | 23,5 | 13 | 50 | 25,4 |

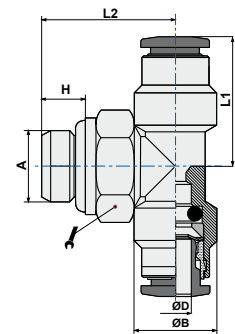


ART. **B20**

Swivel male stud T parallel



| COD. | ØD | A | H | ØB | L1 | L2 | | | |
|---------|----|-----|-----|-------|------|------|----|----|------|
| B2004M5 | 4 | M5 | 4 | 9 | 17,3 | 20,0 | 8 | 50 | 16,6 |
| B200418 | 4 | 1/8 | 5,5 | 11,40 | 17,3 | 18,5 | 13 | 50 | 21,5 |
| B200414 | 4 | 1/4 | 6,5 | 9 | 19,0 | 22,5 | 16 | 50 | 28,7 |
| B2006M5 | 6 | M5 | 4 | 11,20 | 20,5 | 21 | 8 | 50 | 16 |
| B200618 | 6 | 1/8 | 5,5 | 11 | 19,5 | 18,5 | 13 | 50 | 20,1 |
| B200614 | 6 | 1/4 | 6,5 | 11 | 22,1 | 22,5 | 16 | 50 | 27,4 |
| B200818 | 8 | 1/8 | 5,5 | 13 | 23,0 | 20,5 | 13 | 50 | 25,8 |
| B200814 | 8 | 1/4 | 6,5 | 13 | 23,0 | 22,5 | 16 | 50 | 29,8 |
| B200838 | 8 | 3/8 | 7,5 | 13 | 24,5 | 25,5 | 18 | 25 | 36 |
| B201014 | 10 | 1/4 | 6,5 | 16 | 26,4 | 24,5 | 16 | 25 | 50,3 |
| B201038 | 10 | 3/8 | 7,5 | 16 | 26,4 | 25,5 | 18 | 25 | 50,3 |

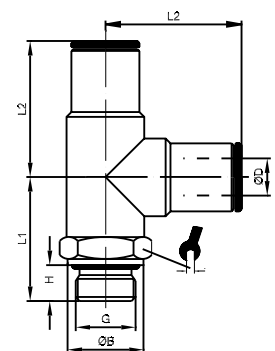


ART. **B21**

Swivel male branch T (parallel)



| COD. | ØD | G | H | ØB | L1 | L2 | | | |
|---------|----|------|-----|----|------|------|----|----|------|
| B2104M5 | 4 | M5 | 4 | 8 | 16,5 | 19 | 9 | 50 | 14,7 |
| B210418 | 4 | G1/8 | 5,5 | 13 | 18,5 | 17,5 | 13 | 50 | 26,8 |
| B210414 | 4 | G1/4 | 6,5 | 16 | 22,5 | 19 | 13 | 50 | 29,7 |
| B210618 | 6 | G1/8 | 5,5 | 13 | 20 | 21 | 13 | 50 | 29 |
| B210614 | 6 | G1/4 | 6,5 | 16 | 24 | 21 | 13 | 50 | 31,8 |
| B210818 | 8 | G1/8 | 5,5 | 13 | 20 | 23 | 13 | 50 | 29,6 |
| B210814 | 8 | G1/4 | 6,5 | 16 | 24 | 23 | 13 | 50 | 32,6 |
| B210838 | 8 | G3/8 | 4,5 | 20 | 25,5 | 23 | 17 | 25 | 37,2 |
| B211014 | 10 | G1/4 | 6,5 | 16 | 24 | 27 | 16 | 25 | 51,5 |

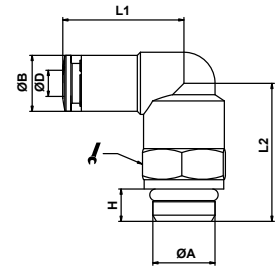


ART. **B22**

Swivel elbow male adaptor (parallel)



| COD. | ØD | A | H | ØB | L1 | L2 | | | |
|----------|----|---------|-----|-----|-------|------|----|-----|------|
| B2204M5 | 4 | M5 | 4 | 9,1 | 18,55 | 14,8 | 9 | 100 | 8,9 |
| B2204M12 | 4 | M12x1,5 | 6,5 | 9,1 | 20,35 | 22,4 | 13 | 100 | 10 |
| B220418 | 4 | 1/8 | 5,5 | 9,1 | 20,35 | 19,9 | 13 | 100 | 18,1 |
| B220414 | 4 | 1/4 | 6,5 | 9,1 | 20,35 | 22,7 | 13 | 100 | 21,6 |
| B220438 | 4 | 3/8 | 7,5 | 9,1 | 20,35 | 24,9 | 13 | 100 | 21,9 |
| B2206M5 | 6 | M5 | 4 | 11 | 22,4 | 15 | 9 | 100 | 10,6 |
| B2206M12 | 6 | M12x1,5 | 6,5 | 11 | 23,9 | 22,2 | 13 | 100 | 12,7 |
| B220618 | 6 | 1/8 | 5,5 | 11 | 23,9 | 19,7 | 13 | 100 | 19,5 |
| B220614 | 6 | 1/4 | 6,5 | 11 | 23,9 | 22,7 | 13 | 100 | 22,6 |
| B220638 | 6 | 3/8 | 7,5 | 11 | 23,9 | 24,7 | 13 | 100 | 28,3 |
| B2208M12 | 8 | M12x1,5 | 6,5 | 13 | 24,3 | 22,2 | 13 | 100 | 21,3 |
| B220818 | 8 | 1/8 | 5,5 | 13 | 23,95 | 19,7 | 13 | 100 | 18,8 |
| B220814 | 8 | 1/4 | 6,5 | 13 | 24,3 | 22,7 | 13 | 50 | 21,9 |
| B220838 | 8 | 3/8 | 7,5 | 13 | 24,3 | 24,7 | 13 | 50 | 28,4 |
| B221014 | 10 | 1/4 | 6,5 | 16 | 28,4 | 22,6 | 16 | 50 | 32,8 |
| B221038 | 10 | 3/8 | 7,5 | 16 | 28,4 | 26,6 | 16 | 50 | 38,8 |
| B221012 | 10 | 1/2 | 9 | 16 | 28,4 | 28,1 | 16 | 50 | 43,5 |
| B221214 | 12 | 1/4 | 6,5 | 19 | 31,4 | 29,2 | 16 | 25 | 60,3 |
| B221238 | 12 | 3/8 | 7,5 | 19 | 31,4 | 27,2 | 20 | 25 | 58,7 |
| B221212 | 12 | 1/2 | 9 | 19 | 31,4 | 31,7 | 20 | 25 | 68,8 |
| B221438 | 14 | 3/8 | 7,5 | 21 | 32,0 | 28,5 | 20 | 25 | 57,5 |
| B221412 | 14 | 1/2 | 9 | 21 | 32,0 | 33,5 | 20 | 25 | 71 |

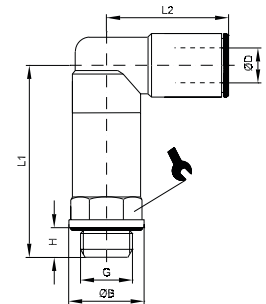


ART. **B22L**

Swivel longer elbow male adaptor (parallel)



| COD. | ØD | G | ØB | H | L1 | L2 | | | |
|----------|----|------|----|-----|------|-------|----|----|------|
| B22L0418 | 4 | G1/8 | 13 | 5,5 | 33,2 | 20,35 | 13 | 25 | 29,1 |
| B22L0414 | 4 | G1/4 | 16 | 6,5 | 38,2 | 20,35 | 13 | 25 | 32,5 |
| B22L0618 | 6 | G1/8 | 13 | 5,5 | 33 | 23,9 | 13 | 25 | 30,5 |
| B22L0614 | 6 | G1/4 | 16 | 6,5 | 38 | 23,9 | 13 | 25 | 34,2 |
| B22L0818 | 8 | G1/8 | 13 | 5,5 | 33 | 24 | 13 | 25 | 30,2 |
| B22L0814 | 8 | G1/4 | 16 | 6,5 | 38 | 24,3 | 13 | 25 | 33,7 |
| B22L1014 | 10 | G1/4 | 16 | 6,5 | 40,5 | 28,4 | 16 | 25 | 52,5 |

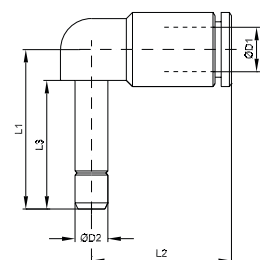


ART. **B22L0**

Plug-in elbow connector

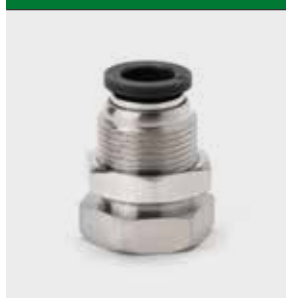


| COD. | ØD1 | ØD2 | L1 | L2 | L3 | | |
|---------|-----|-----|------|-------|------|----|------|
| B2204L0 | 4 | 4 | 25,2 | 20,35 | 16,2 | 50 | 8,9 |
| B2206L0 | 6 | 6 | 28,5 | 23,9 | 19,5 | 50 | 19,1 |
| B2208L0 | 8 | 8 | 30 | 24,3 | 21 | 50 | 21,6 |
| B2210L0 | 10 | 10 | 35 | 28,4 | 24 | 25 | 26,5 |
| B2212L0 | 12 | 12 | 38,5 | 31,4 | 25 | 25 | 31,7 |

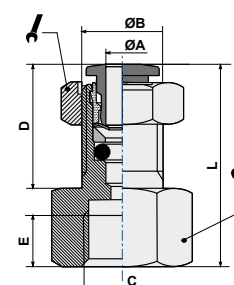


ART. **B25**

Female bulkhead



| COD. | ØA | C | ØB | D | E | L | | | |
|---------|----|-----|-------|------|------|------|----|----|------|
| B250418 | 4 | 1/8 | M12x1 | 13,5 | 8,5 | 23,5 | 14 | 25 | 15,8 |
| B250618 | 6 | 1/8 | M14x1 | 16,8 | 8,5 | 29,3 | 17 | 25 | 23,7 |
| B250614 | 6 | 1/4 | M14x1 | 16,8 | 11,0 | 24,6 | 17 | 25 | 26,8 |
| B250818 | 8 | 1/8 | M16x1 | 20,7 | 8,5 | 32,2 | 19 | 25 | 29,7 |
| B250814 | 8 | 1/4 | M16x1 | 20,7 | 11,0 | 26,8 | 19 | 25 | 36,5 |

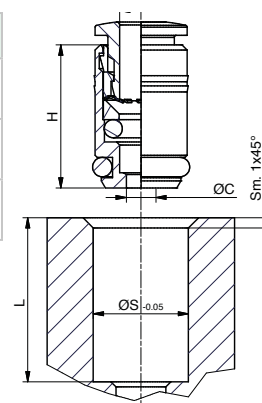


ART. **B27**

Cartridge

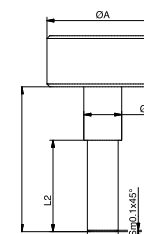


| COD. | ØD | ØC | H | ØS | L | | |
|---------|----|-----|----|------|------|-----|-----|
| B270400 | 4 | 2,9 | 14 | 9,1 | 13,5 | 100 | 1,3 |
| B270600 | 6 | 4,5 | 16 | 11,1 | 15,5 | 50 | 4,8 |
| B270800 | 8 | 6,5 | 17 | 13,6 | 16,5 | 50 | 3,2 |



Assembly instructions

| Ø Cartridge | ØA | ØB | ØC | L1 | L2 |
|-------------|----|----|----------|------|------|
| Ø 4 | 20 | 4 | 3.5 -0.1 | 20 | 12,5 |
| Ø 6 | 20 | 6 | 5.1 -0.1 | 20 | 12,5 |
| Ø 8 | 20 | 8 | 7.1 -0.1 | 20.5 | 12,5 |



| COD. | ØD | ØC | ØB | H |
|---------|----|-----|------|----|
| B270400 | 4 | 2.9 | 7.8 | 14 |
| B270600 | 6 | 5 | 10 | 16 |
| B270800 | 8 | 7 | 11.8 | 17 |

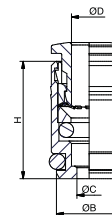
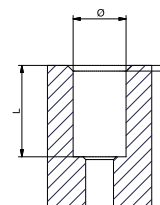


Table for housing
on plastic material

Table for housing
on aluminium

| Ø | L | Ø Cartuccia | Ø Cartuccia | Ø | L |
|-------------|-----------|-------------|-------------|------------|-----------|
| 9 -0.05 | 13.5 -0.1 | Ø 4 | Ø 4 | 9.1 -0.05 | 13.5 -0.1 |
| 10.97 -0.05 | 15.5 -0.1 | Ø 6 | Ø 6 | 11.1 -0.05 | 15.5 -0.1 |
| 12.95 -0.05 | 16.5 -0.1 | Ø 8 | Ø 8 | 13.6 -0.05 | 16.5 -0.1 |

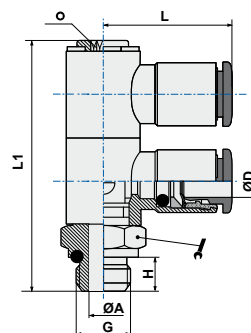


ART. **B33**

Swivel double banjo stem



| COD. | ØD | G | ØA | H | L1 | L | | | | |
|---------|----|-----|-----|-----|------|-------|----|---|----|-------|
| B330418 | 4 | 1/8 | 5,5 | 5,5 | 43,3 | 21,65 | 14 | 3 | 25 | 44,41 |
| B330618 | 6 | 1/8 | 5,5 | 5,5 | 43,3 | 24,9 | 14 | 3 | 25 | 45,5 |
| B330614 | 6 | 1/4 | 7,8 | 6,5 | 50 | 26,1 | 18 | 4 | 25 | 75,6 |
| B330818 | 8 | 1/8 | 5,5 | 5,5 | 43,3 | 25,1 | 14 | 3 | 25 | 48,5 |
| B330814 | 8 | 1/4 | 7,8 | 6,5 | 50 | 26,8 | 18 | 4 | 25 | 76,4 |
| B331014 | 10 | 1/4 | 7,8 | 6,5 | 50 | 28,9 | 18 | 4 | 25 | 87 |

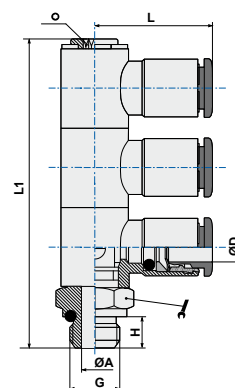


ART. **B34**

Swivel triple banjo stem

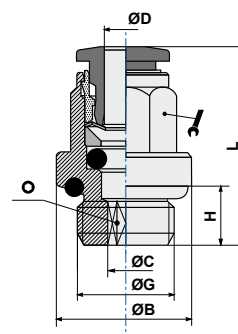


| COD. | ØD | G | ØA | H | L1 | L | | | | |
|---------|----|-----|-----|-----|------|-------|----|---|----|-------|
| B340418 | 4 | 1/8 | 5,5 | 5,5 | 58,4 | 21,65 | 14 | 3 | 10 | 54,1 |
| B340618 | 6 | 1/8 | 5,5 | 5,5 | 58,4 | 24,9 | 14 | 3 | 10 | 63,9 |
| B340614 | 6 | 1/4 | 7,8 | 6,5 | 67,1 | 26,1 | 18 | 4 | 10 | 65,6 |
| B340818 | 8 | 1/8 | 5,5 | 5,5 | 58,4 | 25,1 | 14 | 3 | 10 | 66,2 |
| B340814 | 8 | 1/4 | 7,8 | 6,5 | 67,1 | 26,8 | 18 | 4 | 10 | 108 |
| B341014 | 10 | 1/4 | 7,8 | 6,5 | 67,1 | 28,9 | 18 | 4 | 10 | 151,1 |



ART. 010T
Straight male adaptor parallel


| COD. | ØD | G | ØC | ØB | H | L | | | | |
|----------|----|-----|------|------|-----|-------|----|-----|-----|-------|
| 010T04M5 | 4 | M5 | 2,5 | 8 | 4 | 20,85 | * | 2,5 | 100 | 4,93 |
| 010T04M6 | 4 | M6 | 2,5 | 9 | 5 | 21,85 | * | 2,5 | 50 | 5,53 |
| 010T0418 | 4 | 1/8 | 2,5 | 13,5 | 5,5 | 20 | 9 | 2,5 | 50 | 8,60 |
| 010T0414 | 4 | 1/4 | 2,5 | 17 | 6,5 | 20 | 9 | 2,5 | 50 | 12,21 |
| 010T06M5 | 6 | M5 | 2,5 | 8 | 4 | 24,4 | * | 2,5 | 50 | 7,20 |
| 010T06M6 | 6 | M6 | 2,5 | 11 | 5 | 25,4 | * | 2,5 | 50 | 8,20 |
| 010T0618 | 6 | 1/8 | 4,1 | 13,5 | 5,5 | 25,4 | 11 | 4 | 50 | 11,65 |
| 010T0614 | 6 | 1/4 | 4,1 | 17 | 6,5 | 23,4 | 11 | 4 | 50 | 15,10 |
| 010T0818 | 8 | 1/8 | 5,1 | 13 | 5,5 | 26,8 | 13 | 5 | 50 | 13,10 |
| 010T0814 | 8 | 1/4 | 6,1 | 17 | 6,5 | 24 | 13 | 6 | 50 | 14,34 |
| 010T0838 | 8 | 3/8 | 6,1 | 20 | 7,5 | 24 | 13 | 6 | 50 | 20,72 |
| 010T0812 | 8 | 1/2 | 6,1 | 24 | 9 | 25 | 13 | 6 | 25 | 40,80 |
| 010T1014 | 10 | 1/4 | 7,2 | 16 | 6,5 | 29,4 | 16 | 7 | 50 | 22,15 |
| 010T1038 | 10 | 3/8 | 8,2 | 21 | 7,5 | 29,4 | 16 | 8 | 50 | 28,98 |
| 010T1012 | 10 | 1/2 | 8,2 | 24 | 9 | 29,4 | 16 | 8 | 25 | 38,77 |
| 010T1214 | 12 | 1/4 | 7,2 | 16 | 6,5 | 32,2 | 19 | 7 | 25 | 30,50 |
| 010T1238 | 12 | 3/8 | 10,2 | 22 | 7,5 | 32,2 | 19 | 10 | 25 | 35,68 |
| 010T1212 | 12 | 1/2 | 10,2 | 24 | 9 | 31,7 | 19 | 10 | 25 | 42,72 |
| 010T1438 | 14 | 3/8 | 10,2 | 21 | 7,5 | 35 | 21 | 10 | 25 | 40,89 |
| 010T1412 | 14 | 1/2 | 12,2 | 25 | 9 | 34,3 | 21 | 12 | 25 | 44,28 |



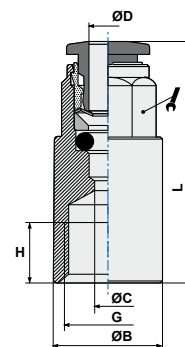
* codes without key flats having the following Ø:

010T04M5 and 010T04M6 = Ø9

010T06M5 and 010T06M6 = Ø11

ART. 020T
Straight female adaptor


| COD. | ØD | G | ØC | ØB | H | L | | | |
|----------|----|-----|----|----|------|------|----|----|-------|
| 020T0418 | 4 | 1/8 | 3 | 12 | 7,5 | 26,5 | 9 | 50 | 11,92 |
| 020T0414 | 4 | 1/4 | 3 | 17 | 11,5 | 29,5 | 9 | 50 | 20,20 |
| 020T0618 | 6 | 1/8 | 5 | 12 | 7,5 | 29,1 | 11 | 50 | 12,50 |
| 020T0614 | 6 | 1/4 | 5 | 17 | 11,5 | 31,9 | 11 | 50 | 18,29 |
| 020T0818 | 8 | 1/8 | 7 | 12 | 7,5 | 28 | 13 | 50 | 12,09 |
| 020T0814 | 8 | 1/4 | 7 | 17 | 11,5 | 33,3 | 13 | 50 | 20,94 |

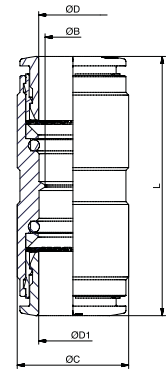


ART. **03OT**

Straight connector



| COD. | ØD | ØD1 | ØB | ØC | L | | |
|----------|----|-----|----|----|------|----|-------|
| 03OT0400 | 4 | 4 | 3 | 11 | 32,7 | 50 | 8,07 |
| 03OT0600 | 6 | 6 | 5 | 13 | 37,3 | 50 | 12,46 |
| 03OT0800 | 8 | 8 | 7 | 13 | 38,6 | 50 | 16,02 |
| 03OT1000 | 10 | 10 | 9 | 18 | 43,3 | 50 | 25,80 |
| 03OT1200 | 12 | 12 | 11 | 21 | 46,4 | 25 | 41,50 |
| 03OT1400 | 14 | 14 | 13 | 21 | 50 | 25 | 46 |

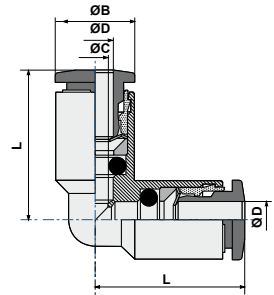


ART. **04OT**

Elbow connector



| COD. | ØD | ØC | ØB | L | | |
|----------|----|----|----|-------|----|-------|
| 04OT0400 | 4 | 3 | 9 | 18,55 | 50 | 10,00 |
| 04OT0600 | 6 | 5 | 11 | 20,4 | 50 | 11,63 |
| 04OT0800 | 8 | 7 | 13 | 23,3 | 50 | 17,28 |
| 04OT1000 | 10 | 9 | 16 | 27,1 | 50 | 28,08 |
| 04OT1200 | 12 | 11 | 19 | 29,3 | 25 | 56,13 |
| 04OT1400 | 14 | 13 | 21 | 31,7 | 25 | 55,01 |

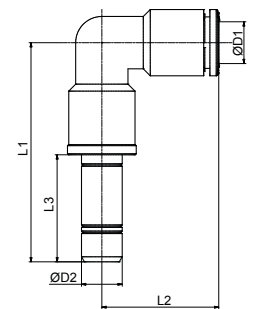


ART. **04OTL0**

Plug-in elbow connector



| COD. | ØD1 | ØD2 | L1 | L2 | L3 | | |
|----------|-----|-----|------|-------|------|----|-------|
| 04OT04L0 | 4 | 4 | 34,5 | 18,55 | 16,7 | 50 | 7,82 |
| 04OT06L0 | 6 | 6 | 39 | 20,4 | 19,5 | 50 | 9,00 |
| 04OT08L0 | 8 | 8 | 43 | 23,8 | 21 | 50 | 24,23 |
| 04OT10L0 | 10 | 10 | 51 | 27,1 | 24 | 25 | 26,00 |
| 04OT12L0 | 12 | 12 | 54 | 29,3 | 25 | 25 | 69,02 |

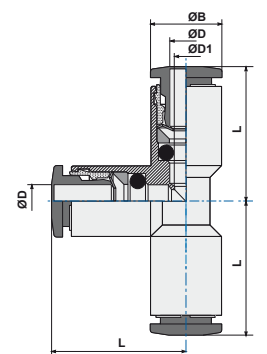


ART. **05OT**

T connector



| COD. | ØD | ØC | ØB | L | | |
|----------|----|----|----|-------|----|-------|
| 05OT0400 | 4 | 3 | 9 | 18,55 | 50 | 14,36 |
| 05OT0600 | 6 | 5 | 11 | 21,2 | 50 | 16,73 |
| 05OT0800 | 8 | 7 | 13 | 23,3 | 50 | 21,76 |
| 05OT1000 | 10 | 8 | 16 | 26,9 | 25 | 42,57 |
| 05OT1200 | 12 | 10 | 19 | 29,3 | 25 | 69,50 |
| 05OT1400 | 14 | 12 | 21 | 31,7 | 10 | 73,01 |

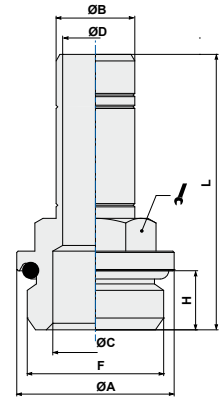


ART. **06**

Adaptor parallel (short)



| COD. | ØB | F | ØA | ØC | ØD | H | L | | | |
|--------|----|-----|----|-----|-----|-----|------|----|----|------|
| 0604M5 | 4 | M5 | 8 | 2 | 2 | 4 | 24,7 | 8 | 50 | 3,6 |
| 0604M6 | 4 | M6 | 9 | 2 | 2 | 5 | 25,7 | 8 | 50 | 3,7 |
| 060418 | 4 | 1/8 | 13 | 5,5 | 2 | 5,5 | 27,7 | 13 | 50 | 9,1 |
| 060414 | 4 | 1/4 | 16 | 7,5 | 2 | 6,5 | 29,2 | 13 | 50 | 11,2 |
| 0606M5 | 6 | M5 | 8 | 2,6 | 2,6 | 4 | 27,5 | 8 | 50 | 4,6 |
| 060618 | 6 | 1/8 | 13 | 5,5 | 4 | 5,5 | 30,5 | 13 | 50 | 9,6 |
| 060614 | 6 | 1/4 | 16 | 7,5 | 4 | 6,5 | 33,5 | 13 | 50 | 12 |
| 060818 | 8 | 1/8 | 13 | 6 | 6 | 5,5 | 32,0 | 13 | 50 | 10,5 |
| 060814 | 8 | 1/4 | 16 | 7,5 | 6 | 6,5 | 33,5 | 13 | 50 | 31,1 |
| 060838 | 8 | 3/8 | 20 | 9 | 6 | 7,5 | 35,5 | 13 | 50 | 18,9 |
| 061018 | 10 | 1/8 | 13 | 6 | 6 | 5,5 | 35,0 | 13 | 50 | 16,7 |
| 061014 | 10 | 1/4 | 16 | 8 | 8 | 6,5 | 38 | 13 | 50 | 14,1 |
| 061038 | 10 | 3/8 | 20 | 8 | 8 | 7,5 | 39,5 | 13 | 50 | 20,8 |
| 061214 | 12 | 1/4 | 16 | 8 | 8 | 6,5 | 37,5 | 13 | 25 | 21,5 |
| 061238 | 12 | 3/8 | 20 | 11 | 10 | 7,5 | 40,5 | 13 | 25 | 21,1 |
| 061212 | 12 | 1/2 | 24 | 13 | 10 | 9 | 42,0 | 16 | 25 | 31,3 |
| 061438 | 14 | 3/8 | 20 | 12 | 12 | 7,5 | 43,0 | 16 | 25 | 22,3 |
| 061412 | 14 | 1/2 | 24 | 13 | 12 | 9 | 44,5 | 16 | 25 | 32,2 |

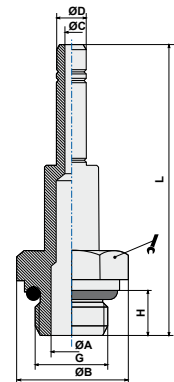


ART. **60**

Adaptor parallel (long)



| COD. | ØD | G | ØC | ØB | H | L | ØA | | | |
|--------|----|-----|----|----|-----|------|-----|----|----|------|
| 600418 | 4 | 1/8 | 2 | 13 | 5,5 | 39,2 | 6 | 13 | 50 | 10,2 |
| 600618 | 6 | 1/8 | 4 | 13 | 5,5 | 44,5 | 5,5 | 13 | 50 | 13,5 |
| 600614 | 6 | 1/4 | 4 | 16 | 6,5 | 48 | 7,5 | 13 | 50 | 18,1 |
| 600818 | 8 | 1/8 | 6 | 13 | 5,5 | 48 | 6 | 13 | 50 | 19,1 |
| 600814 | 8 | 1/4 | 6 | 16 | 6,5 | 49,5 | 7,5 | 13 | 50 | 19,8 |
| 600838 | 8 | 3/8 | 6 | 20 | 7,5 | 51,5 | 9 | 13 | 50 | 27 |
| 601038 | 10 | 3/8 | 8 | 20 | 7,5 | 56 | 9 | 13 | 25 | 33,2 |

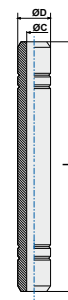


ART. **07**

Connector



| COD. | ØD | ØC | L | | |
|--------|----|----|------|-----|------|
| 070400 | 4 | 2 | 33,4 | 100 | 2,6 |
| 070600 | 6 | 4 | 39 | 50 | 5 |
| 070800 | 8 | 6 | 42 | 50 | 7,5 |
| 071000 | 10 | 8 | 48 | 50 | 10,8 |
| 071200 | 12 | 10 | 48 | 50 | 14,3 |

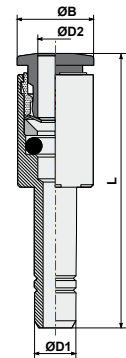


ART. **080T**

Plug-in reducer



| COD. | ØD1 | ØD2 | ØB | L | | |
|----------|-----|-----|----|-------|----|-------|
| 080T0604 | 6 | 4 | 9 | 32,85 | 50 | 6,67 |
| 080T0804 | 8 | 4 | 9 | 34 | 50 | 10,88 |
| 080T0806 | 8 | 6 | 11 | 36,9 | 50 | 10,10 |
| 080T1006 | 10 | 6 | 11 | 39,9 | 50 | 17,30 |
| 080T1008 | 10 | 8 | 13 | 39,3 | 50 | 14,44 |
| 080T1208 | 12 | 8 | 13 | 39,8 | 25 | 20,64 |
| 080T1210 | 12 | 10 | 16 | 41,9 | 25 | 20,56 |
| 080T1406 | 14 | 6 | 15 | 36,9 | 25 | 37,50 |

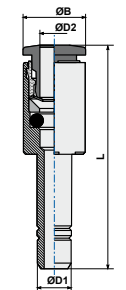


ART. **080T/E**

Plug-in increaser



| COD. | ØD1 | ØD2 | ØB | L | | |
|-----------|-----|-----|----|------|----|-------|
| 080TE0406 | 4 | 6 | 11 | 40,4 | 50 | 8,97 |
| 080TE0608 | 6 | 8 | 13 | 44 | 50 | 13,06 |

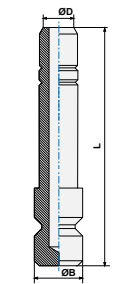


ART. **09**

Plug



| COD. | ØD | ØB | L | | |
|--------|----|----|------|----|------|
| 090400 | 4 | 5 | 26 | 50 | 3,1 |
| 090600 | 6 | 7 | 29 | 50 | 4,7 |
| 090800 | 8 | 9 | 31,5 | 50 | 7,7 |
| 091000 | 10 | 11 | 35 | 50 | 10,8 |
| 091200 | 12 | 13 | 37 | 25 | 14,5 |

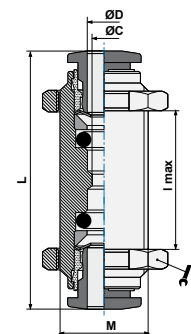


ART. **100T**

Bulkhead connector



| COD. | ØD | ØC | M | lmax | L | | | |
|----------|----|----|------|------|------|----|----|-------|
| 100T0400 | 4 | 3 | 11x1 | 14 | 32,7 | 14 | 50 | 18,19 |
| 100T0600 | 6 | 5 | 14x1 | 14,5 | 37,3 | 17 | 50 | 28,87 |
| 100T0800 | 8 | 7 | 16x1 | 15 | 38,6 | 18 | 50 | 33,60 |
| 100T1000 | 10 | 9 | 18x1 | 16,5 | 43,3 | 21 | 25 | 54,16 |
| 100T1200 | 12 | 11 | 22x1 | 18,6 | 46,4 | 26 | 25 | 79,55 |
| 100T1400 | 14 | 13 | 24x1 | 21,7 | 50 | 27 | 25 | 89,85 |

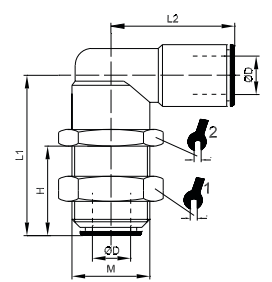


ART. **10LOT**

Elbow bulkhead



| COD. | ØD | M | H | L1 | L2 | | | | |
|-----------|----|-------|------|------|----|----|----|----|-------|
| 10LOT0400 | 4 | M11x1 | 12,5 | 25,5 | 20 | 13 | 13 | 50 | 24,76 |
| 10LOT0600 | 6 | M14x1 | 15 | 28 | 21 | 17 | 17 | 50 | 34,11 |
| 10LOT0800 | 8 | M16x1 | 17 | 30,5 | 24 | 18 | 18 | 50 | 38,59 |
| 10LOT1000 | 10 | M18x1 | 19 | 35 | 27 | 21 | 21 | 25 | 62,49 |

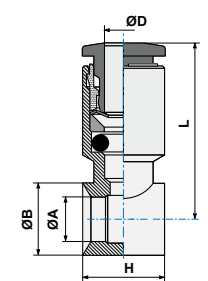


ART. **130T**

Single banjo body



| COD. | ØD | G* | ØA | ØB | H | L | | |
|-----------|----|-----|-------|----|----|-------|----|-------|
| 130T04M5 | 4 | M5 | 5 | 9 | 9 | 19,85 | 50 | 7,05 |
| 130T0418 | 4 | 1/8 | 9,9 | 14 | 15 | 21,65 | 50 | 14,57 |
| 130T0618 | 6 | 1/8 | 9,9 | 14 | 15 | 24,9 | 50 | 15,70 |
| 130T0614 | 6 | 1/4 | 13,3 | 18 | 17 | 26,1 | 50 | 21,92 |
| 130T0818 | 8 | 1/8 | 9,9 | 14 | 15 | 25,15 | 50 | 16,39 |
| 130T0814 | 8 | 1/4 | 13,3 | 18 | 17 | 26,8 | 50 | 22,57 |
| 130T0838 | 8 | 3/8 | 16,75 | 21 | 20 | 28,3 | 50 | 29,39 |
| 130T1014 | 10 | 1/4 | 13,3 | 18 | 17 | 28,9 | 50 | 30,58 |
| 130T1038 | 10 | 3/8 | 16,75 | 21 | 20 | 30,35 | 25 | 34,90 |
| 130T1214 | 12 | 1/4 | 13,3 | 18 | 17 | 30,7 | 25 | 35,12 |
| 130T1238 | 12 | 3/8 | 16,75 | 21 | 20 | 31,6 | 25 | 37,14 |
| 130T1212 | 12 | 1/2 | 21 | 26 | 24 | 35,15 | 25 | 51,86 |
| 130TR04M5 | 4 | M5 | 6 | 9 | 10 | 19,85 | 50 | 5,65 |
| 130TR06M5 | 6 | M5 | 6 | 9 | 10 | 22,1 | 50 | 7,02 |

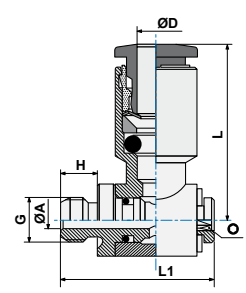


ART. **150T**

Complete single banjo (rotating under pressure)



| COD. | ØD | G | ØA | H | L1 | L | ○ | | |
|----------|----|-----|-----|-----|------|-------|-----|----|--------|
| 150T04M5 | 4 | M5 | 2 | 4 | 16,8 | 19,85 | 2,5 | 50 | 9,61 |
| 150T04M6 | 4 | M6 | 2 | 5 | 17,8 | 19,85 | 2,5 | 50 | 9,74 |
| 150T0418 | 4 | 1/8 | 5,5 | 5,5 | 24,5 | 21,65 | 3 | 50 | 24,12 |
| 150T06M5 | 6 | M5 | 2 | 4 | 16,8 | 22,4 | 2,5 | 50 | 10,82 |
| 150T0618 | 6 | 1/8 | 5,5 | 5,5 | 24,5 | 24,9 | 3 | 50 | 24,84 |
| 150T0614 | 6 | 1/4 | 7,8 | 6,5 | 27,8 | 26,1 | 4 | 50 | 40,32 |
| 150T0818 | 8 | 1/8 | 5,5 | 5,5 | 24,5 | 25,15 | 3 | 50 | 25,96 |
| 150T0814 | 8 | 1/4 | 7,8 | 6,5 | 27,8 | 26,8 | 4 | 50 | 41,19 |
| 150T0838 | 8 | 3/8 | 10 | 7,5 | 32,5 | 28,3 | 5 | 25 | 61,83 |
| 150T1014 | 10 | 1/4 | 7,8 | 6,5 | 27,8 | 28,9 | 4 | 25 | 49,51 |
| 150T1038 | 10 | 3/8 | 10 | 7,5 | 32,5 | 30,35 | 5 | 25 | 68,41 |
| 150T1214 | 12 | 1/4 | 7,8 | 6,5 | 27,8 | 30,85 | 4 | 25 | 51,38 |
| 150T1238 | 12 | 3/8 | 10 | 7,5 | 32,5 | 31,6 | 5 | 25 | 69,72 |
| 150T1212 | 12 | 1/2 | 12 | 9 | 38,8 | 35,15 | 8 | 10 | 114,78 |

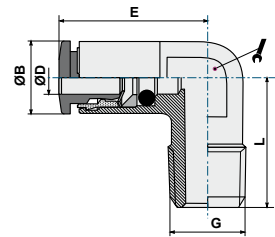


ART. **190T**

Elbow male adaptor



| COD. | ØD | G | ØB | E | L | | | |
|----------|----|-----|----|-------|------|----|-----|-------|
| 190T0418 | 4 | 1/8 | 9 | 19,35 | 16,5 | 10 | 100 | 12,83 |
| 190T0618 | 6 | 1/8 | 11 | 24,4 | 16,5 | 10 | 100 | 14,84 |
| 190T0614 | 6 | 1/4 | 11 | 25,4 | 22 | 11 | 100 | 20,81 |
| 190T0818 | 8 | 1/8 | 13 | 25,3 | 18,5 | 11 | 100 | 18,26 |
| 190T0814 | 8 | 1/4 | 13 | 25,3 | 22,0 | 11 | 100 | 20,94 |
| 190T1014 | 10 | 1/4 | 16 | 26,9 | 23,5 | 13 | 50 | 30,26 |

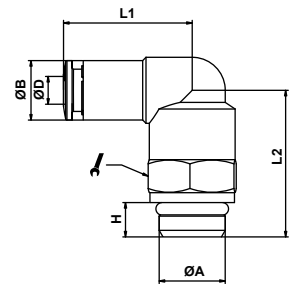


220T

Swivel elbow male adaptor (parallel)



| COD. | ØD | A | H | ØB | L1 | L2 | | | |
|-----------|----|---------|-----|-----|-------|------|----|-----|-------|
| 220T04M5 | 4 | M5 | 4 | 9,1 | 18,55 | 14,8 | 9 | 100 | 10,10 |
| 220T04M12 | 4 | M12x1,5 | 6,5 | 9,1 | 20,35 | 22,4 | 13 | 100 | 11,55 |
| 220T0418 | 4 | 1/8 | 5,5 | 9,1 | 20,35 | 19,9 | 13 | 100 | 19,00 |
| 220T0414 | 4 | 1/4 | 6,5 | 9,1 | 20,35 | 22,7 | 13 | 100 | 22,80 |
| 220T0438 | 4 | 3/8 | 7,5 | 9,1 | 20,35 | 24,9 | 13 | 100 | 27,60 |
| 220T06M5 | 6 | M5 | 4 | 11 | 22,4 | 15 | 9 | 100 | 12,12 |
| 220T06M12 | 6 | M12x1,5 | 6,5 | 11 | 23,9 | 22,2 | 13 | 100 | 14,11 |
| 220T0618 | 6 | 1/8 | 5,5 | 11 | 23,9 | 19,7 | 13 | 100 | 21,02 |
| 220T0614 | 6 | 1/4 | 6,5 | 11 | 23,9 | 22,7 | 13 | 100 | 24,11 |
| 220T0638 | 6 | 3/8 | 7,5 | 11 | 23,9 | 24,7 | 13 | 100 | 29,49 |
| 220T08M12 | 8 | M12x1,5 | 6,5 | 13 | 24,3 | 22,2 | 13 | 100 | 24,55 |
| 220T0818 | 8 | 1/8 | 5,5 | 13 | 23,95 | 19,7 | 13 | 100 | 20,57 |
| 220T0814 | 8 | 1/4 | 6,5 | 13 | 24,3 | 22,7 | 13 | 50 | 23,67 |
| 220T0838 | 8 | 3/8 | 7,5 | 13 | 24,3 | 24,7 | 13 | 50 | 30,23 |
| 220T1014 | 10 | 1/4 | 6,5 | 16 | 28,4 | 22,6 | 16 | 50 | 37,68 |
| 220T1038 | 10 | 3/8 | 7,5 | 16 | 28,4 | 26,6 | 16 | 50 | 43,70 |
| 220T1012 | 10 | 1/2 | 9 | 16 | 28,4 | 28,1 | 16 | 50 | 48,40 |
| 220T1214 | 12 | 1/4 | 6,5 | 19 | 31,4 | 29,2 | 16 | 25 | 64,75 |
| 220T1238 | 12 | 3/8 | 7,5 | 19 | 31,4 | 27,2 | 20 | 25 | 63,21 |
| 220T1212 | 12 | 1/2 | 9 | 19 | 31,4 | 31,7 | 20 | 25 | 73,27 |
| 220T1438 | 14 | 3/8 | 7,5 | 21 | 32,0 | 28,5 | 20 | 25 | 62,54 |
| 220T1412 | 14 | 1/2 | 9 | 21 | 32,0 | 33,5 | 20 | 25 | 75,98 |

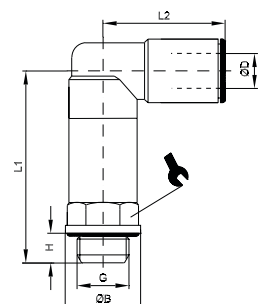


22LOT

Swivel longer elbow male adaptor (parallel)



| COD. | ØD | G | ØB | H | L1 | L2 | | | |
|-----------|----|------|----|-----|------|-------|----|----|-------|
| 22LOT0418 | 4 | G1/8 | 13 | 5,5 | 33,2 | 20,35 | 13 | 25 | 30,34 |
| 22LOT0414 | 4 | G1/4 | 16 | 6,5 | 38,2 | 20,35 | 13 | 25 | 33,72 |
| 22LOT0618 | 6 | G1/8 | 13 | 5,5 | 33 | 23,9 | 13 | 25 | 32,04 |
| 22LOT0614 | 6 | G1/4 | 16 | 6,5 | 38 | 23,9 | 13 | 25 | 35,72 |
| 22LOT0818 | 8 | G1/8 | 13 | 5,5 | 33 | 24 | 13 | 25 | 31,97 |
| 22LOT0814 | 8 | G1/4 | 16 | 6,5 | 38 | 24,3 | 13 | 25 | 35,46 |
| 22LOT1014 | 10 | G1/4 | 16 | 6,5 | 40,5 | 28,4 | 16 | 25 | 57,49 |

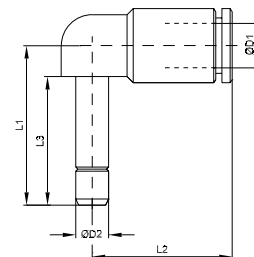


ART. 220TLO

Plug-in elbow connector



| COD. | ØD1 | ØD2 | L1 | L2 | L3 | | |
|----------|-----|-----|------|-------|------|----|-------|
| 220T04L0 | 4 | 4 | 25,2 | 20,35 | 16,2 | 50 | 22,12 |
| 220T06L0 | 6 | 6 | 28,5 | 23,9 | 19,5 | 50 | 28,25 |
| 220T08L0 | 8 | 8 | 30 | 24,3 | 21 | 50 | 29,15 |
| 220T10L0 | 10 | 10 | 35 | 28,4 | 24 | 25 | 27,07 |
| 220T12L0 | 12 | 12 | 38,5 | 31,4 | 25 | 25 | 32,45 |

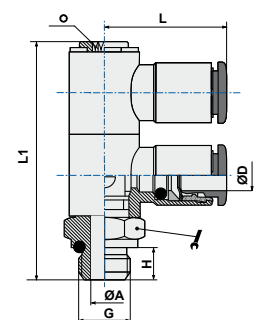


ART. 330T

Swivel double banjo stem



| COD. | ØD | G | ØA | H | L1 | L | | | | |
|----------|----|-----|-----|-----|------|-------|----|---|----|-------|
| 330T0418 | 4 | 1/8 | 5,5 | 5,5 | 43,3 | 21,65 | 14 | 3 | 25 | 46,81 |
| 330T0618 | 6 | 1/8 | 5,5 | 5,5 | 43,3 | 24,9 | 14 | 3 | 25 | 48,46 |
| 330T0614 | 6 | 1/4 | 7,8 | 6,5 | 50 | 26,1 | 18 | 4 | 25 | 78,57 |
| 330T0818 | 8 | 1/8 | 5,5 | 5,5 | 43,3 | 25,1 | 14 | 3 | 25 | 52,14 |
| 330T0814 | 8 | 1/4 | 7,8 | 6,5 | 50 | 26,8 | 18 | 4 | 25 | 80,02 |
| 330T1014 | 10 | 1/4 | 7,8 | 6,5 | 50 | 28,9 | 18 | 4 | 25 | 97,00 |



ART. 340T

Swivel triple banjo stem



| COD. | ØD | G | ØA | H | L1 | L | | | | |
|----------|----|-----|-----|-----|------|-------|----|---|----|--------|
| 340T0418 | 4 | 1/8 | 5,5 | 5,5 | 58,4 | 21,65 | 14 | 3 | 10 | 44,10 |
| 340T0618 | 6 | 1/8 | 5,5 | 5,5 | 58,4 | 24,9 | 14 | 3 | 10 | 66,93 |
| 340T0614 | 6 | 1/4 | 7,8 | 6,5 | 67,1 | 26,1 | 18 | 4 | 10 | 107,87 |
| 340T0818 | 8 | 1/8 | 5,5 | 5,5 | 58,4 | 25,1 | 14 | 3 | 10 | 110,86 |
| 340T0814 | 8 | 1/4 | 7,8 | 6,5 | 67,1 | 26,8 | 18 | 4 | 10 | 115,56 |
| 340T1014 | 10 | 1/4 | 7,8 | 6,5 | 67,1 | 28,9 | 18 | 4 | 10 | 127,50 |

