



## Series 105

The series 105 consist of a broad range of miniature valves and valves with various type of actuation.

The connections are M5 for this series

Due to their special construction with a balanced spool, these valves can be used interchangeably as 3 ways or 5 ways.

The 3 ways can be used normally closed or normally open and the 5 ways can be fed through the exhausts 3 and 5 with different pressures according to the need.

The spool, as it is moving, isolates the connections without being affected by the inlet pressure.

1  
AIR DISTRIBUTION

### Construction characteristics

	M5
Body	Aluminium
Spacers	Technopolymer
Seals	NBR
Springs	Spring steel
Operators	Nickel plated brass Stainless steel for roller levers and button levers; Zinc plated steel for side levers; Plastic material for handles, buttons and switches Aluminium (for pneumatic command version)
Pistons	Aluminium (for pneumatic command version)
Spools	Steel

### Use and maintenance

This valves have an average life of 15 million cycles depending on the application and air quality.

Filtered and lubricated air using specified lubricants will reduce the wear of the seals and ensures long and trouble free operation.

Please ensure that the valve is being used according with the manufacturers specification, such as air pressure and temperature.

The exhaust port of the distributor has to be protected in a dusty and dirty environment.

Repair kits including the spool complete with seals are available for overhauling the valves.

However, although this is a simple operation it should be carried out by a competent person.

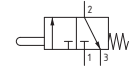
**ATTENTION:** use hydraulic oil class H for lubrication such as CASTROL MAGNA SW32.

**Tappet panel - Spring**

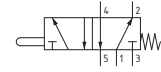
Coding: 105.1.0.1

Operational characteristics	
Fluid	Filtered air. No lubrication needed, if applied it shall be continuous
Max. working pressure (bar)	10
Temperature °C	-5 ... +70
Flow rate at 6 bar with $\Delta p=1$ (NI/min)	120
Orifice size (mm)	2.5
Working ports size	M5

TYPE	
1	32 = 3 ways, 2 positions
	52 = 5 ways, 2 positions

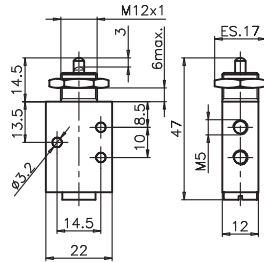


105.32.0.1



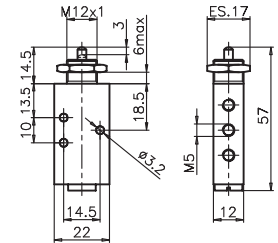
105.52.0.1

3/2 ways



Weight 70 g  
Operating force 14 N

5/2 ways



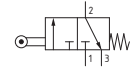
Weight 87 g  
Operating force 14 N

**Lever roller - Spring**

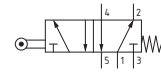
Coding: 105.1.2.1

Operational characteristics	
Fluid	Filtered air. No lubrication needed, if applied it shall be continuous
Max. working pressure (bar)	10
Temperature °C	-5 ... +70
Flow rate at 6 bar with $\Delta p=1$ (NI/min)	120
Orifice size (mm)	2.5
Working ports size	M5

TYPE	
1	32 = 3 ways, 2 positions
	52 = 5 ways, 2 positions

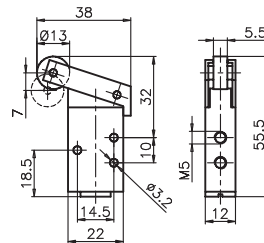


105.32.2.1



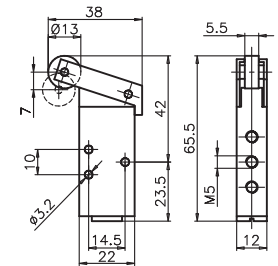
105.52.2.1

3/2 ways



Weight 85 g  
Operating force 6 N

5/2 ways



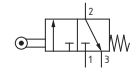
Weight 102 g  
Operating force 6 N

**Lever roller ball bearing - Spring**

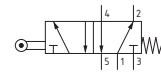
Coding: 105.1.2.1/1

Operational characteristics	
Fluid	Filtered air. No lubrication needed, if applied it shall be continuous
Max. working pressure (bar)	10
Temperature °C	-5 ... +70
Flow rate at 6 bar with $\Delta p=1$ (NI/min)	120
Orifice size (mm)	2.5
Working ports size	M5

TYPE	
1	32 = 3 ways, 2 positions
	52 = 5 ways, 2 positions

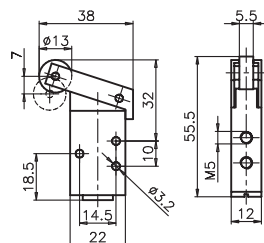


105.32.2.1/1



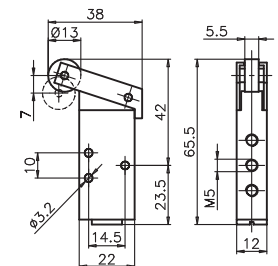
105.52.2.1/1

3/2 ways



Weight 100 g  
Operating force 6 N

5/2 ways



Weight 177 g  
Operating force 6 N

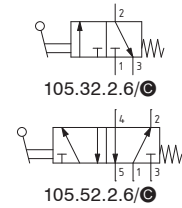
**Lever button - Spring**

Coding: 105.1.2.6/C

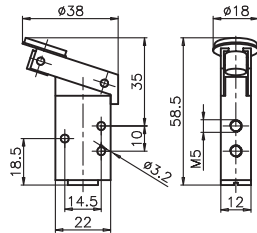
**Operational characteristics**

Fluid	Filtered air. No lubrication needed, if applied it shall be continuous
Max. working pressure (bar)	10
Temperature °C	-5 ... +70
Flow rate at 6 bar with Δp=1 (NI/min)	120
Orifice size (mm)	2.5
Working ports size	M5

TYPE	32 = 3 ways, 2 positions 52 = 5 ways, 2 positions
LEVER COLOR	1 = Red 2 = Black 3 = Green

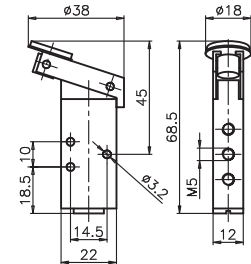


3/2 ways



Weight 85 g  
Operating force 6 N

5/2 ways



Weight 102 g  
Operating force 6 N

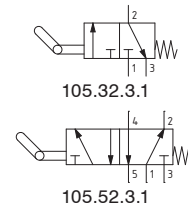
**Lever unidirectional - Spring**

Coding: 105.1.3.1

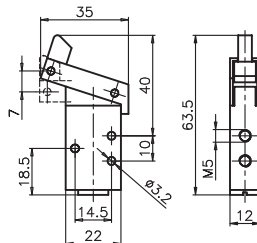
**Operational characteristics**

Fluid	Filtered air. No lubrication needed, if applied it shall be continuous
Max. working pressure (bar)	10
Temperature °C	-5 ... +70
Flow rate at 6 bar with Δp=1 (NI/min)	120
Orifice size (mm)	2.5
Working ports size	M5

TYPE	32 = 3 ways, 2 positions 52 = 5 ways, 2 positions
------	--

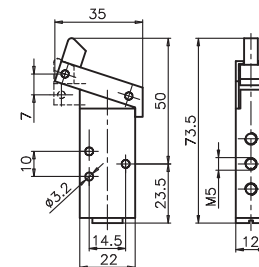


3/2 ways



Weight 85 g  
Operating force 6 N

5/2 ways



Weight 102 g  
Operating force 6 N

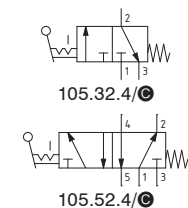
**Lever panel Ø22 - 2 positions**

Coding: 105.1.4/C

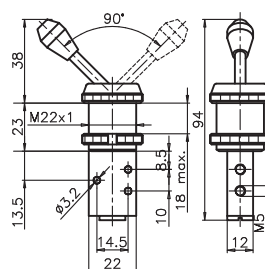
**Operational characteristics**

Fluid	Filtered air. No lubrication needed, if applied it shall be continuous
Max. working pressure (bar)	10
Temperature °C	-5 ... +70
Flow rate at 6 bar with Δp=1 (NI/min)	120
Orifice size (mm)	2.5
Working ports size	M5

TYPE	32 = 3 ways, 2 positions 52 = 5 ways, 2 positions
LEVER COLOR	1 = Red 2 = Black 3 = Green

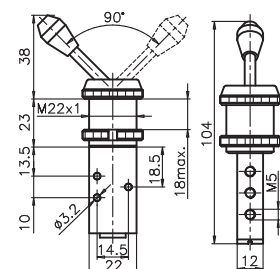


3/2 ways



Weight 125 g

5/2 ways



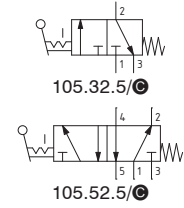
Weight 142 g

### Lever panel Ø30 - 2 positions

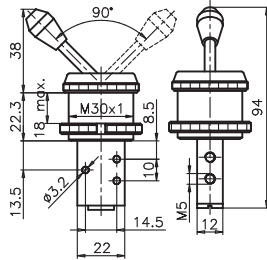
Coding: 105.1.5/C

Operational characteristics	
Fluid	Filtered air. No lubrication needed, if applied it shall be continuous
Max. working pressure (bar)	10
Temperature °C	-5 ... +70
Flow rate at 6 bar with $\Delta p=1$ (NI/min)	120
Orifice size (mm)	2.5
Working ports size	M5

<b>T</b>	TYPE
	32 = 3 ways, 2 positions
	52 = 5 ways, 2 positions
<b>C</b>	LEVER COLOR
	1 = Red
	2 = Black
	3 = Green

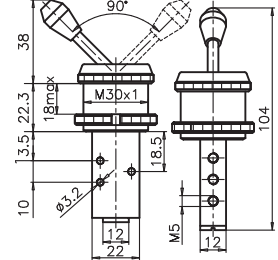


3/2 ways



Weight 165 g

5/2 ways



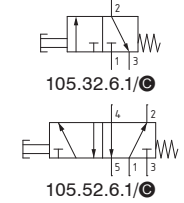
Weight 182 g

### Push button Ø30 - Spring

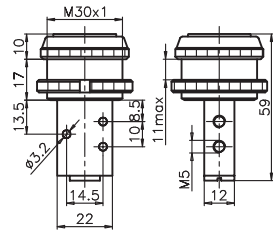
Coding: 105.1.6.1/C

Operational characteristics	
Fluid	Filtered air. No lubrication needed, if applied it shall be continuous
Max. working pressure (bar)	10
Temperature °C	-5 ... +70
Flow rate at 6 bar with $\Delta p=1$ (NI/min)	120
Orifice size (mm)	2.5
Working ports size	M5

<b>T</b>	TYPE
	32 = 3 ways, 2 positions
	52 = 5 ways, 2 positions
<b>C</b>	BUTTON COLOR
	1 = Red
	2 = Black
	3 = Green

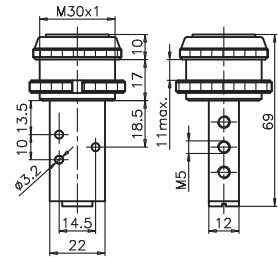


3/2 ways



Weight 123 g  
Operating force 14 N

5/2 ways



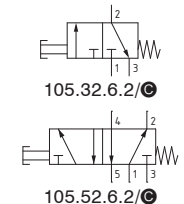
Weight 140 g  
Operating force 14 N

### Push button Ø22 - Spring

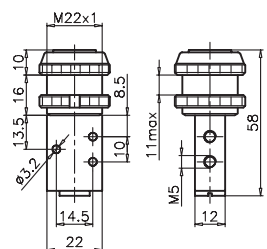
Coding: 105.1.6.2/C

Operational characteristics	
Fluid	Filtered air. No lubrication needed, if applied it shall be continuous
Max. working pressure (bar)	10
Temperature °C	-5 ... +70
Flow rate at 6 bar with $\Delta p=1$ (NI/min)	120
Orifice size (mm)	2.5
Working ports size	M5

<b>T</b>	TYPE
	32 = 3 ways, 2 positions
	52 = 5 ways, 2 positions
<b>C</b>	BUTTON COLOR
	1 = Red
	2 = Black
	3 = Green

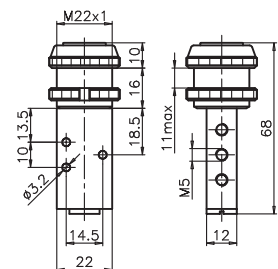


3/2 ways



Weight 102 g  
Operating force 14 N

5/2 ways



Weight 119 g  
Operating force 14 N

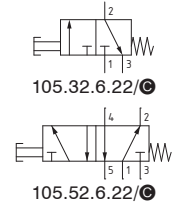
**Push button - Spring**

Coding: 105.1.6.22/C

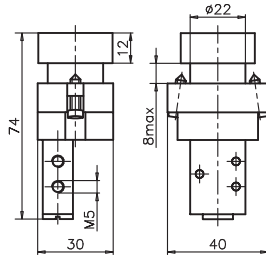
**Operational characteristics**

Fluid	Filtered air. No lubrication needed, if applied it shall be continuous
Max. working pressure (bar)	10
Temperature °C	-5 ... +70
Flow rate at 6 bar with Δp=1 (NI/min)	120
Orifice size (mm)	2.5
Working ports size	M5

TYPE	32 = 3 ways, 2 positions 52 = 5 ways, 2 positions
BUTTON COLOR	1 = Red 2 = Black 3 = Green 4 = Yellow

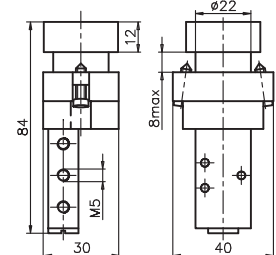


3/2 ways



Weight 165 g  
Operating force 14 N

5/2 ways



Weight 182 g  
Operating force 14 N

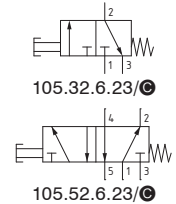
**Raised Push button - Spring**

Coding: 105.1.6.23/C

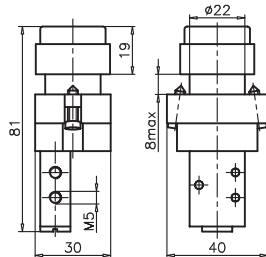
**Operational characteristics**

Fluid	Filtered air. No lubrication needed, if applied it shall be continuous
Max. working pressure (bar)	10
Temperature °C	-5 ... +70
Flow rate at 6 bar with Δp=1 (NI/min)	120
Orifice size (mm)	2.5
Working ports size	M5

TYPE	32 = 3 ways, 2 positions 52 = 5 ways, 2 positions
BUTTON COLOR	1 = Red 2 = Black 3 = Green 4 = Yellow

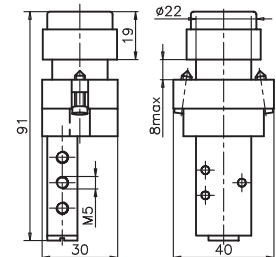


3/2 ways



Weight 170 g  
Operating force 14 N

5/2 ways



Weight 187 g  
Operating force 14 N

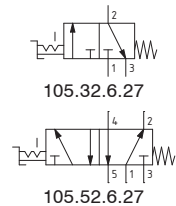
**Switch 2 positions**

Coding: 105.1.6.27

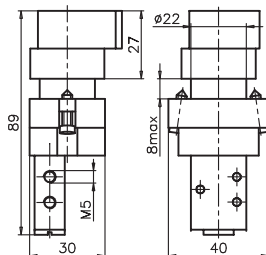
**Operational characteristics**

Fluid	Filtered air. No lubrication needed, if applied it shall be continuous
Max. working pressure (bar)	10
Temperature °C	-5 ... +70
Flow rate at 6 bar with Δp=1 (NI/min)	120
Orifice size (mm)	2.5
Working ports size	M5

TYPE	32 = 3 ways, 2 positions 52 = 5 ways, 2 positions
------	--

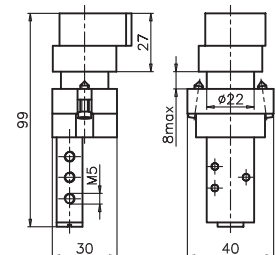


3/2 ways



Weight 185 g

5/2 ways



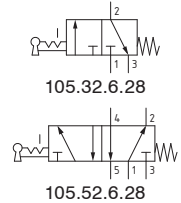
Weight 202 g

Key switch 2 positions

Coding: 105.1.6.28

Operational characteristics	
Fluid	Filtered air. No lubrication needed, if applied it shall be continuous
Max. working pressure (bar)	10
Temperature °C	-5 ... +70
Flow rate at 6 bar with $\Delta p=1$ (NI/min)	120
Orifice size (mm)	2.5
Working ports size	M5

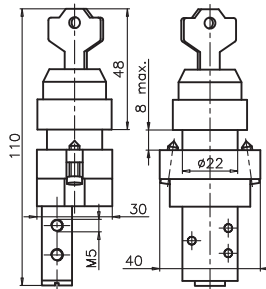
TYPE	
1	32 = 3 ways, 2 positions 52 = 5 ways, 2 positions



3/2 ways



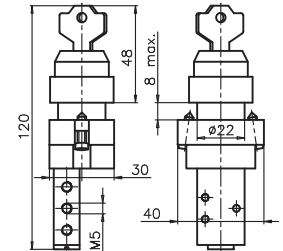
Weight 215 g



5/2 ways



Weight 232 g

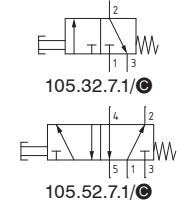


Palm pushbutton Ø30 - Spring

Coding: 105.1.7.1/C

Operational characteristics	
Fluid	Filtered air. No lubrication needed, if applied it shall be continuous
Max. working pressure (bar)	10
Temperature °C	-5 ... +70
Flow rate at 6 bar with $\Delta p=1$ (NI/min)	120
Orifice size (mm)	2.5
Working ports size	M5

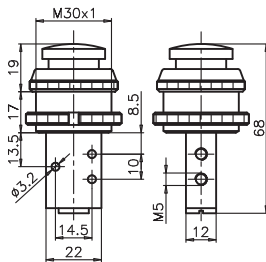
TYPE	
1	32 = 3 ways, 2 positions 52 = 5 ways, 2 positions
BUTTON COLOR	
C	1 = Red 2 = Black 3 = Green



3/2 ways



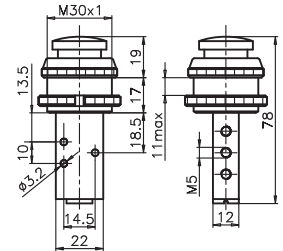
Weight 126 g  
Operating force 14 N



5/2 ways



Weight 143 g  
Operating force 14 N

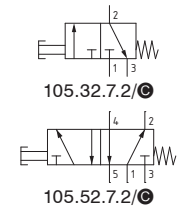


Palm pushbutton Ø22 - Spring

Coding: 105.1.7.2/C

Operational characteristics	
Fluid	Filtered air. No lubrication needed, if applied it shall be continuous
Max. working pressure (bar)	10
Temperature °C	-5 ... +70
Flow rate at 6 bar with $\Delta p=1$ (NI/min)	120
Orifice size (mm)	2.5
Working ports size	M5

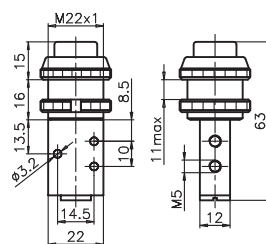
TYPE	
1	32 = 3 ways, 2 positions 52 = 5 ways, 2 positions
BUTTON COLOR	
C	1 = Red 2 = Black 3 = Green



3/2 ways



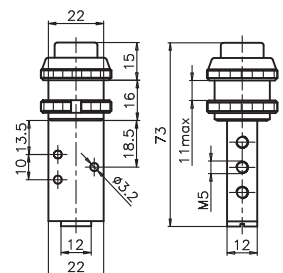
Weight 103 g  
Operating force 14 N



5/2 ways



Weight 120 g  
Operating force 14 N



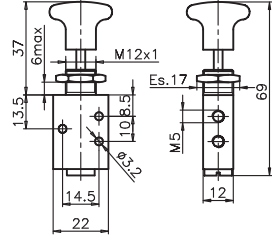
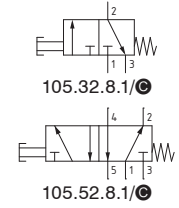
**Push button**

Coding: 105.1.8.1/C

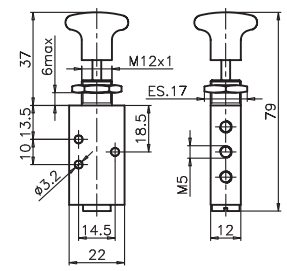
**Operational characteristics**

Fluid	Filtered air. No lubrication needed, if applied it shall be continuous
Max. working pressure (bar)	10
Temperature °C	-5 ... +70
Flow rate at 6 bar with Δp=1 (NI/min)	120
Orifice size (mm)	2.5
Working ports size	M5

TYPE	32 = 3 ways, 2 positions 52 = 5 ways, 2 positions
BUTTON COLOR	1 = Red 2 = Black 3 = Green



Weight 75 g  
Operating force 14 N



Weight 92 g  
Operating force 14 N

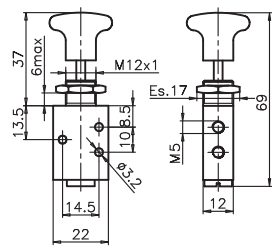
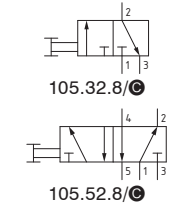
**Push button 2 positions**

Coding: 105.1.8/C

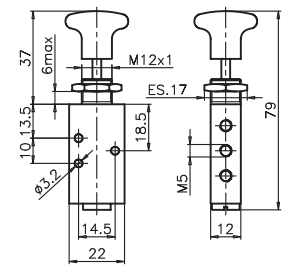
**Operational characteristics**

Fluid	Filtered air. No lubrication needed, if applied it shall be continuous
Max. working pressure (bar)	10
Temperature °C	-5 ... +70
Flow rate at 6 bar with Δp=1 (NI/min)	120
Orifice size (mm)	2.5
Working ports size	M5

TYPE	32 = 3 ways, 2 positions 52 = 5 ways, 2 positions
BUTTON COLOR	1 = Red 2 = Black 3 = Green



Weight 75 g  
Operating force 14 N



Weight 92 g  
Operating force 14 N

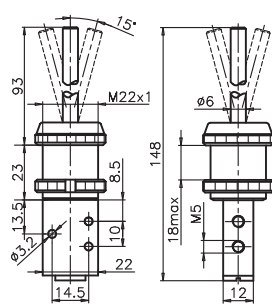
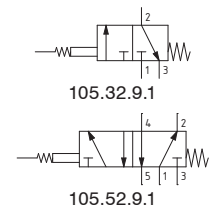
**Whisker - Spring**

Coding: 105.1.9.1

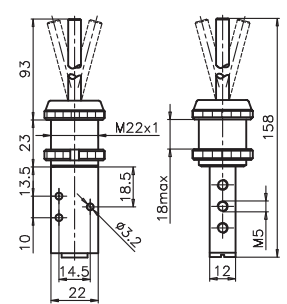
**Operational characteristics**

Fluid	Filtered air. No lubrication needed, if applied it shall be continuous
Max. working pressure (bar)	10
Temperature °C	-5 ... +70
Flow rate at 6 bar with Δp=1 (NI/min)	120
Orifice size (mm)	2.5
Working ports size	M5

TYPE	32 = 3 ways, 2 positions 52 = 5 ways, 2 positions
------	--



Weight 136 g



Weight 153 g

AIR DISTRIBUTION

1

Handle with valve

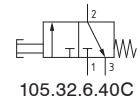
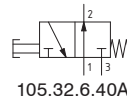
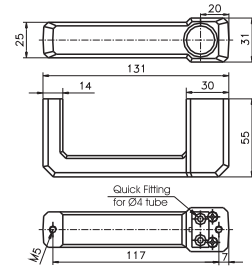
Coding: 105. **T**.6.**A**.**F**

Operational characteristics	
Fluid	Filtered air. No lubrication needed, if applied it shall be continuous
Max. working pressure (bar)	10
Temperature °C	-5 ... +70
Flow rate at 6 bar with $\Delta p=1$ (NI/min)	120
Orifice size (mm)	2.5
Working ports size	M5 - Quick Fitting for $\varnothing 4$ tube

TYPE	FUNCTION (only for 3 ways)
<b>T</b> 32 = 3 ways, 2 positions	<b>F</b> A = Normally Open
52 = 5 ways, 2 positions	C = Normally Closed
FEEDING	
<b>A</b> 40 = Left feeding	
40D = Right feeding	

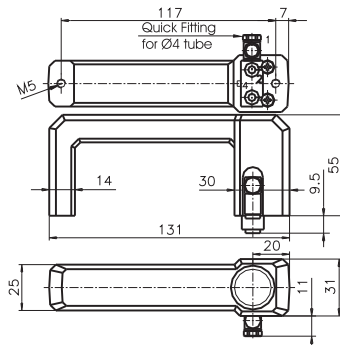


Weight 165 g  
Operating force 14 N

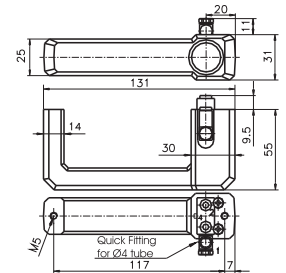
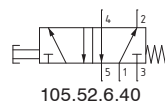


Left feeding

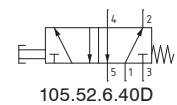
Right feeding



Weight 190 g  
Operating force 14 N



Weight 190 g  
Operating force 14 N



1  
AIR DISTRIBUTION

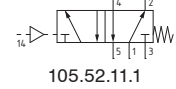
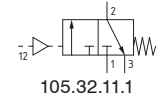
**Pneumatic - Spring**

Coding: 105.11.1

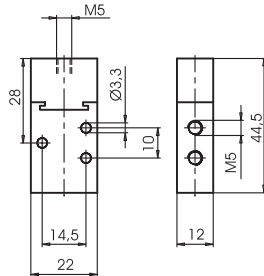
**Operational characteristics**

Fluid	Filtered air. No lubrication needed, if applied it shall be continuous
Max. working pressure (bar)	10
Temperature °C	-5 ... +70
Flow rate at 6 bar with Δp=1 (NI/min)	120
Orifice size (mm)	2.5
Working ports size	M5
Pilot ports size	M5

TYPE
32 = 3 ways, 2 positions
52 = 5 ways, 2 positions

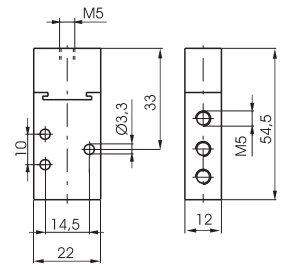


3/2 ways



Weight 90 g  
Minimum pilot pressure 2,5 bar

5/2 ways



Weight 100 g  
Minimum pilot pressure 2,5 bar

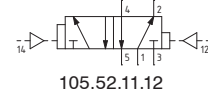
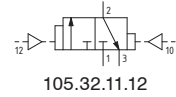
**Pneumatic - Differential**

Coding: 105.11.12

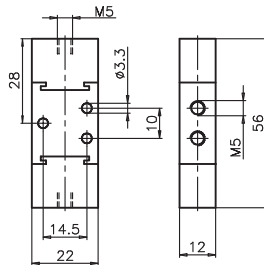
**Operational characteristics**

Fluid	Filtered air. No lubrication needed, if applied it shall be continuous
Max. working pressure (bar)	10
Temperature °C	-5 ... +70
Flow rate at 6 bar with Δp=1 (NI/min)	120
Orifice size (mm)	2.5
Working ports size	M5
Pilot ports size	M5

TYPE
32 = 3 ways, 2 positions
52 = 5 ways, 2 positions

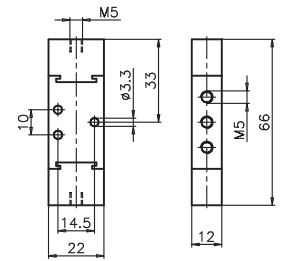


3/2 ways



Weight 110 g  
Minimum pilot pressure 2,5 bar

5/2 ways



Weight 120 g  
Minimum pilot pressure 2,5 bar

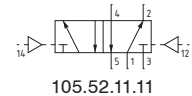
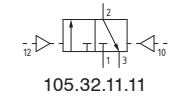
**Pneumatic-Pneumatic**

Coding: 105.11.11

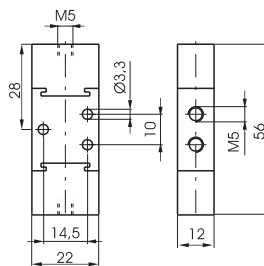
**Operational characteristics**

Fluid	Filtered air. No lubrication needed, if applied it shall be continuous
Max. working pressure (bar)	10
Temperature °C	-5 ... +70
Flow rate at 6 bar with Δp=1 (NI/min)	120
Orifice size (mm)	2.5
Working ports size	M5
Pilot ports size	M5

TYPE
32 = 3 ways, 2 positions
52 = 5 ways, 2 positions

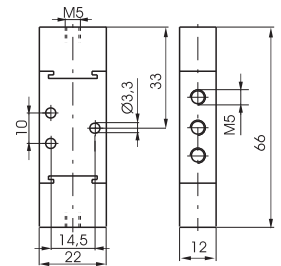


3/2 ways



Weight 110 g  
Minimum pilot pressure 2,5 bar

5/2 ways



Weight 120 g  
Minimum pilot pressure 2,5 bar