



PNEUMAX



PNEUMAX FLUID CONTROL

CATALOGUE



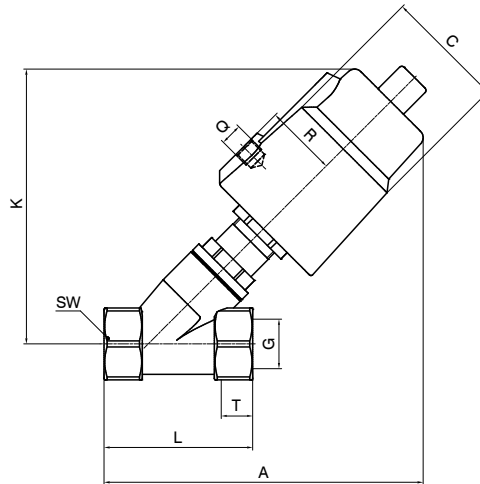
Series PVF

Angle seat valves with AISI 316 or 304 stainless steel body.

▶ **2-way angle seat valve. Threaded ports (Designed to prevent water hammer) - 1/4" ... 3"**



II 2G Ex h IIC T4..T2 Gb X
II 2D Ex h IIC T130°C..T°230 Db X
-10°C ≤ Ta ≤ +80°C



Ordering code	
PVF(A)(T)-M	
ACTUATOR	40= Ø40 mm (only for size Ø8, Ø10, Ø15) 50= Ø50 mm (only for size Ø8, Ø10, Ø15, Ø20, Ø25) 63= Ø63 mm (only for size Ø25, Ø32, Ø40, Ø50) 90= Ø90 mm (only for size Ø32, Ø40, Ø50) 125A = Ø125 mm (only for size Ø65, Ø80)
FUNCTION	0= N.A. 1= N.C.
ORIFICE SIZE (MM)	08= Ø8 (only for actuator Ø40 and Ø50 mm) 10= Ø10 (only for actuator Ø40 and Ø50 mm) 15= Ø15 (only for actuator Ø40 and Ø50 mm) 20= Ø20 (only for actuator Ø50 mm) 25= Ø25 (only for actuator Ø50 and Ø63 mm) 32= Ø32 (only for actuator Ø63 and Ø90 mm) 40= Ø40 (only for actuator Ø63 and Ø90 mm) 50= Ø50 (only for actuator Ø63 and Ø90 mm) 65= Ø65 (only for actuator Ø125A mm) 80= Ø80 (only for actuator Ø125A mm)
MATERIAL	304= AISI 304 316= AISI 316

PNEUMAX FLUID CONTROL

Table of dimensions

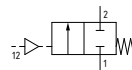
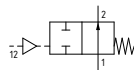
CODE	G	Actuator (mm)	C (mm)	R (mm)	K (mm)	Q (mm)	T (mm)	A (mm)	L (mm)	SW (mm)		
PVF40-08-M	1/4"	40	50,5	27	112	1/8"	12	124	68	27		
PVF50-08-M		50	60	33	125			135				
PVF40-10-M	3/8"	40	50,5	27	112			124				
PVF50-10-M		50	60	33	125		135					
PVF40-15-M	1/2"	40	50,5	27	111		15	119			75	32
PVF50-15-M		50	60	33	124		131					
PVF50-20-M	3/4"	50	60	33	132		16	140	90	40		
PVF50-25-M	1"	63	75	41	162		17	145	116	50		
PVF63-25-M							169					
PVF63-32-M	1-1/4"	90	106	55	223		21	187	116	56		
PVF90-32-M								235				
PVF63-40-M	1-1/2"	63	75	41	175			187	138	69		
PVF90-40-M						235						
PVF63-50-M	2"	63	75	41	223	201		250	138	69		
PVF90-50-M						232						
PVF125A-65-M	2-1/2"	125*	148	74	302	26	320	178	85			
PVF125A-80-M	3"					27	372	210	100			

* = aluminium

Technical data (N.O. - N.C. versions)

CODE	KV (m³/h)	Max. working pressure (bar)		Pilot pressure (bar)			
		N.O.	N.C.	N.O.	N.C.		
PVF40-08-M	2,2	16	13	3 ... 5	4 ... 8		
PVF50-08-M				3 ... 4	4,5 ... 8		
PVF40-10-M	3,9			3 ... 5	4 ... 8		
PVF50-10-M				3 ... 4	4,5 ... 8		
PVF40-15-M	4,3			3 ... 5	4 ... 8		
PVF50-15-M				3 ... 4	4,5 ... 8		
PVF50-20-M	7,6			14	3 ... 6	4,5 ... 8	
PVF50-25-M	15,8			13	8	3 ... 6	5 ... 8
PVF63-25-M				16	13	3 ... 5	5 ... 8
PVF63-32-M	26			13	6	3 ... 6	6 ... 8
PVF90-32-M				/	16	/	6 ... 8
PVF63-40-M	32			7	5	3 ... 6	5 ... 8
PVF90-40-M		16	16	3 ... 4	6 ... 8		
PVF63-50-M	52	5	2	3 ... 6	5 ... 8		
PVF90-50-M		12	10	3 ... 6	6 ... 8		
PVF125A-65-M	83,2	14	9	3 ... 7	5,5 ... 8		
PVF125A-80-M	119	12	5	3 ... 7	5,5 ... 10		

Pneumatic symbol



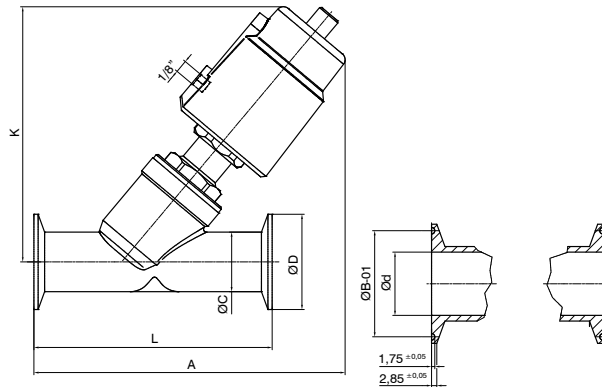
Construction characteristics	Technical characteristics (Valve body)	Technical characteristics (Actuator)
<ul style="list-style-type: none"> - High flow rate thanks to body configuration with inclined seating - Anti water hammer functioning with input below poppet - Pneumatically operated valve with stainless steel body, resistant to ambient corrosion - Self-levelling poppet to ensure improved sealing - Optical position indicator - Self-adjusting maintenance free stuffer seals package - Valves may be mounted in all positions <p>OPTIONS (on request):</p> <ul style="list-style-type: none"> - Double acting versions are available on request - Connection type: GAS ISO / NPT 	<ul style="list-style-type: none"> - Material: AISI 316/304 stainless steel - Fluid temperature: -10 °C ... +180 °C - Ambient temperature: -10 °C ... +80 °C - Fluid viscosity: max. 600cSt. - Poppet: PTFE - Seals package: PTFE and FKM - Fluid: dry or lubricated air, gases and neutral fluids, water and steam 	<ul style="list-style-type: none"> - Body: AISI 304 - Pilot fluid: dry or lubricated air, gas and neutral fluids - Fluid temperature: max. +60 °C



2-way angle seat valve. Clamp ISO 2852 (Designed to prevent water hammer)



II 2G Ex h IIC T4..T2 Gb X
II 2D Ex h IIC T130°C..T*230 Db X
-10°C ≤ Ta ≤ +80°C



Ordering code	
PVFAFK-M	
ACTUATOR	40= Ø40 mm (only for size Ø15)
A	50= Ø50 mm (only for size Ø15, Ø20, Ø25)
	63= Ø63 mm (only for size Ø25, Ø32, Ø40, Ø50)
	90= Ø90 mm (only for size Ø32, Ø40, Ø50)
FUNCTION	F 0= N.A.
	1= N.C.
ORIFICE SIZE (MM)	15= Ø15 (only for actuator Ø40 and Ø50 mm)
	20= Ø20 (only for actuator Ø50 mm)
T	25= Ø25 (only for actuator Ø50 and Ø63 mm)
	32= Ø32 (only for actuator Ø63 and Ø90 mm)
	40= Ø40 (only for actuator Ø63 and Ø90 mm)
	50= Ø50 (only for actuator Ø63 and Ø90 mm)
MATERIAL	M A= AISI 304
	B= AISI 316

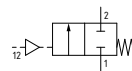
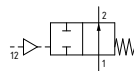
Table of dimensions

CODE	Actuator (mm)	A (mm)	K (mm)	L (mm)	C (mm)	B (mm)	Ød	ØD
PVF40-15K-M	40	130	115	80	19	27,5	15	34
PVF50-15K-M		140	126					
PVF50-20K-M	50	158	148	130	25	43,5	19	50,5
PVF50-25K-M		165	140					
PVF63-25K-M	63	188	166	146	37	56,5	31	64
PVF63-32K-M		200	174					
PVF90-32K-M	90	245	223	160	40	56,5	33	64
PVF63-40K-M	63	210	175					
PVF90-40K-M	90	255	223	175	53	56,5	45	64
PVF63-50K-M	63	221	185					
PVF90-50K-M	90	265	235					

Technical data (N.O. - N.C. versions)

CODE	KV (m³/h)	Max. working pressure (bar)		Pilot pressure (bar)	
		N.O.	N.C.	N.O.	N.C.
PVF40-15K-M	4,3	16	13	3 ... 5	4 ... 8
PVF50-15K-M			14	3 ... 4	4,5 ... 8
PVF50-20K-M	7,6		8	3 ... 6	
PVF50-25K-M	15,8	13	13	3 ... 5	5 ... 8
PVF63-25K-M		16	6	3 ... 6	
PVF63-32K-M	26	/	16	/	6 ... 8
PVF90-32K-M					
PVF63-40K-M	32	7	5	3 ... 6	5 ... 8
PVF90-40K-M		16	16	3 ... 4	6 ... 8
PVF63-50K-M	52	5	3	3 ... 6	5 ... 8
PVF90-50K-M		12	10		6 ... 8

Pneumatic symbol

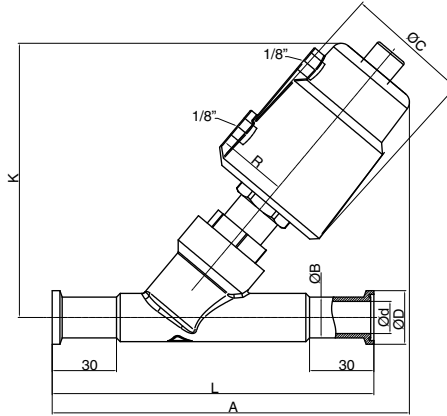


Construction characteristics	Technical characteristics (Valve body)	Technical characteristics (Actuator)
<ul style="list-style-type: none"> - High flow rate thanks to body configuration with inclined seating - Anti water hammer functioning with input below poppet - Pneumatically operated valve with stainless steel body, resistant to ambient corrosion - Self-levelling poppet to ensure improved sealing - Optical position indicator - Self-adjusting maintenance free stuffer seals package - Valves may be mounted in all positions <p>OPTIONS (on request):</p> <ul style="list-style-type: none"> - Double acting versions are available on request 	<ul style="list-style-type: none"> - Material: AISI 316/304 stainless steel - Fluid temperature: -10 °C ... +180 °C - Ambient temperature: -10 °C ... +80 °C - Fluid viscosity: max. 600cSt. - Poppet: PTFE - Seals package: PTFE and FKM - Fluid: dry or lubricated air, gases and neutral fluids, water and steam 	<ul style="list-style-type: none"> - Body: AISI 304 - Pilot fluid: dry or lubricated air, gas and neutral fluids - Fluid temperature: max. +60 °C

2-way angle seat valve ASME - BPE (Designed to prevent water hammer)



II 2G Ex h IIC T4..T2 Gb X
II 2D Ex h IIIC T130°C..T°230 Db X
-10°C ≤ Ta ≤ +80°C



Ordering code	
PVFA63J-M	
ACTUATOR	40= Ø40 mm (only for size Ø15)
A	50= Ø50 mm (only for size Ø15, Ø20, Ø25)
	63= Ø63 mm (only for size Ø25, Ø40, Ø50)
	90= Ø90 mm (only for size Ø40, Ø50)
FUNCTION	F 0= N.A.
	1= N.C.
ORIFICE SIZE (MM)	15= Ø15 (only for actuator Ø40 e Ø50 mm)
T	20= Ø20 (only for actuator Ø50 mm)
	25= Ø25 (only for actuator Ø50 e Ø63 mm)
	40= Ø40 (only for actuator Ø63 e Ø90 mm)
	50= Ø50 (only for actuator Ø63 e Ø90 mm)
MATERIAL	M A= AISI 304
	B= AISI 316

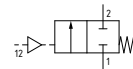
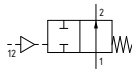
Table of dimensions

CODE	Actuator (mm)	C (mm)	R (mm)	K (mm)	A (mm)	L (mm)	ASME - BPE		
							ØD (mm)	ØB (mm)	Ød (mm)
PVF40 ^F 15J- ^M	40	50.5	27	127	158	130	25	12,7	9,4
PVF50 ^F 15J- ^M				140	169				
PVF50 ^F 20J- ^M	50	60	33	138	172	150	19,05	15,75	
PVF50 ^F 25J- ^M				146	180				
PVF63 ^F 25J- ^M	63	75	41	169	205	160	50,5	25,4	22,1
PVF63 ^F 40J- ^M				177	225				
PVF90 ^F 40J- ^M	90	106	55	225	267	200	38,1	34,8	
PVF63 ^F 50J- ^M	63	75	41	187	238	230	64	50,8	47,5
PVF90 ^F 50J- ^M	90	106	55	235	280				

Technical data (N.O. - N.C. versions)

CODICE	KV (m³/h)	Max. working pressure (bar)		Pilot pressure (bar)	
		N.O.	N.C.	N.O.	N.C.
PVF40 ^F 15J- ^M	1,7	16	13	3 ... 5	4 ... 8
PVF50 ^F 15J- ^M				3 ... 4	
PVF50 ^F 20J- ^M	5,8	11,8	8	3 ... 6	4,5 ... 8
PVF50 ^F 25J- ^M					
PVF63 ^F 25J- ^M	20,6	13	8	3 ... 5	5 ... 8
PVF63 ^F 40J- ^M		16	13	3 ... 5	
PVF90 ^F 40J- ^M	55,7	7	5	3 ... 6	6 ... 8
PVF63 ^F 50J- ^M		16	16	3 ... 4	6 ... 8
PVF90 ^F 50J- ^M		5	2	3 ... 6	5 ... 8
		12	10	6 ... 8	6 ... 8

Pneumatic symbol



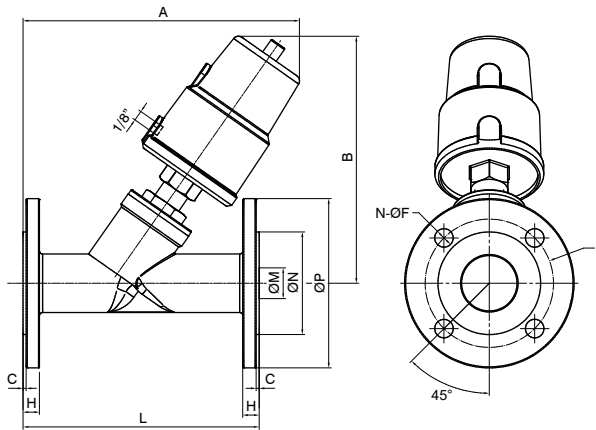
Construction characteristics	Technical characteristics (Valve body)	Technical characteristics (Actuator)
<ul style="list-style-type: none"> - High flow rate thanks to body configuration with inclined seating - Anti water hammer functioning with input below poppet - Pneumatically operated valve with stainless steel body, resistant to ambient corrosion - Self-levelling poppet to ensure improved sealing - Optical position indicator - Self-adjusting maintenance free stuffer seals package - Valves may be mounted in all positions <p>OPTIONS (on request):</p> <ul style="list-style-type: none"> - Double acting versions are available on request 	<ul style="list-style-type: none"> - Material: AISI 316/304 stainless steel - Fluid temperature: -10 °C ... +180 °C - Ambient temperature: -10 °C ... +80 °C - Fluid viscosity: max. 600cSt. - Poppet: PTFE - Seals package: PTFE and FKM - Fluid: dry or lubricated air, gases and neutral fluids, water and steam 	<ul style="list-style-type: none"> - Body: AISI 304 - Pilot fluid: dry or lubricated air, gas and neutral fluids - Fluid temperature: max. +60 °C



2-way angle seat valve. Flange mounting (Designed to prevent water hammer)



II 2G Ex h IIC T4..T2 Gb X
II 2D Ex h IIC T130°C..T*230 Db X
-10°C ≤ Ta ≤ +80°C



Ordering code	
PVF A C T F - M	
ACTUATOR	40= Ø40 mm (only for size Ø15)
A	50= Ø50 mm (only for size Ø15, Ø20, Ø25)
	63= Ø63 mm (only for size Ø25, Ø32, Ø40, Ø50)
	90= Ø90 mm (only for size Ø32, Ø40, Ø50)
FUNCTION	F 0= N.A.
	1= N.C.
ORIFICE SIZE (MM)	15= Ø15 (only for actuator Ø40 and Ø50 mm)
	20= Ø20 (only for actuator Ø50 mm)
T	25= Ø25 (only for actuator Ø50 and Ø63 mm)
	32= Ø32 (only for actuator Ø63 and Ø90 mm)
	40= Ø40 (only for actuator Ø63 and Ø90 mm)
	50= Ø50 (only for actuator Ø63 and Ø90 mm)
MATERIAL	M A= AISI 304
	B= AISI 316

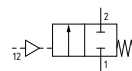
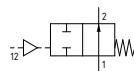
Table of dimensions

CODE	Actuator (mm)	A (mm)	B (mm)	L (mm)	C (mm)	H (mm)	ØE	N-ØF	ØM	ØN	ØP		
PVF40 C 15F- M	40	135	125	130	2	14	65	4-14	16	45	95		
PVF50 C 15F- M	50	145	140	150			75		19	56	105		
PVF50 C 20F- M		165	145	160			85		26	65	115		
PVF50 C 25F- M	63	190	175	180			3	16	100	4-18	31	78	140
PVF63 C 25F- M			188	200					110		38	84	150
PVF63 C 32F- M	206	190	125	49					100		165		
PVF90 C 32F- M	90	230	235	180	3	16			110	4-18	38	84	150
PVF63 C 40F- M	63	206	190	200					125		49	100	165
PVF90 C 40F- M	90	250	240	230					90		277	245	230
PVF63 C 50F- M	63	235	195	230									
PVF90 C 50F- M	90	277	245	230									

Technical data (N.O. - N.C. versions)

CODICE	KV (m³/h)	Max. working pressure (bar)		Pilot pressure (bar)	
		N.O.	N.C.	N.O.	N.C.
PVF40 C 15F- M	4,3	16	13	3 ... 5	4 ... 8
PVF50 C 15F- M			14	3 ... 4	4,5 ... 8
PVF50 C 20F- M	7,6	13	8	3 ... 6	
PVF50 C 25F- M	15,8		16	13	3 ... 5
PVF63 C 25F- M		26	13	6	3 ... 6
PVF90 C 32F- M	/		16	/	6 ... 8
PVF63 C 40F- M	32	7	5	3 ... 6	5 ... 8
PVF90 C 40F- M		16	16	3 ... 4	6 ... 8
PVF63 C 50F- M	52	5	2	3 ... 6	5 ... 8
PVF90 C 50F- M		12	10		6 ... 8

Pneumatic symbol

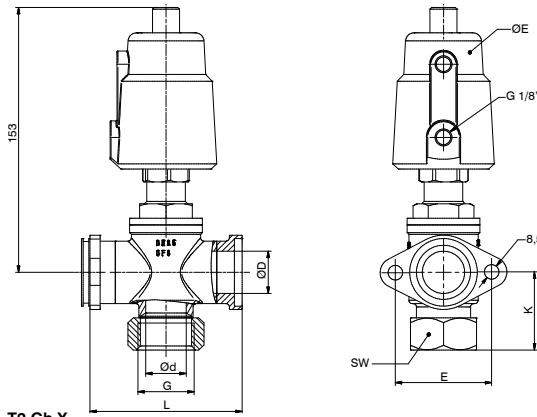


Construction characteristics	Technical characteristics (Valve body)	Technical characteristics (Actuator)
<ul style="list-style-type: none"> - High flow rate thanks to body configuration with inclined seating - Anti water hammer functioning with input below poppet - Pneumatically operated valve with stainless steel body, resistant to ambient corrosion - Self-levelling poppet to ensure improved sealing - Optical position indicator - Self-adjusting maintenance free stuffer seals package - Valves may be mounted in all positions <p>OPTIONS (on request):</p> <ul style="list-style-type: none"> - Double acting versions are available on request 	<ul style="list-style-type: none"> - Material: AISI 316/304 stainless steel - Fluid temperature: -10 °C ... +180 °C - Ambient temperature: -10 °C ... +80 °C - Fluid viscosity: max. 600cSt. - Poppet: PTFE - Seals package: PTFE and FKM - Fluid: dry or lubricated air, gases and neutral fluids, water and steam 	<ul style="list-style-type: none"> - Body: AISI 304 - Pilot fluid: dry or lubricated air, gas and neutral fluids - Fluid temperature: max. +60 °C

2 ways multi channel valve G1/2" - G1"



II 2G Ex h IIC T4..T2 Gb X
II 2D Ex h IIIC T130°C..T:230 Db X
-10°C ≤ Ta ≤ +80°C



Ordering code

PVF50VTT-M

VERSION

- V 1 = single acting normally closed
- 2 = double acting normally closed

ORIFICE SIZE (MM)

- T 15 = Ø15
- 25 = Ø25

MATERIAL

- M A = AISI 304
- B = AISI 316

Actuator Ø50

Table of dimensions

CODE	Actuator (mm)	G	K	L	ØD	Ød	SW	ØE
PVF50V15T-M	50	1/2"	35	76	25	18	27	50
PVF50V25T-M		1"	46	90	32	24	39	57

Technical data

CODE	KV (m³/h)	Max. working pressure (bar)		Pilot pressure (bar)	
		DE	SE	DE	SE
PVF50V15T-M	8,1	16	14	3 ... 5	4,5 ... 8
PVF50V25T-M	14,8	13	8	3 ... 7	4,5 ... 8

Pneumatic symbol



Construction characteristics

- Anti water hammer functioning with input below poppet
- Pneumatically operated valve with stainless steel body, resistant to ambient corrosion
- Self-levelling poppet to ensure improved sealing
- Optical position indicator
- Self-adjusting maintenance free stuffer seals package
- Valves may be mounted in all positions

OPTIONS (on request):

- Double acting versions are available on request

Technical characteristics (Valve body)

- Material: AISI 316/304 stainless steel
- Fluid temperature: -10 °C ... +180 °C
- Ambient temperature: -10 °C ... +80 °C
- Fluid viscosity: max. 600cSt.
- Poppet: PTFE
- Seals package: PTFE and FKM
- Fluid: dry or lubricated air, gases and neutral fluids, water and steam

Closed flange kit (A)



Kit includes:
Nr. 1 flange, 2 Screw, 2 Nuts, 2 Washers (AISI 304)
Nr. 1 OR (EPDM)

Ordering code

PVFT-0001

SIZE
T 15 = Ø15
25 = Ø25

Closed flange kit (B)



Kit includes:
Nr. 1 flange, 2 Screw, 2 Nuts, 2 Washers (AISI 304)
Nr. 1 OR (EPDM)

Ordering code

PVFT-0003

SIZE
T 15 = Ø15
25 = Ø25

Open flange kit (A)



Kit includes:
Nr. 1 flange, 2 Screw, 2 Nuts, 2 Washers (AISI 304)
Nr. 1 OR (EPDM)

Ordering code

PVFT-0002

SIZE
T 15 = Ø15
25 = Ø25

Open flange kit (B)



Kit includes:
Nr. 1 flange, 2 Screw, 2 Nuts, 2 Washers (AISI 304)
Nr. 1 OR (EPDM)

Ordering code

PVFT-0004

SIZE
T 15 = Ø15
25 = Ø25

Valve joint kit (C)

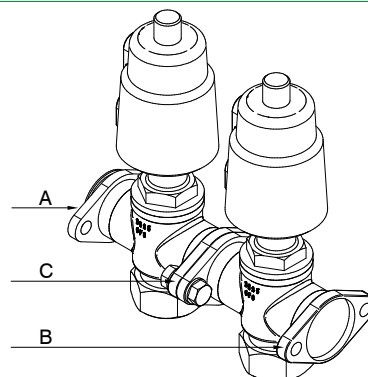


Kit includes:
Nr. 2 Screw, 2 Nuts, 2 Washers (AISI 304)
Nr. 1 OR (EPDM)

Ordering code

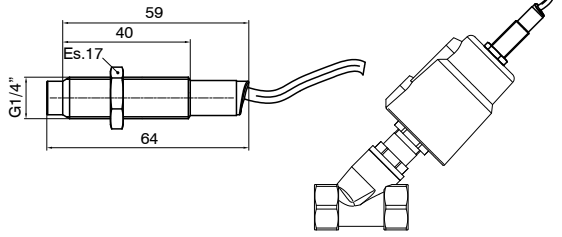
PVFT-0005

SIZE
T 15 = Ø15
25 = Ø25





► Proximity sensor



Ordering code	
PVF.1.S	
OUTPUT TYPE	
01 = NPN (N.C.)	
1 02 = NPN (N.O.)	
03 = PNP (N.C.)	
04 = PNP (N.O.)	

Nickel brass sensor, usable on valves up to size 2 inches for detection ON - OFF
Cable: 2 m
OPTIONS (on request):
A reduction is available for sizes 2 1/2" and 3".

Operational characteristics					
Maximum current (mA)	Voltage field (VDC)	Temperature (°C)	Detection distance	IP Rating	Weight (g)
100	10 ... 30	-10 ... +70	3 mm (max) ±10%	IP67	69